

Light-duty wheels and castors

1



Selection tool

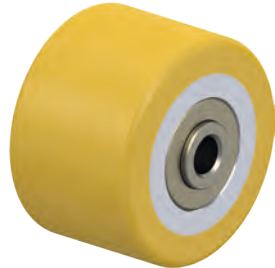
Light-duty wheels and castors

1



| Series | TPA | VPA | POES |
|--|---|--------------|---|
| Tread / tyre | Thermoplastic rubber-elastomer (TPE) | Solid rubber | Elastic solid rubber "Blickle SoftMotion" |
| Tread and tyre hardness | 85 Shore A | 80 Shore A | 55 Shore A |
| Non-marking | ✓ | ✓ | ✓ |
| Electrical conductivity | optional | optional | – |
| Wheel centre / rim | polypropylene | nylon | nylon |
| Wheel Ø | 50–125 mm | 50–150 mm | 100–125 mm |
| Load capacity up to | 125 kg | 130 kg | 150 kg |
| Rolling resistance | ■ ■ ■ ■ ■ □ | ■ ■ ■ □ □ □ | ■ ■ ■ ■ ■ □ |
| Smooth operation and floor preservation | ■ ■ ■ □ □ □ | ■ ■ ■ ■ ■ □ | ■ ■ ■ ■ ■ ■ |
| Non-staining | tread contains oil; alternative: VPA, POES, PATH | ✓ | ✓ |
| For a description of the wheel, refer to | page 122 | page 127 | page 133 |
| For information about swivel and fixed castors, refer to | page 123–126 | page 128–132 | page 134–135 |

■ ■ ■ ■ ■ excellent
 ■ ■ ■ ■ ■ very good
 ■ ■ ■ ■ good
 ■ ■ satisfactory
 ■ adequate
 ✓ yes – no



| PATH | VSTH | POA |
|----------------------------------|---|--------------|
| Thermoplastic polyurethane (TPU) | Polyurethane-elastomer Blickle Extrathane® | Nylon |
| 94 Shore A | 92 Shore A | 70 Shore D |
| ✓ | ✓ | ✓ |
| optional | – | – |
| nylon | steel | nylon |
| 50–125 mm | 35–50 mm | 35–150 mm |
| 250 kg | 150 kg | 280 kg |
| ■ ■ ■ ■ ■ □ | ■ ■ ■ ■ ■ □ | ■ ■ ■ ■ ■ ■ |
| ■ ■ ■ ■ □ □ | ■ ■ ■ ■ □ □ | ■ ■ □ □ □ □ |
| ✓ | ✓ | ✓ |
| page 136 | page 286 | page 143 |
| page 137–140 | page 141–142 | page 144–147 |

TPA series

Wheels with thermoplastic rubber tread, with polypropylene wheel centre



50–125 kg

Tread and tyre hardness

85 Shore A

Smooth operation / floor preservation

good

Rolling resistance

very good

Wear resistance

satisfactory

Tread:

- high-quality thermoplastic rubber-elastomer (TPE), hardness 85 Shore A
- low rolling and swivel resistance
- colour grey, non-marking
- chemically-bonded inseparable connection with the wheel centre

Wheel centre:

- high-quality polypropylene, impact resistant
- colour silver grey ("ELS" version colour black)

Other features:

- KF version: with synthetic thread guard, large
- very high chemical resistance to many aggressive substances
- operating temperature: -20 °C to +60 °C, reduced load capacity over +30 °C
- tread contains oil, may stain sensitive surfaces. alternatives: Series VPA, POES, PATH

Additional details:

- wheel series: page 60
- tread: page 52
- bearing types: page 84–85
- chemical resistance: page 51

| Wheels | Wheel Ø | Wheel width | Load capacity | Bearing type | Axle bore Ø | Hub length |
|-------------|----------|-------------|---------------|------------------|-------------|------------|
| | (D) [mm] | (T2) [mm] | [kg] | | (d) [mm] | (T1) [mm] |
| TPA 50/8G | 50 | 19 | 50 | plain bore | 8 | 22 |
| TPA 50/6KF | 50 | 19 | 50 | ball bearing (C) | 6 | 23 |
| TPA 75/8G | 75 | 25 | 75 | plain bore | 8 | 29.5 |
| TPA 75/6KF | 75 | 25 | 75 | ball bearing (C) | 6 | 31 |
| TPA 80/12G | 80 | 32 | 100 | plain bore | 12 | 35 |
| TPA 80/8KF | 80 | 32 | 100 | ball bearing (C) | 8 | 36 |
| TPA 100/8G | 100 | 25 | 90 | plain bore | 8 | 29.5 |
| TPA 101/12G | 100 | 32 | 110 | plain bore | 12 | 35 |
| TPA 101/8KF | 100 | 32 | 110 | ball bearing (C) | 8 | 36 |
| TPA 126/12G | 125 | 32 | 125 | plain bore | 12 | 35 |
| TPA 126/8KF | 125 | 32 | 125 | ball bearing (C) | 8 | 36 |

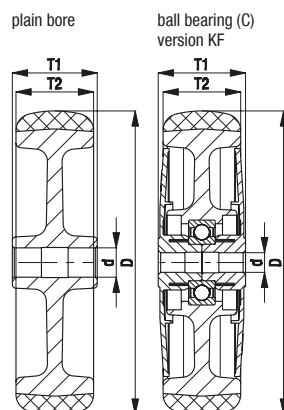
For other dimensions, see page 186

Versions / options



| | plain bore version | electrically conductive version, non-marking grey | large thread guard with additional ball bearing seals |
|----------------------------|--------------------|---|---|
| Technical description page | | 50 | 85 |
| Product code suffix | | -ELS | -KFD |
| Available for | | all* | all ball bearing versions |

* Wheel load capacity of electrically conductive version reduced by 35%



LRA-TPA, BRA-TPA, LKRA-TPA, BKRA-TPA series

Light duty castors with bolt hole,
wheel with thermoplastic
rubber tread

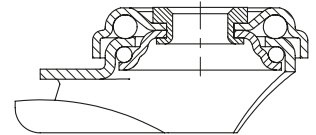
50–120 kg



- Bracket:** LRA/BRA, LKRA/BKRA series
- pressed steel, zinc-plated, blue-passivated, Cr6-free
- Swivel bracket:**
- double ball bearing in the swivel head
 - strong central kingpin
 - minimum swivel head play and smooth rolling characteristic and increased service life due to the special dynamic Blickle riveting process
 - synthetic "stop-fix" brake lever for series LRA, steel brake lever for series LKRA

- Wheel:** TPA series
- tread: high-quality thermoplastic rubber-elastomer (TPE), hardness 85 Shore A, colour grey, non-marking, oil containing
 - wheel centre: high-quality polypropylene, impact resistant, colour silver grey ("ELS" version colour black)

- Additional details:**
- bracket series: page 86
 - brakes: page 112–113
 - wheel series: page 122
 - bearing types: page 84–85



| Swivel castors | Fixed castors | Swivel castors with "stop-fix" brake | Wheel Ø [mm] | Wheel width [mm] | Load capacity [kg] | Bearing type | Total height [mm] | Plate Ø [mm] | Bolt hole Ø [mm] | Offset swivel castor [mm] |
|-------------------|----------------|--------------------------------------|--------------|------------------|--------------------|------------------|-------------------|--------------|------------------|---------------------------|
| LRA-TPA 50G | BRA-TPA 50G | LRA-TPA 50G-FI * | 50 | 19 | 50 | plain bore | 69 | 43 | 11 | 23 |
| LRA-TPA 50KF | BRA-TPA 50KF | LRA-TPA 50KF-FI * | 50 | 19 | 50 | ball bearing (C) | 69 | 43 | 11 | 23 |
| LRA-TPA 75G | BRA-TPA 75G | LRA-TPA 75G-FI * | 75 | 25 | 75 | plain bore | 98 | 43 | 11 | 29 |
| LRA-TPA 75KF | BRA-TPA 75KF | LRA-TPA 75KF-FI * | 75 | 25 | 75 | ball bearing (C) | 98 | 43 | 11 | 29 |
| LKRA-TPA 80G | BKRA-TPA 80G | LKRA-TPA 80G-FI | 80 | 32 | 100 | plain bore | 108 | 57 | 13 | 40 |
| LKRA-TPA 80G-11 | | LKRA-TPA 80G-11-FI | 80 | 32 | 100 | plain bore | 108 | 57 | 11 | 40 |
| LKRA-TPA 80KF | BKRA-TPA 80KF | LKRA-TPA 80KF-FI | 80 | 32 | 100 | ball bearing (C) | 108 | 57 | 13 | 40 |
| LKRA-TPA 80KF-11 | | LKRA-TPA 80KF-11-FI | 80 | 32 | 100 | ball bearing (C) | 108 | 57 | 11 | 40 |
| LRA-TPA 100G | | LRA-TPA 100G-FI * | 100 | 25 | 70 | plain bore | 121 | 43 | 11 | 33 |
| LKRA-TPA 101G | BKRA-TPA 101G | LKRA-TPA 101G-FI | 100 | 32 | 110 | plain bore | 133 | 57 | 13 | 40 |
| LKRA-TPA 101G-11 | | LKRA-TPA 101G-11-FI | 100 | 32 | 110 | plain bore | 133 | 57 | 11 | 40 |
| LKRA-TPA 101KF | BKRA-TPA 101KF | LKRA-TPA 101KF-FI | 100 | 32 | 110 | ball bearing (C) | 133 | 57 | 13 | 40 |
| LKRA-TPA 101KF-11 | | LKRA-TPA 101KF-11-FI | 100 | 32 | 110 | ball bearing (C) | 133 | 57 | 11 | 40 |
| LKRA-TPA 126G | BKRA-TPA 126G | LKRA-TPA 126G-FI | 125 | 32 | 120 | plain bore | 158 | 57 | 13 | 40 |
| LKRA-TPA 126G-11 | | LKRA-TPA 126G-11-FI | 125 | 32 | 120 | plain bore | 158 | 57 | 11 | 40 |
| LKRA-TPA 126KF | BKRA-TPA 126KF | LKRA-TPA 126KF-FI | 125 | 32 | 120 | ball bearing (C) | 158 | 57 | 13 | 40 |
| LKRA-TPA 126KF-11 | | LKRA-TPA 126KF-11-FI | 125 | 32 | 120 | ball bearing (C) | 158 | 57 | 11 | 40 |

* Synthetic brake lever, see image below

For stainless steel versions, see page 390

Versions / options**



| | plain bore version | with synthetic brake lever | electrically conductive version, non-marking grey | with threaded pin M10 x 30 M12 x 30 | with plug-in pin Ø 11 x 30.5 | with synthetic expander fitting | with metal expander fitting |
|----------------------------|--------------------|------------------------------|---|---|-------------------------------|--|---------------------------------------|
| Technical description page | | | 50 | 104 | 105 | 105 | 105 |
| Product code suffix | | | -ELS | -GS10 / -GS12 | -ES | see page 148 | see page 148 |
| Available for | | series LRA...-FI as standard | all*** | -GS10: series LRA -GS12: series LKRA | series LRA swivel castors**** | swivel castors with bolt hole Ø 11 mm (except ELS) | swivel castors with bolt hole Ø 11 mm |

** Other versions / options: buffers AG / ARG series see page 148 (page 116 for technical information)

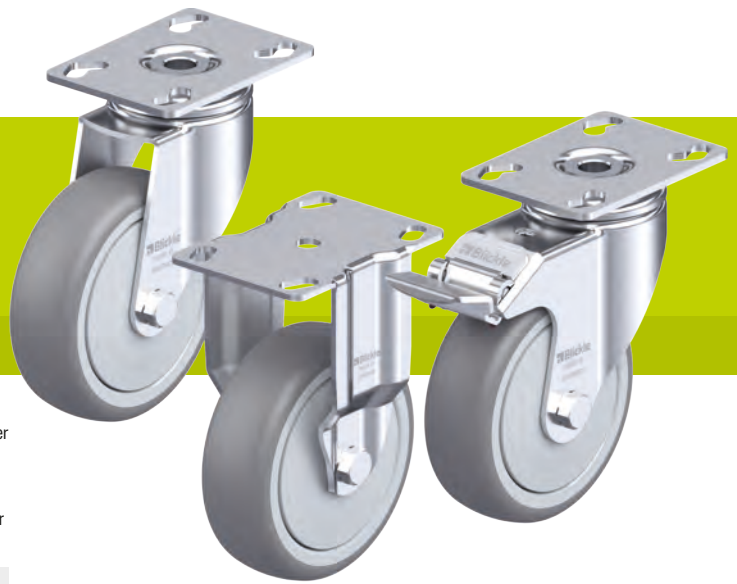
*** Wheel load capacity of electrically conductive version reduced by 35%

**** Synthetic castor socket for round tubes see page 148

LPA-TPA, BPA-TPA, LKPA-TPA, BKPA-TPA series

Light duty castors with top plate,
wheel with thermoplastic
rubber tread

50–120 kg



Bracket: LPA/BPA, LKPA/BKPA series

- pressed steel, zinc-plated, blue-passivated, Cr6-free

Swivel bracket:

- double ball bearing in the swivel head
- strong central kingpin
- minimum swivel head play and smooth rolling characteristic and increased service life due to the special dynamic Blickle riveting process
- synthetic "stop-fix" brake lever for series LPA, steel brake lever for series LKPA

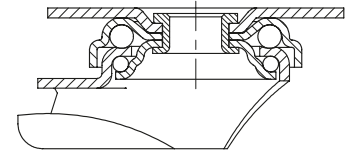
Wheel: TPA series

- tread: high-quality thermoplastic rubber-elastomer (TPE), hardness 85 Shore A, colour grey, non-marking, oil containing
- wheel centre: high-quality polypropylene, impact resistant, colour silver grey ("ELS" version colour black)

Additional details:

- bracket series: page 86
- brakes: page 112–113
- wheel series: page 122
- bearing types: page 84–85

1



| Swivel castors | Fixed castors | Swivel castors with "stop-fix" brake | Wheel Ø [mm] | Wheel width [mm] | Load capacity [kg] | Bearing type | Total height [mm] | Plate size [mm] | Bolt hole spacing [mm] | Bolt hole Ø [mm] | Offset swivel castor [mm] |
|----------------|----------------|--------------------------------------|--------------|------------------|--------------------|------------------|-------------------|-----------------|------------------------|------------------|---------------------------|
| LPA-TPA 50G | BPA-TPA 50G | LPA-TPA 50G-FI * | 50 | 19 | 50 | plain bore | 71 | 60 x 60 | 38 x 38 / 48 x 48 | 6.2 | 23 |
| LPA-TPA 50KF | BPA-TPA 50KF | LPA-TPA 50KF-FI * | 50 | 19 | 50 | ball bearing (C) | 71 | 60 x 60 | 38 x 38 / 48 x 48 | 6.2 | 23 |
| LPA-TPA 75G | BPA-TPA 75G | LPA-TPA 75G-FI * | 75 | 25 | 75 | plain bore | 100 | 60 x 60 | 38 x 38 / 48 x 48 | 6.2 | 29 |
| LPA-TPA 75KF | BPA-TPA 75KF | LPA-TPA 75KF-FI * | 75 | 25 | 75 | ball bearing (C) | 100 | 60 x 60 | 38 x 38 / 48 x 48 | 6.2 | 29 |
| LKPA-TPA 80G | BKPA-TPA 80G | LKPA-TPA 80G-FI | 80 | 32 | 100 | plain bore | 111 | 90 x 66 | 75 x 45 / 61 x 51 | 8.5 | 40 |
| LKPA-TPA 80KF | BKPA-TPA 80KF | LKPA-TPA 80KF-FI | 80 | 32 | 100 | ball bearing (C) | 111 | 90 x 66 | 75 x 45 / 61 x 51 | 8.5 | 40 |
| LPA-TPA 100G | | LPA-TPA 100G-FI * | 100 | 25 | 70 | plain bore | 123 | 60 x 60 | 38 x 38 / 48 x 48 | 6.2 | 33 |
| LKPA-TPA 101G | BKPA-TPA 101G | LKPA-TPA 101G-FI | 100 | 32 | 110 | plain bore | 136 | 90 x 66 | 75 x 45 / 61 x 51 | 8.5 | 40 |
| LKPA-TPA 101KF | BKPA-TPA 101KF | LKPA-TPA 101KF-FI | 100 | 32 | 110 | ball bearing (C) | 136 | 90 x 66 | 75 x 45 / 61 x 51 | 8.5 | 40 |
| LKPA-TPA 126G | BKPA-TPA 126G | LKPA-TPA 126G-FI | 125 | 32 | 120 | plain bore | 161 | 90 x 66 | 75 x 45 / 61 x 51 | 8.5 | 40 |
| LKPA-TPA 126KF | BKPA-TPA 126KF | LKPA-TPA 126KF-FI | 125 | 32 | 120 | ball bearing (C) | 161 | 90 x 66 | 75 x 45 / 61 x 51 | 8.5 | 40 |

* Synthetic brake lever, see image below

For stainless steel versions, see page 391

Versions / options

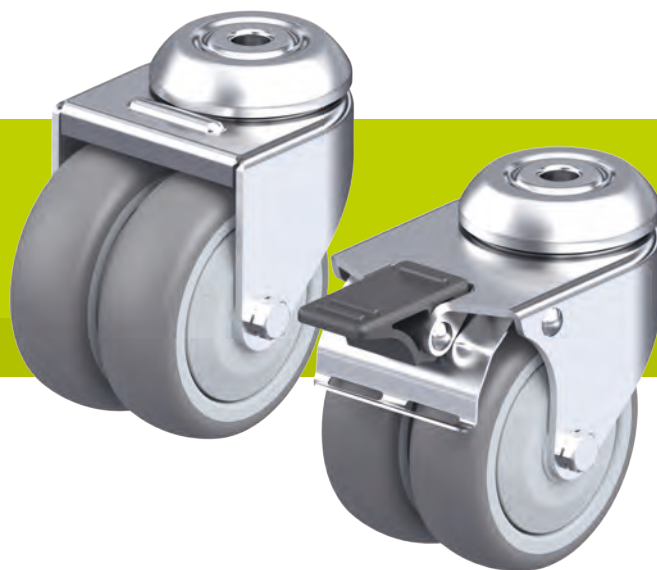


| | plain bore version | with synthetic brake lever | electrically conductive version, non-marking grey |
|----------------------------|--------------------|------------------------------|---|
| Technical description page | | | 50 |
| Product code suffix | | | -ELS |
| Available for | | series LPA...-FI as standard | all** |

** Wheel load capacity of electrically conductive version reduced by 35%

LMDA-TPA series

Twin wheel light duty castors with bolt hole, wheels with thermoplastic rubber tread



80–100 kg

Bracket: LMDA series

- pressed steel, zinc-plated, blue-passivated, Cr6-free
- double ball bearing in the swivel head
- pressed swivel head

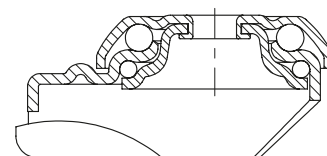
Wheel: TPA series

- tread: high-quality thermoplastic rubber-elastomer (TPE), hardness 85 Shore A, colour grey, non-marking, oil containing
- wheel centre: high-quality polypropylene, impact resistant, colour silver grey ("ELS" version colour black)

Additional details:

- bracket series: page 86
- brakes: page 112–113
- wheel series: page 122
- bearing types: page 84–85

1



| Swivel castors | Swivel castors with "stop-fix" brake | Wheel Ø [mm] | Wheel width [mm] | Load capacity [kg] | Bearing type | Total height [mm] | Plate Ø [mm] | Bolt hole Ø [mm] | Offset swivel castor [mm] |
|----------------|--------------------------------------|-----------------|---------------------|-----------------------|------------------|----------------------|-----------------|---------------------|------------------------------|
| LMDA-TPA 50G | LMDA-TPA 50G-FI | 50 | 2 x 19 | 80 | plain bore | 71 | 41 | 10.2 | 31 |
| LMDA-TPA 50KF | LMDA-TPA 50KF-FI | 50 | 2 x 19 | 80 | ball bearing (C) | 71 | 41 | 10.2 | 31 |
| LMDA-TPA 75G | LMDA-TPA 75G-FI | 75 | 2 x 25 | 100 | plain bore | 98 | 55 | 10.2 | 34 |
| LMDA-TPA 75KF | LMDA-TPA 75KF-FI | 75 | 2 x 25 | 100 | ball bearing (C) | 98 | 55 | 10.2 | 34 |

Versions / options



| | | |
|----------------------------|--------------------|---|
| | plain bore version | electrically conductive version, non-marking grey |
| Technical description page | | 50 |
| Product code suffix | | -ELS |
| Available for | | all* |

* Wheel load capacity of electrically conductive version reduced by 35%

LDA-TPA series

Twin wheel light duty castors with top plate, wheels with thermoplastic rubber tread

80–100 kg

Bracket: LDA series

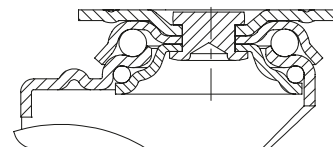
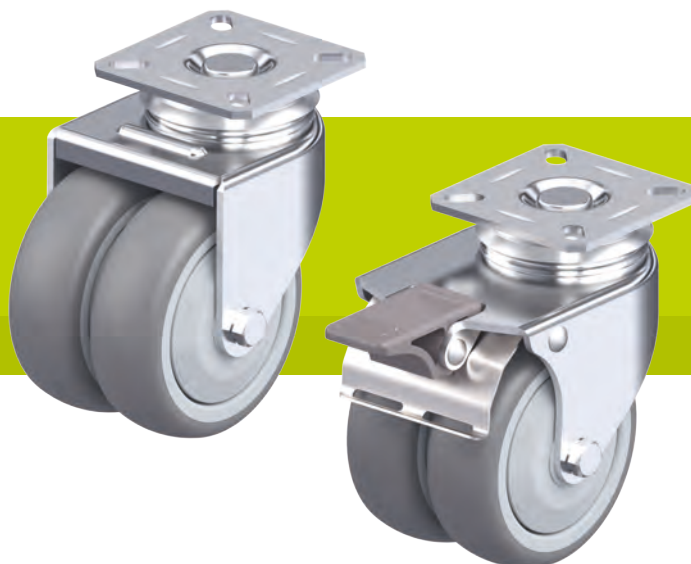
- pressed steel, zinc-plated, blue-passivated, Cr6-free
- double ball bearing in the swivel head
- pressed swivel head

Wheel: TPA series

- tread: high-quality thermoplastic rubber-elastomer (TPE), hardness 85 Shore A, colour grey, non-marking, oil containing
- wheel centre: high-quality polypropylene, impact resistant, colour silver grey ("ELS" version colour black)

Additional details:

- bracket series: page 86
- brakes: page 112–113
- wheel series: page 122
- bearing types: page 84–85



| Swivel castors | Swivel castors with "stop-fix" brake | Wheel Ø [mm] | Wheel width [mm] | Load capacity [kg] | Bearing type | Total height [mm] | Plate size [mm] | Bolt hole spacing [mm] | Bolt hole Ø [mm] | Offset swivel castor [mm] |
|----------------|--------------------------------------|-----------------|---------------------|-----------------------|------------------|----------------------|--------------------|---------------------------|---------------------|------------------------------|
| LDA-TPA 50G | LDA-TPA 50G-FI | 50 | 2 x 19 | 80 | plain bore | 71 | 60 x 60 | 38 x 38 / 48 x 48 | 6.2 | 31 |
| LDA-TPA 50KF | LDA-TPA 50KF-FI | 50 | 2 x 19 | 80 | ball bearing (C) | 71 | 60 x 60 | 38 x 38 / 48 x 48 | 6.2 | 31 |
| LDA-TPA 75G | LDA-TPA 75G-FI | 75 | 2 x 25 | 100 | plain bore | 101 | 60 x 60 | 40 x 40 / 46 x 46 | 6.2 | 34 |
| LDA-TPA 75KF | LDA-TPA 75KF-FI | 75 | 2 x 25 | 100 | ball bearing (C) | 101 | 60 x 60 | 40 x 40 / 46 x 46 | 6.2 | 34 |

Versions / options



| | | |
|----------------------------|--------------------|---|
| | plain bore version | electrically conductive version, non-marking grey |
| Technical description page | | 50 |
| Product code suffix | | -ELS |
| Available for | | all* |

* Wheel load capacity of electrically conductive version reduced by 35%

VPA series

Wheels with solid rubber tyre, with synthetic rim

40–130 kg

Tread and tyre hardness

80 Shore A

Smooth operation / floor preservation

very good

Rolling resistance

good

Wear resistance

sufficient

Tyre:

- high-quality solid rubber, hardness 80 Shore A
- very good operational comfort
- very good floor preservation, low-noise operation
- colour grey, non-marking, non-staining (electrically conductive version “-EL” colour black, marking)

Rim:

- high-quality nylon 6 or polypropylene in the version “-EL”, impact resistant
- colour black

Other features:

- high chemical resistance to many aggressive substances, except oils
- operating temperature: -20 °C to +60 °C, reduced load capacity over +30 °C

Additional details:

- wheel series: page 60
- tread: page 52
- bearing types: page 84–85
- chemical resistance: page 51



1

| Wheels | Wheel Ø | Tyre width | Load capacity | Bearing type | Axle bore Ø | Hub length |
|-------------|----------|------------|---------------|--------------|-------------|------------|
| | (D) [mm] | (T2) [mm] | [kg] | | (d) [mm] | (T1) [mm] |
| VPA 50/6G | 50 | 18 | 40 | plain bore | 6 | 22 |
| VPA 50/8G | 50 | 18 | 40 | plain bore | 8 | 22 |
| VPA 50/6K | 50 | 18 | 40 | ball bearing | 6 | 22.5 |
| VPA 75/8G | 75 | 25 | 60 | plain bore | 8 | 29.5 |
| VPA 75/6K | 75 | 25 | 60 | ball bearing | 6 | 30 |
| VPA 80/12G | 80 | 25 | 80 | plain bore | 12 | 35 |
| VPA 80/8K | 80 | 25 | 80 | ball bearing | 8 | 35 |
| VPA 100/8G | 100 | 25 | 90 | plain bore | 8 | 29.5 |
| VPA 100/12G | 100 | 25 | 90 | plain bore | 12 | 29.5 |
| VPA 100/6K | 100 | 25 | 90 | ball bearing | 6 | 30 |
| VPA 101/12G | 100 | 32 | 110 | plain bore | 12 | 35 |
| VPA 101/8K | 100 | 32 | 110 | ball bearing | 8 | 35 |
| VPA 125/12G | 125 | 25 | 100 | plain bore | 12 | 35 |
| VPA 125/8K | 125 | 25 | 100 | ball bearing | 8 | 35 |
| VPA 126/12G | 125 | 32 | 125 | plain bore | 12 | 35 |
| VPA 126/8K | 125 | 32 | 125 | ball bearing | 8 | 35 |
| VPA 150/12G | 150 | 30 | 130 | plain bore | 12 | 35 |
| VPA 150/8K | 150 | 30 | 130 | ball bearing | 8 | 35 |

Versions / options



plain bore version

electrically conductive version, black tyre

Technical description page

50

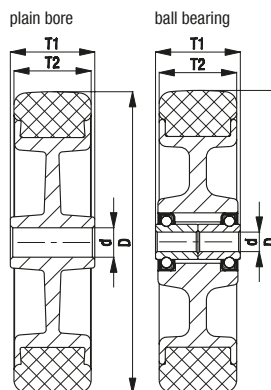
Product code suffix

-EL

Available for

all ball bearing versions*

* Wheel load capacity of electrically conductive version reduced by 25%



LRA, BRA, LKRA, BKRA-VPA series (wheel Ø 50–100 mm)

Light duty castors with bolt hole, wheel with solid rubber tyres



40–110 kg

Bracket: LRA/BRA, LKRA/BKRA series

- pressed steel, zinc-plated, blue-passivated, Cr6-free

Swivel bracket:

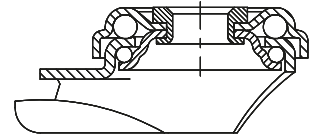
- double ball bearing in the swivel head
- strong central kingpin
- minimum swivel head play and smooth rolling characteristic and increased service life due to the special dynamic Blickle riveting process
- synthetic “stop-fix” brake lever for series LRA, steel brake lever for series LKRA

Wheel: VPA series

- tyre: high-quality solid rubber, hardness 80 Shore A, colour grey, non-marking, non-staining
- rim: high-quality nylon 6 or polypropylene in the electrically conductive version “-EL”, impact resistant, colour black

Additional details:

- bracket series: page 86
- brakes: page 112–113
- wheel series: page 127
- bearing types: page 84–85



| Swivel castors | Fixed castors | Swivel castors with “stop-fix” brake | Wheel Ø [mm] | Tyre width [mm] | Load capacity [kg] | Bearing type | Total height [mm] | Plate Ø [mm] | Bolt hole Ø [mm] | Offset swivel castor [mm] |
|------------------|---------------|--------------------------------------|-----------------|--------------------|-----------------------|--------------|----------------------|-----------------|---------------------|------------------------------|
| LRA-VPA 50G | BRA-VPA 50G | LRA-VPA 50G-FI * | 50 | 18 | 40 | plain bore | 69 | 43 | 11 | 23 |
| LRA-VPA 50K | BRA-VPA 50K | LRA-VPA 50K-FI * | 50 | 18 | 40 | ball bearing | 69 | 43 | 11 | 23 |
| LRA-VPA 75G | BRA-VPA 75G | LRA-VPA 75G-FI * | 75 | 25 | 60 | plain bore | 98 | 43 | 11 | 29 |
| LRA-VPA 75K | BRA-VPA 75K | LRA-VPA 75K-FI * | 75 | 25 | 60 | ball bearing | 98 | 43 | 11 | 29 |
| LKRA-VPA 80G | BKRA-VPA 80G | LKRA-VPA 80G-FI | 80 | 25 | 80 | plain bore | 108 | 57 | 13 | 40 |
| LKRA-VPA 80G-11 | | LKRA-VPA 80G-11-FI | 80 | 25 | 80 | plain bore | 108 | 57 | 11 | 40 |
| LKRA-VPA 80K | BKRA-VPA 80K | LKRA-VPA 80K-FI | 80 | 25 | 80 | ball bearing | 108 | 57 | 13 | 40 |
| LKRA-VPA 80K-11 | | LKRA-VPA 80K-11-FI | 80 | 25 | 80 | ball bearing | 108 | 57 | 11 | 40 |
| LRA-VPA 100G | | LRA-VPA 100G-FI * | 100 | 25 | 70 | plain bore | 121 | 43 | 11 | 33 |
| LRA-VPA 100K | | LRA-VPA 100K-FI * | 100 | 25 | 70 | ball bearing | 121 | 43 | 11 | 33 |
| LKRA-VPA 101G | BKRA-VPA 101G | LKRA-VPA 101G-FI | 100 | 32 | 110 | plain bore | 133 | 57 | 13 | 40 |
| LKRA-VPA 101G-11 | | LKRA-VPA 101G-11-FI | 100 | 32 | 110 | plain bore | 133 | 57 | 11 | 40 |
| LKRA-VPA 101K | BKRA-VPA 101K | LKRA-VPA 101K-FI | 100 | 32 | 110 | ball bearing | 133 | 57 | 13 | 40 |
| LKRA-VPA 101K-11 | | LKRA-VPA 101K-11-FI | 100 | 32 | 110 | ball bearing | 133 | 57 | 11 | 40 |

* Synthetic brake lever, see image below

For other wheel Ø, see next page, For stainless steel versions, see page 392

Versions / options**



| | with synthetic brake lever | electrically conductive version, black tyre | with threaded pin M10 x 30 M12 x 30 | with plug-in pin Ø 11 x 30.5 | with synthetic expander fitting | with metal expander fitting |
|----------------------------|------------------------------|---|---|-------------------------------|---|---------------------------------------|
| Technical description page | | 50 | 104 | 105 | 105 | 105 |
| Product code suffix | | -EL | -GS10 / -GS12 | -ES | see page 148 | see page 148 |
| Available for | series LRA...-FI as standard | all ball bearing versions*** | -GS10: series LRA -GS12: series LKRA | series LRA swivel castors**** | swivel castors with bolt hole Ø 11 mm (except EL) | swivel castors with bolt hole Ø 11 mm |

** Other versions / options: 1. buffers AG / ARG series see page 148 (page 116 for technical information) 2. pressed steel thread guard, zinc-plated (-FA), available for all with exception of ...50K (page 116 for technical information)

*** Wheel load capacity of electrically conductive version reduced by 25%

**** Synthetic castor socket for round tubes see page 148

LKRA-VPA, BKRA-VPA series (wheel Ø 125–150 mm)

Light duty castors with bolt hole, wheel with solid rubber tyres

100–120 kg

Bracket: LKRA/BKRA series

- pressed steel, zinc-plated, blue-passivated, Cr6-free

Swivel bracket:

- double ball bearing in the swivel head
- strong central kingpin
- minimum swivel head play and smooth rolling characteristic and increased service life due to the special dynamic Blickle riveting process

Wheel: VPA series

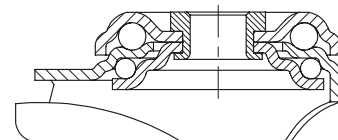
- tyre: high-quality solid rubber, hardness 80 Shore A, colour grey, non-marking, non-staining
- rim: high-quality nylon 6 or polypropylene in the electrically conductive version “-EL”, impact resistant, colour black

Additional details:

- bracket series: page 86
- brakes: page 112–113
- wheel series: page 127
- bearing types: page 84–85



1



| Swivel castors | Fixed castors | Swivel castors with “stop-fix” brake | Wheel Ø [mm] | Tyre width [mm] | Load capacity [kg] | Bearing type | Total height [mm] | Plate Ø [mm] | Bolt hole Ø [mm] | Offset swivel castor [mm] |
|------------------|---------------|--------------------------------------|-----------------|--------------------|-----------------------|--------------|----------------------|-----------------|---------------------|------------------------------|
| LKRA-VPA 125G | BKRA-VPA 125G | LKRA-VPA 125G-FI | 125 | 25 | 100 | plain bore | 158 | 57 | 13 | 40 |
| LKRA-VPA 125G-11 | | LKRA-VPA 125G-11-FI | 125 | 25 | 100 | plain bore | 158 | 57 | 11 | 40 |
| LKRA-VPA 125K | BKRA-VPA 125K | LKRA-VPA 125K-FI | 125 | 25 | 100 | ball bearing | 158 | 57 | 13 | 40 |
| LKRA-VPA 125K-11 | | LKRA-VPA 125K-11-FI | 125 | 25 | 100 | ball bearing | 158 | 57 | 11 | 40 |
| LKRA-VPA 126G | BKRA-VPA 126G | LKRA-VPA 126G-FI | 125 | 32 | 120 | plain bore | 158 | 57 | 13 | 40 |
| LKRA-VPA 126G-11 | | LKRA-VPA 126G-11-FI | 125 | 32 | 120 | plain bore | 158 | 57 | 11 | 40 |
| LKRA-VPA 126K | BKRA-VPA 126K | LKRA-VPA 126K-FI | 125 | 32 | 120 | ball bearing | 158 | 57 | 13 | 40 |
| LKRA-VPA 126K-11 | | LKRA-VPA 126K-11-FI | 125 | 32 | 120 | ball bearing | 158 | 57 | 11 | 40 |
| LKRA-VPA 150G | BKRA-VPA 150G | LKRA-VPA 150G-FI | 150 | 30 | 110 | plain bore | 182 | 57 | 13 | 40 |
| LKRA-VPA 150G-11 | | LKRA-VPA 150G-11-FI | 150 | 30 | 110 | plain bore | 182 | 57 | 11 | 40 |
| LKRA-VPA 150K | BKRA-VPA 150K | LKRA-VPA 150K-FI | 150 | 30 | 110 | ball bearing | 182 | 57 | 13 | 40 |
| LKRA-VPA 150K-11 | | LKRA-VPA 150K-11-FI | 150 | 30 | 110 | ball bearing | 182 | 57 | 11 | 40 |

For stainless steel versions, see page 392

Versions / options



| | electrically conductive version, black tyre | with thread guard, pressed steel, zinc-plated | with threaded pin M12 x 30 | with synthetic expander fitting | with metal expander fitting | buffers |
|----------------------------|---|---|---------------------------------------|---|---------------------------------------|------------------------|
| Technical description page | 50 | 116 | 104 | 105 | 105 | 116 |
| Product code suffix | -EL | -FA | -GS12 | see page 148 | see page 148 | AG / ARG series |
| Available for | all ball bearing versions* | all | swivel castors with bolt hole Ø 13 mm | swivel castors with bolt hole Ø 11 mm (except EL) | swivel castors with bolt hole Ø 11 mm | see page 148 |

* Wheel load capacity of electrically conductive version reduced by 25%

LPA-VPA, BPA-VPA, LKPA-VPA, BKPA-VPA series

Light duty castors with top plate, wheel with solid rubber tyres

40–120 kg



Bracket: LPA/BPA, LKPA/BKPA series

- pressed steel, zinc-plated, blue-passivated, Cr6-free

Swivel bracket:

- double ball bearing in the swivel head
- strong central kingpin
- minimum swivel head play and smooth rolling characteristic and increased service life due to the special dynamic Blickle riveting process
- synthetic “stop-fix” brake lever for series LPA, steel brake lever for series LKPA

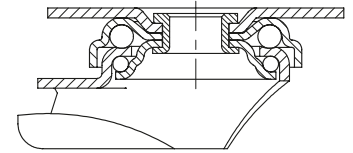
Wheel: VPA series

- tyre: high-quality solid rubber, hardness 80 Shore A, colour grey, non-marking, non-staining
- rim: high-quality nylon 6 or polypropylene in the electrically conductive version “-EL”, impact resistant, colour black

Additional details:

- bracket series: page 86
- brakes: page 112–113
- wheel series: page 127
- bearing types: page 84–85

1



| Swivel castors | Fixed castors | Swivel castors with “stop-fix” brake | Wheel Ø [mm] | Tyre width [mm] | Load capacity [kg] | Bearing type | Total height [mm] | Plate size [mm] | Bolt hole spacing [mm] | Bolt hole Ø [mm] | Offset swivel castor [mm] |
|----------------|---------------|--------------------------------------|--------------|-----------------|--------------------|--------------|-------------------|-----------------|------------------------|------------------|---------------------------|
| LPA-VPA 50G | BPA-VPA 50G | LPA-VPA 50G-FI * | 50 | 18 | 40 | plain bore | 71 | 60 x 60 | 38 x 38 / 48 x 48 | 6.2 | 23 |
| LPA-VPA 50K | BPA-VPA 50K | LPA-VPA 50K-FI * | 50 | 18 | 40 | ball bearing | 71 | 60 x 60 | 38 x 38 / 48 x 48 | 6.2 | 23 |
| LPA-VPA 75G | BPA-VPA 75G | LPA-VPA 75G-FI * | 75 | 25 | 60 | plain bore | 100 | 60 x 60 | 38 x 38 / 48 x 48 | 6.2 | 29 |
| LPA-VPA 75K | BPA-VPA 75K | LPA-VPA 75K-FI * | 75 | 25 | 60 | ball bearing | 100 | 60 x 60 | 38 x 38 / 48 x 48 | 6.2 | 29 |
| LKPA-VPA 80G | BKPA-VPA 80G | LKPA-VPA 80G-FI | 80 | 25 | 80 | plain bore | 111 | 90 x 66 | 75 x 45 / 61 x 51 | 8.5 | 40 |
| LKPA-VPA 80K | BKPA-VPA 80K | LKPA-VPA 80K-FI | 80 | 25 | 80 | ball bearing | 111 | 90 x 66 | 75 x 45 / 61 x 51 | 8.5 | 40 |
| LPA-VPA 100G | | LPA-VPA 100G-FI * | 100 | 25 | 70 | plain bore | 123 | 60 x 60 | 38 x 38 / 48 x 48 | 6.2 | 33 |
| LPA-VPA 100K | | LPA-VPA 100K-FI * | 100 | 25 | 70 | ball bearing | 123 | 60 x 60 | 38 x 38 / 48 x 48 | 6.2 | 33 |
| LKPA-VPA 101G | BKPA-VPA 101G | LKPA-VPA 101G-FI | 100 | 32 | 110 | plain bore | 136 | 90 x 66 | 75 x 45 / 61 x 51 | 8.5 | 40 |
| LKPA-VPA 101K | BKPA-VPA 101K | LKPA-VPA 101K-FI | 100 | 32 | 110 | ball bearing | 136 | 90 x 66 | 75 x 45 / 61 x 51 | 8.5 | 40 |
| LKPA-VPA 125G | BKPA-VPA 125G | LKPA-VPA 125G-FI | 125 | 25 | 100 | plain bore | 161 | 90 x 66 | 75 x 45 / 61 x 51 | 8.5 | 40 |
| LKPA-VPA 125K | BKPA-VPA 125K | LKPA-VPA 125K-FI | 125 | 25 | 100 | ball bearing | 161 | 90 x 66 | 75 x 45 / 61 x 51 | 8.5 | 40 |
| LKPA-VPA 126G | BKPA-VPA 126G | LKPA-VPA 126G-FI | 125 | 32 | 120 | plain bore | 161 | 90 x 66 | 75 x 45 / 61 x 51 | 8.5 | 40 |
| LKPA-VPA 126K | BKPA-VPA 126K | LKPA-VPA 126K-FI | 125 | 32 | 120 | ball bearing | 161 | 90 x 66 | 75 x 45 / 61 x 51 | 8.5 | 40 |
| LKPA-VPA 150G | BKPA-VPA 150G | LKPA-VPA 150G-FI | 150 | 30 | 110 | plain bore | 185 | 90 x 66 | 75 x 45 / 61 x 51 | 8.5 | 40 |
| LKPA-VPA 150K | BKPA-VPA 150K | LKPA-VPA 150K-FI | 150 | 30 | 110 | ball bearing | 185 | 90 x 66 | 75 x 45 / 61 x 51 | 8.5 | 40 |

* Synthetic brake lever, see image below

For stainless steel versions, see page 393

Versions / options



| | with synthetic brake lever | electrically conductive version, black tyre | with thread guard, pressed steel, zinc-plated |
|----------------------------|------------------------------|---|---|
| Technical description page | | 50 | 116 |
| Product code suffix | | -EL | -FA |
| Available for | series LPA...-FI as standard | all ball bearing versions** | all with exception of ...50K |

** Wheel load capacity of electrically conductive version reduced by 25%

LMDA-VPA series

Twin wheel light duty castors with bolt hole, wheels with solid rubber tyres

80–100 kg

Bracket: LMDA series

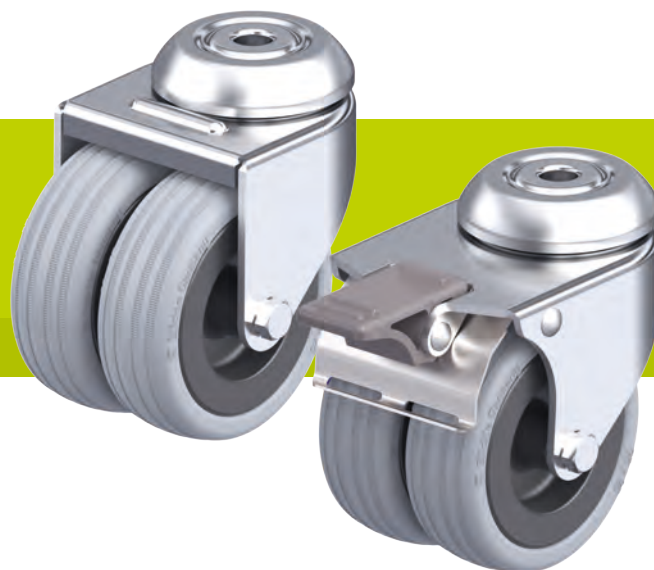
- pressed steel, zinc-plated, blue-passivated, Cr6-free
- double ball bearing in the swivel head
- pressed swivel head

Wheel: VPA series

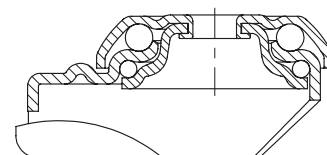
- tyre: high-quality solid rubber, hardness 80 Shore A, colour grey, non-marking, non-staining
- rim: high-quality nylon 6 or polypropylene in the electrically conductive version “-EL”, impact resistant, colour black

Additional details:

- bracket series: page 86
- brakes: page 112–113
- wheel series: page 127
- bearing types: page 84–85



1



| Swivel castors | Swivel castors with “stop-fix” brake | Wheel Ø [mm] | Wheel width [mm] | Load capacity [kg] | Bearing type | Total height [mm] | Plate Ø [mm] | Bolt hole Ø [mm] | Offset swivel castor [mm] |
|----------------|--------------------------------------|-----------------|---------------------|-----------------------|--------------|----------------------|-----------------|---------------------|------------------------------|
| LMDA-VPA 50G | LMDA-VPA 50G-FI | 50 | 2 x 18 | 80 | plain bore | 71 | 41 | 10.2 | 31 |
| LMDA-VPA 50K | LMDA-VPA 50K-FI | 50 | 2 x 18 | 80 | ball bearing | 71 | 41 | 10.2 | 31 |
| LMDA-VPA 75G | LMDA-VPA 75G-FI | 75 | 2 x 25 | 100 | plain bore | 98 | 55 | 10.2 | 34 |
| LMDA-VPA 75K | LMDA-VPA 75K-FI | 75 | 2 x 25 | 100 | ball bearing | 98 | 55 | 10.2 | 34 |

Versions / options



| | |
|---|----------------------------|
| electrically conductive version, black tyre | |
| Technical description page | 50 |
| Product code suffix | -EL |
| Available for | all ball bearing versions* |

* Wheel load capacity of electrically conductive version reduced by 25%

LDA-VPA series

Twin wheel light duty castors with top plate, wheels with solid rubber tyres

80–100 kg

Bracket: LDA series

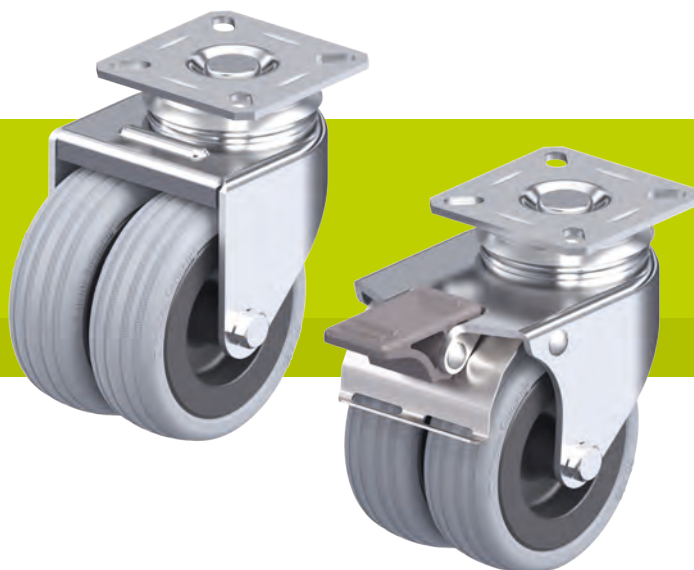
- pressed steel, zinc-plated, blue-passivated, Cr6-free
- double ball bearing in the swivel head
- pressed swivel head

Wheel: VPA series

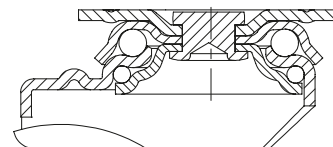
- tyre: high-quality solid rubber, hardness 80 Shore A, colour grey, non-marking, non-staining
- rim: high-quality nylon 6 or polypropylene in the electrically conductive version “-EL”, impact resistant, colour black

Additional details:

- bracket series: page 86
- brakes: page 112–113
- wheel series: page 127
- bearing types: page 84–85



1



| Swivel castors | Swivel castors with “stop-fix” brake | Wheel Ø [mm] | Tyre width [mm] | Load capacity [kg] | Bearing type | Total height [mm] | Plate size [mm] | Bolt hole spacing [mm] | Bolt hole Ø [mm] | Offset swivel castor [mm] |
|----------------|--------------------------------------|-----------------|--------------------|-----------------------|--------------|----------------------|--------------------|---------------------------|---------------------|------------------------------|
| LDA-VPA 50G | LDA-VPA 50G-FI | 50 | 2 x 18 | 80 | plain bore | 71 | 60 x 60 | 38 x 38 / 48 x 48 | 6.2 | 31 |
| LDA-VPA 50K | LDA-VPA 50K-FI | 50 | 2 x 18 | 80 | ball bearing | 71 | 60 x 60 | 38 x 38 / 48 x 48 | 6.2 | 31 |
| LDA-VPA 75G | LDA-VPA 75G-FI | 75 | 2 x 25 | 100 | plain bore | 101 | 60 x 60 | 40 x 40 / 46 x 46 | 6.2 | 34 |
| LDA-VPA 75K | LDA-VPA 75K-FI | 75 | 2 x 25 | 100 | ball bearing | 101 | 60 x 60 | 40 x 40 / 46 x 46 | 6.2 | 34 |

Versions / options



| | |
|---|----------------------------|
| electrically conductive version, black tyre | |
| Technical description page | 50 |
| Product code suffix | -EL |
| Available for | all ball bearing versions* |

* Wheel load capacity of electrically conductive version reduced by 25%

POES series

Wheels with “Blickle SoftMotion” soft rubber tyres, with nylon wheel centre

120–150 kg

Tread and tyre hardness

55 Shore A

Smooth operation / floor preservation

excellent

Rolling resistance

very good

Wear resistance

good



1

Tyre:

- high-quality elastic solid rubber “Blickle SoftMotion”, hardness 55 Shore A
- maximum operational comfort
- excellent floor preservation, particularly quiet operation
- low rolling resistance
- colour grey, non-marking
- vulcanised onto the wheel centre

Wheel centre:

- high-quality nylon 6, impact resistant
- colour black

Other features:

- KF version: with synthetic thread guard, large
- high chemical resistance to many aggressive substances, except oils
- operating temperature: -20 °C to +80 °C, temporarily up to +100 °C, reduced load capacity over +35 °C

Additional details:

- wheel series: page 60
- tread: page 53
- bearing types: page 84–85
- chemical resistance: page 51

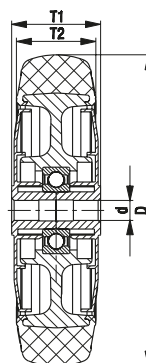
| Wheels | Wheel Ø | Wheel width | Load capacity | Bearing type | Axle bore Ø | Hub length |
|-----------------|----------|-------------|---------------|------------------|-------------|------------|
| | (D) [mm] | (T2) [mm] | | | (d) [mm] | (T1) [mm] |
| POES 102/8KF-SG | 100 | 32 | 120 | ball bearing (C) | 8 | 36 |
| POES 127/8KF-SG | 125 | 32 | 150 | ball bearing (C) | 8 | 36 |

For other dimensions, see page 209

Versions / options



| | large thread guard with additional ball bearing seals | with stainless steel ball bearing and thread guard |
|----------------------------|---|--|
| Technical description page | 85 | 85 |
| Product code suffix | -KFD | -XKF |
| Available for | upon request | all |



LKRA-POES, BKRA-POES series

Light duty castors with bolt hole,
wheel with soft rubber tyres
"Blickle SoftMotion"

120 kg

Bracket: LKRA/BKRA series

- pressed steel, zinc-plated, blue-passivated, Cr6-free

Swivel bracket:

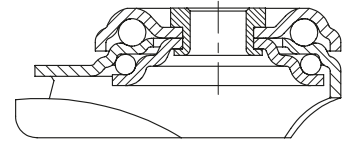
- double ball bearing in the swivel head
- strong central kingpin
- minimum swivel head play and smooth rolling characteristic and increased service life due to the special dynamic Blickle riveting process
- steel "stop-fix" brake lever

Wheel: POES series

- tyre: high-quality elastic solid rubber "Blickle SoftMotion", hardness 55 Shore A, colour grey, non-marking
- wheel centre: high-quality nylon 6, impact resistant, colour black

Additional details:

- bracket series: page 86
- brakes: page 112–113
- wheel series: page 133
- bearing types: page 84–85



| Swivel castors | Fixed castors | Swivel castors with "stop-fix" brake | Wheel Ø [mm] | Wheel width [mm] | Load capacity [kg] | Bearing type | Total height [mm] | Plate Ø [mm] | Bolt hole Ø [mm] | Offset swivel castor [mm] |
|-----------------------|--------------------|--------------------------------------|-----------------|---------------------|-----------------------|------------------|----------------------|-----------------|---------------------|------------------------------|
| LKRA-POES 102KF-SG | BKRA-POES 102KF-SG | LKRA-POES 102KF-FI-SG | 100 | 32 | 120 | ball bearing (C) | 133 | 57 | 13 | 40 |
| LKRA-POES 102KF-11-SG | | LKRA-POES 102KF-11-FI-SG | 100 | 32 | 120 | ball bearing (C) | 133 | 57 | 11 | 40 |
| LKRA-POES 127KF-SG | BKRA-POES 127KF-SG | LKRA-POES 127KF-FI-SG | 125 | 32 | 120 | ball bearing (C) | 158 | 57 | 13 | 40 |
| LKRA-POES 127KF-11-SG | | LKRA-POES 127KF-11-FI-SG | 125 | 32 | 120 | ball bearing (C) | 158 | 57 | 11 | 40 |

Versions / options



| | with threaded pin M12 x 30 | with synthetic expander fitting | with metal expander fitting |
|----------------------------|--|--|--|
| Technical description page | 104 | 105 | 105 |
| Product code suffix | -GS12 | see page 148 | see page 148 |
| Available for | swivel castors with bolt hole Ø 13 mm | swivel castors with bolt hole Ø 11 mm | swivel castors with bolt hole Ø 11 mm |

LKPA-POES, BKPA-POES series

Light duty castors with top plate,
wheel with soft rubber tyres
"Blickle SoftMotion"

120 kg

Bracket: LKPA/BKPA series

- pressed steel, zinc-plated, blue-passivated, Cr6-free

Swivel bracket:

- double ball bearing in the swivel head
- minimum swivel head play and smooth rolling characteristic and increased service life due to the special dynamic Blickle riveting process
- steel "stop-fix" brake lever

Wheel: POES series

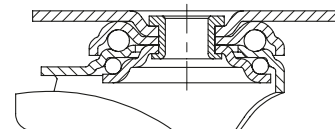
- tyre: high-quality elastic solid rubber "Blickle SoftMotion", hardness 55 Shore A, colour grey, non-marking
- wheel centre: high-quality nylon 6, impact resistant, colour black

Additional details:

- bracket series: page 86
- brakes: page 112–113
- wheel series: page 133
- bearing types: page 84–85



1



| Swivel castors | Fixed castors | Swivel castors with "stop-fix" brake | Wheel Ø [mm] | Wheel width [mm] | Load capacity [kg] | Bearing type | Total height [mm] | Plate size [mm] | Bolt hole spacing [mm] | Bolt hole Ø [mm] | Offset swivel castor [mm] |
|--------------------|--------------------|--------------------------------------|-----------------|---------------------|-----------------------|------------------|----------------------|--------------------|---------------------------|---------------------|------------------------------|
| LKPA-POES 102KF-SG | BKPA-POES 102KF-SG | LKPA-POES 102KF-FI-SG | 100 | 32 | 120 | ball bearing (C) | 136 | 90 x 66 | 75 x 45 / 61 x 51 | 8.5 | 40 |
| LKPA-POES 127KF-SG | BKPA-POES 127KF-SG | LKPA-POES 127KF-FI-SG | 125 | 32 | 120 | ball bearing (C) | 161 | 90 x 66 | 75 x 45 / 61 x 51 | 8.5 | 40 |

PATH series

Wheels with thermoplastic polyurethane tread,
with nylon wheel centre



75–250 kg

Tread and tyre hardness

94 Shore A

Smooth operation / floor preservation

good

Rolling resistance

very good

Wear resistance

very good

1

Tread:

- high-quality thermoplastic polyurethane (TPU), hardness 94 Shore A
- low rolling and swivel resistance
- high abrasion resistance
- colour dark grey, non-marking, non-staining
- chemically-bonded inseparable connection with the wheel centre

Wheel centre:

- high-quality nylon 6, impact resistant
- colour silver grey

Other features:

- KF version: with synthetic thread guard, large
- very high chemical resistance to many aggressive substances
- operating temperature: -20 °C to +70 °C, temporarily up to +90 °C, reduced load capacity over +35 °C

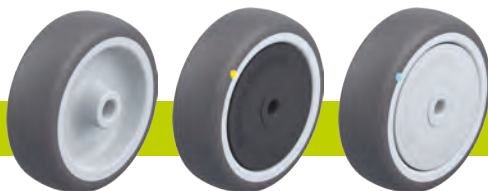
Additional details:

- wheel series: page 61
- tread: page 55
- bearing types: page 84–85
- chemical resistance: page 51

| Wheels | Wheel Ø (D) [mm] | Wheel width (T2) [mm] | Load capacity [kg] | Bearing type | Axle bore Ø (d) [mm] | Hub length (T1) [mm] |
|--------------|---------------------|--------------------------|-----------------------|------------------|-------------------------|-------------------------|
| PATH 50/8G | 50 | 19 | 75 | plain bore | 8 | 22 |
| PATH 50/6KF | 50 | 19 | 75 | ball bearing (C) | 6 | 23 |
| PATH 75/8G | 75 | 25 | 100 | plain bore | 8 | 29.5 |
| PATH 75/6KF | 75 | 25 | 100 | ball bearing (C) | 6 | 31 |
| PATH 80/12G | 80 | 32 | 150 | plain bore | 12 | 35 |
| PATH 80/8KF | 80 | 32 | 150 | ball bearing (C) | 8 | 36 |
| PATH 101/12G | 100 | 32 | 200 | plain bore | 12 | 35 |
| PATH 101/8KF | 100 | 32 | 200 | ball bearing (C) | 8 | 36 |
| PATH 126/12G | 125 | 32 | 250 | plain bore | 12 | 35 |
| PATH 126/8KF | 125 | 32 | 250 | ball bearing (C) | 8 | 36 |

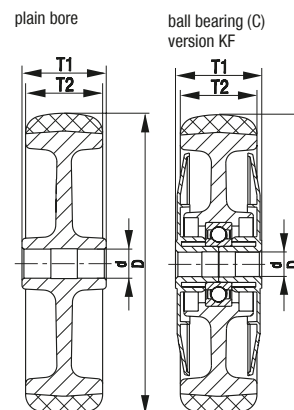
For other dimensions, see page 258

Versions / options



| | plain bore version | electrically conductive version, non-marking grey | large thread guard with additional ball bearing seals |
|----------------------------|--------------------|---|---|
| Technical description page | | 50 | 85 |
| Product code suffix | | -ELS | -KFD |
| Available for | | all ball bearing versions* | ball bearing versions |

* Wheel load capacity of electrically conductive version reduced by 35%



LRA-PATH, BRA-PATH, LKRA-PATH, BKRA-PATH series

Light duty castors with bolt hole,
wheel with thermoplastic
polyurethane tread

75–120 kg

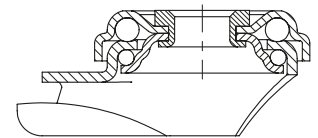


- Bracket:** LRA/BRA, LKRA/BKRA series
- pressed steel, zinc-plated, blue-passivated, Cr6-free
- Swivel bracket:**
- double ball bearing in the swivel head
 - strong central kingpin
 - minimum swivel head play and smooth rolling characteristic and increased service life due to the special dynamic Blickle riveting process
 - synthetic “stop-fix” brake lever for series LRA, steel brake lever for series LKRA

- Wheel:** PATH series
- tread: high-quality thermoplastic polyurethane (TPU), hardness 94 Shore A, colour dark grey, non-marking, non-staining
 - wheel centre: high-quality nylon 6, impact resistant, colour silver grey

- Additional details:**
- bracket series: page 86
 - brakes: page 112–113
 - wheel series: page 136
 - bearing types: page 84–85

1



| Swivel castors | Fixed castors | Swivel castors with “stop-fix” brake | Wheel Ø [mm] | Wheel width [mm] | Load capacity [kg] | Bearing type | Total height [mm] | Plate Ø [mm] | Bolt hole Ø [mm] | Offset swivel castor [mm] |
|--------------------|-----------------|--------------------------------------|-----------------|---------------------|-----------------------|------------------|----------------------|-----------------|---------------------|------------------------------|
| LRA-PATH 50G | BRA-PATH 50G | LRA-PATH 50G-FI * | 50 | 19 | 75 | plain bore | 69 | 43 | 11 | 23 |
| LRA-PATH 50KF | BRA-PATH 50KF | LRA-PATH 50KF-FI * | 50 | 19 | 75 | ball bearing (C) | 69 | 43 | 11 | 23 |
| LRA-PATH 75G | BRA-PATH 75G | LRA-PATH 75G-FI * | 75 | 25 | 75 | plain bore | 98 | 43 | 11 | 29 |
| LRA-PATH 75KF | BRA-PATH 75KF | LRA-PATH 75KF-FI * | 75 | 25 | 75 | ball bearing (C) | 98 | 43 | 11 | 29 |
| LKRA-PATH 80G | BKRA-PATH 80G | LKRA-PATH 80G-FI | 80 | 32 | 120 | plain bore | 108 | 57 | 13 | 40 |
| LKRA-PATH 80G-11 | | LKRA-PATH 80G-11-FI | 80 | 32 | 120 | plain bore | 108 | 57 | 11 | 40 |
| LKRA-PATH 80KF | BKRA-PATH 80KF | LKRA-PATH 80KF-FI | 80 | 32 | 120 | ball bearing (C) | 108 | 57 | 13 | 40 |
| LKRA-PATH 80KF-11 | | LKRA-PATH 80KF-11-FI | 80 | 32 | 120 | ball bearing (C) | 108 | 57 | 11 | 40 |
| LKRA-PATH 101G | BKRA-PATH 101G | LKRA-PATH 101G-FI | 100 | 32 | 120 | plain bore | 133 | 57 | 13 | 40 |
| LKRA-PATH 101G-11 | | LKRA-PATH 101G-11-FI | 100 | 32 | 120 | plain bore | 133 | 57 | 11 | 40 |
| LKRA-PATH 101KF | BKRA-PATH 101KF | LKRA-PATH 101KF-FI | 100 | 32 | 120 | ball bearing (C) | 133 | 57 | 13 | 40 |
| LKRA-PATH 101KF-11 | | LKRA-PATH 101KF-11-FI | 100 | 32 | 120 | ball bearing (C) | 133 | 57 | 11 | 40 |
| LKRA-PATH 126G | BKRA-PATH 126G | LKRA-PATH 126G-FI | 125 | 32 | 120 | plain bore | 158 | 57 | 13 | 40 |
| LKRA-PATH 126G-11 | | LKRA-PATH 126G-11-FI | 125 | 32 | 120 | plain bore | 158 | 57 | 11 | 40 |
| LKRA-PATH 126KF | BKRA-PATH 126KF | LKRA-PATH 126KF-FI | 125 | 32 | 120 | ball bearing (C) | 158 | 57 | 13 | 40 |
| LKRA-PATH 126KF-11 | | LKRA-PATH 126KF-11-FI | 125 | 32 | 120 | ball bearing (C) | 158 | 57 | 11 | 40 |

* Synthetic brake lever, see image below

For stainless steel versions, see page 394

Versions / options**



| | plain bore version | with synthetic brake lever | electrically conductive version, non-marking grey | with threaded pin M10 x 30 M12 x 30 | with plug-in pin Ø 11 x 30.5 | with synthetic expander fitting | with metal expander fitting |
|----------------------------|--------------------|------------------------------|---|---|-------------------------------|--|---------------------------------------|
| Technical description page | | | 50 | 104 | 105 | 105 | 105 |
| Product code suffix | | | -ELS | -GS10 / -GS12 | -ES | see page 148 | see page 148 |
| Available for | | series LRA...-FI as standard | all ball bearing versions*** | -GS10: series LRA -GS12: series LKRA | series LRA swivel castors**** | swivel castors with bolt hole Ø 11 mm (except ELS) | swivel castors with bolt hole Ø 11 mm |

** Other versions / options: 1. bracket in special colours (electrostatic powder coating), available upon request 2. buffers AG / ARG series see page 148 (page 116 for technical information)

*** Wheel load capacity of electrically conductive version reduced by 35%

**** Synthetic castor socket for round tubes see page 148

LPA-PATH, BPA-PATH, LKPA-PATH, BKPA-PATH series

Light duty castors with top plate,
wheel with thermoplastic
polyurethane tread



75–120 kg

Bracket: LPA/BPA, LKPA/BKPA series

- pressed steel, zinc-plated, blue-passivated, Cr6-free

Swivel bracket:

- double ball bearing in the swivel head
- strong central kingpin
- minimum swivel head play and smooth rolling characteristic and increased service life due to the special dynamic Blickle riveting process
- synthetic “stop-fix” brake lever for series LPA, steel brake lever for series LKPA

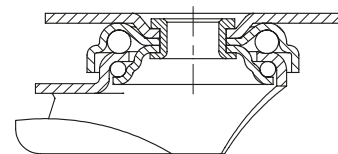
Wheel: PATH series

- tread: high-quality thermoplastic polyurethane (TPU), hardness 94 Shore A, colour dark grey, non-marking, non-staining
- wheel centre: high-quality nylon 6, impact resistant, colour silver grey

Additional details:

- bracket series: page 86
- brakes: page 112–113
- wheel series: page 136
- bearing types: page 84–85

1



| Swivel castors | Fixed castors | Swivel castors with “stop-fix” brake | Wheel Ø [mm] | Wheel width [mm] | Load capacity [kg] | Bearing type | Total height [mm] | Plate size [mm] | Bolt hole spacing [mm] | Bolt hole Ø [mm] | Offset swivel castor [mm] |
|-----------------|-----------------|--------------------------------------|--------------|------------------|--------------------|------------------|-------------------|-----------------|------------------------|------------------|---------------------------|
| LPA-PATH 50G | BPA-PATH 50G | LPA-PATH 50G-FI * | 50 | 19 | 75 | plain bore | 71 | 60 x 60 | 38 x 38 / 48 x 48 | 6.2 | 23 |
| LPA-PATH 50KF | BPA-PATH 50KF | LPA-PATH 50KF-FI * | 50 | 19 | 75 | ball bearing (C) | 71 | 60 x 60 | 38 x 38 / 48 x 48 | 6.2 | 23 |
| LPA-PATH 75G | BPA-PATH 75G | LPA-PATH 75G-FI * | 75 | 25 | 75 | plain bore | 100 | 60 x 60 | 38 x 38 / 48 x 48 | 6.2 | 29 |
| LPA-PATH 75KF | BPA-PATH 75KF | LPA-PATH 75KF-FI * | 75 | 25 | 75 | ball bearing (C) | 100 | 60 x 60 | 38 x 38 / 48 x 48 | 6.2 | 29 |
| LKPA-PATH 80G | BKPA-PATH 80G | LKPA-PATH 80G-FI | 80 | 32 | 120 | plain bore | 111 | 90 x 66 | 75 x 45 / 61 x 51 | 8.5 | 40 |
| LKPA-PATH 80KF | BKPA-PATH 80KF | LKPA-PATH 80KF-FI | 80 | 32 | 120 | ball bearing (C) | 111 | 90 x 66 | 75 x 45 / 61 x 51 | 8.5 | 40 |
| LKPA-PATH 101G | BKPA-PATH 101G | LKPA-PATH 101G-FI | 100 | 32 | 120 | plain bore | 136 | 90 x 66 | 75 x 45 / 61 x 51 | 8.5 | 40 |
| LKPA-PATH 101KF | BKPA-PATH 101KF | LKPA-PATH 101KF-FI | 100 | 32 | 120 | ball bearing (C) | 136 | 90 x 66 | 75 x 45 / 61 x 51 | 8.5 | 40 |
| LKPA-PATH 126G | BKPA-PATH 126G | LKPA-PATH 126G-FI | 125 | 32 | 120 | plain bore | 161 | 90 x 66 | 75 x 45 / 61 x 51 | 8.5 | 40 |
| LKPA-PATH 126KF | BKPA-PATH 126KF | LKPA-PATH 126KF-FI | 125 | 32 | 120 | ball bearing (C) | 161 | 90 x 66 | 75 x 45 / 61 x 51 | 8.5 | 40 |

* Synthetic brake lever, see image below

For stainless steel versions, see page 395

Versions / options



| | plain bore version | with synthetic brake lever | electrically conductive version, non-marking grey |
|----------------------------|--------------------|------------------------------|---|
| Technical description page | | | 50 |
| Product code suffix | | | -ELS |
| Available for | | series LPA...-FI as standard | all ball bearing versions** |

** Wheel load capacity of electrically conductive version reduced by 35%

LMDA-PATH series

Twin wheel light duty castors with bolt hole, wheel with thermoplastic polyurethane tread

80–100 kg

Bracket: LMDA series

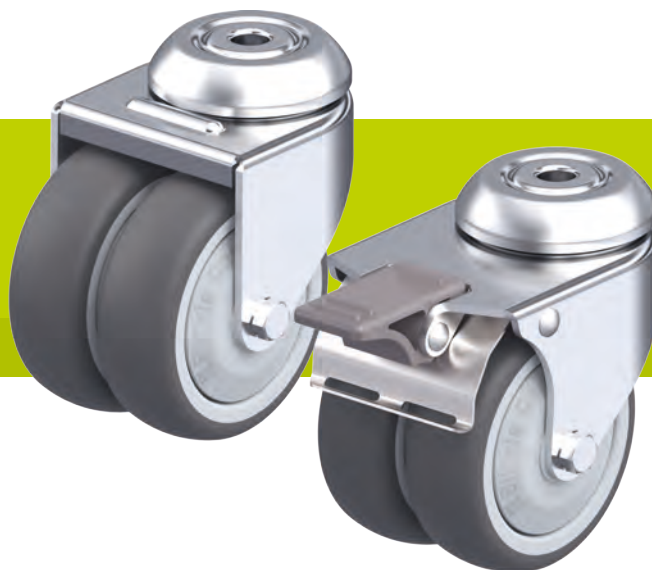
- pressed steel, zinc-plated, blue-passivated, Cr6-free
- double ball bearing in the swivel head
- pressed swivel head

Wheel: PATH series

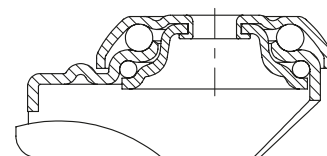
- tread: high-quality thermoplastic polyurethane (TPU), hardness 94 Shore A, colour dark grey, non-marking, non-staining
- wheel centre: high-quality nylon 6, impact resistant, colour silver grey

Additional details:

- bracket series: page 86
- brakes: page 112–113
- wheel series: page 136
- bearing types: page 84–85



1



| Swivel castors | Swivel castors with "stop-fix" brake | Wheel Ø [mm] | Wheel width [mm] | Load capacity [kg] | Bearing type | Total height [mm] | Plate Ø [mm] | Bolt hole Ø [mm] | Offset swivel castor [mm] |
|----------------|--------------------------------------|-----------------|---------------------|-----------------------|------------------|----------------------|-----------------|---------------------|------------------------------|
| LMDA-PATH 50G | LMDA-PATH 50G-FI | 50 | 2 x 19 | 80 | plain bore | 71 | 41 | 10.2 | 31 |
| LMDA-PATH 50KF | LMDA-PATH 50KF-FI | 50 | 2 x 19 | 80 | ball bearing (C) | 71 | 41 | 10.2 | 31 |
| LMDA-PATH 75G | LMDA-PATH 75G-FI | 75 | 2 x 25 | 100 | plain bore | 98 | 55 | 10.2 | 34 |
| LMDA-PATH 75KF | LMDA-PATH 75KF-FI | 75 | 2 x 25 | 100 | ball bearing (C) | 98 | 55 | 10.2 | 34 |

Versions / options



| | | |
|----------------------------|--------------------|---|
| | plain bore version | electrically conductive version, non-marking grey |
| Technical description page | | 50 |
| Product code suffix | | -ELS |
| Available for | | all ball bearing versions* |

* Wheel load capacity of electrically conductive version reduced by 35%

LDA-PATH series

Twin wheel light duty castors with top plate, wheels with thermoplastic polyurethane tread



80–100 kg

Bracket: LDA series

- pressed steel, zinc-plated, blue-passivated, Cr6-free
- double ball bearing in the swivel head
- pressed swivel head

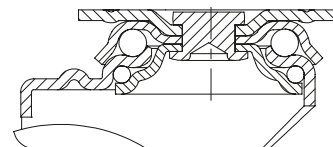
Wheel: PATH series

- tread: high-quality thermoplastic polyurethane (TPU), hardness 94 Shore A, colour dark grey, non-marking, non-staining
- wheel centre: high-quality nylon 6, impact resistant, colour silver grey

Additional details:

- bracket series: page 86
- brakes: page 112–113
- wheel series: page 136
- bearing types: page 84–85

1



| Swivel castors | Swivel castors with "stop-fix" brake | Wheel Ø [mm] | Wheel width [mm] | Load capacity [kg] | Bearing type | Total height [mm] | Plate size [mm] | Bolt hole spacing [mm] | Bolt hole Ø [mm] | Offset swivel castor [mm] |
|----------------|--------------------------------------|-----------------|---------------------|-----------------------|------------------|----------------------|--------------------|---------------------------|---------------------|------------------------------|
| LDA-PATH 50G | LDA-PATH 50G-FI | 50 | 2 x 19 | 80 | plain bore | 71 | 60 x 60 | 38 x 38 / 48 x 48 | 6.2 | 31 |
| LDA-PATH 50KF | LDA-PATH 50KF-FI | 50 | 2 x 19 | 80 | ball bearing (C) | 71 | 60 x 60 | 38 x 38 / 48 x 48 | 6.2 | 31 |
| LDA-PATH 75G | LDA-PATH 75G-FI | 75 | 2 x 25 | 100 | plain bore | 101 | 60 x 60 | 40 x 40 / 46 x 46 | 6.2 | 34 |
| LDA-PATH 75KF | LDA-PATH 75KF-FI | 75 | 2 x 25 | 100 | ball bearing (C) | 101 | 60 x 60 | 40 x 40 / 46 x 46 | 6.2 | 34 |

Versions / options



| | | |
|----------------------------|--------------------|---|
| | plain bore version | electrically conductive version, non-marking grey |
| Technical description page | | 50 |
| Product code suffix | | -ELS |
| Available for | | all ball bearing versions* |

* Wheel load capacity of electrically conductive version reduced by 35%

LRA-VSTH, LKRA-VSTH series

Light duty castors with bolt hole,
wheel with Blickle Extrathane®
polyurethane tread

100–150 kg

Bracket: LRA/LKRA series

- pressed steel, zinc-plated, blue-passivated, Cr6-free
- double ball bearing in the swivel head
- strong central kingpin
- minimum swivel head play and smooth rolling characteristic and increased service life due to the special dynamic Blickle riveting process

Wheel: VSTH series

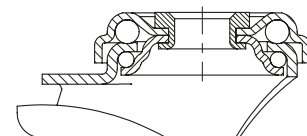
- tread: high-quality polyurethane elastomer Blickle Extrathane®, hardness 92 Shore A, colour light brown, non-marking, non-staining
- wheel centre: steel

Additional details:

- bracket series: page 86
- brakes: page 112–113
- wheel series: page 66
- bearing types: page 84–85



1



| Swivel castors | Swivel castors with "Radstop" brake | Wheel Ø [mm] | Wheel width [mm] | Load capacity [kg] | Bearing type | Total height [mm] | Plate Ø [mm] | Bolt hole Ø [mm] | Offset swivel castor [mm] |
|----------------|-------------------------------------|-----------------|---------------------|-----------------------|--------------|----------------------|-----------------|---------------------|------------------------------|
| LRA-VSTH 35K | LRA-VSTH 35K-RA | 35 | 27 | 100 | ball bearing | 50 | 43 | 11 | 15 |
| LKRA-VSTH 50K | LKRA-VSTH 50K-RA | 50 | 33 | 150 | ball bearing | 70 | 57 | 13 | 29 |

For additional castors with a high load capacity and low total height, see the "Compact castors" section

Versions / options

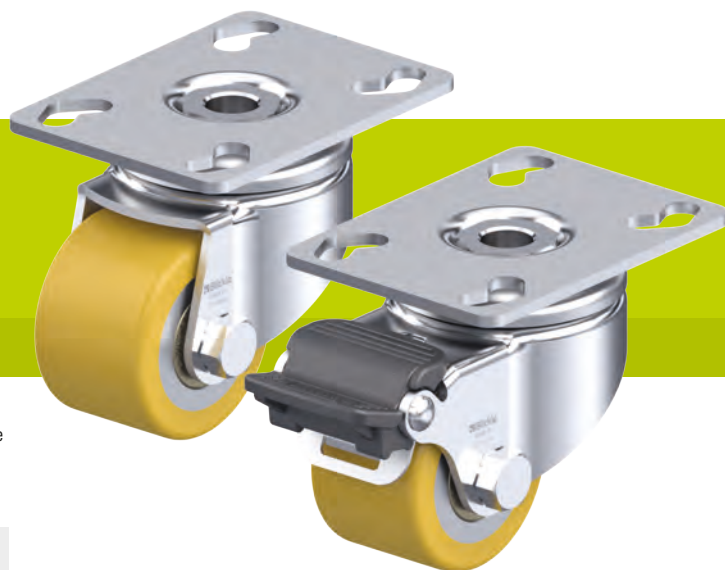


| | with threaded pin M10 x 30 | with threaded pin M12 x 30 | buffers |
|----------------------------|-------------------------------|-------------------------------|-----------------|
| Technical description page | 104 | 104 | 116 |
| Product code suffix | -GS10 | -GS12 | AG / ARG series |
| Available for | LRA-VSTH 35K* | LKRA-VSTH 50K | see page 148 |

* Load capacity reduced by 20%

LPA-VSTH, LKPA-VSTH series

Light duty castors with top plate,
wheel with Blickle Extrathane®
polyurethane tread



100–150 kg

Bracket: LPA/LKPA series

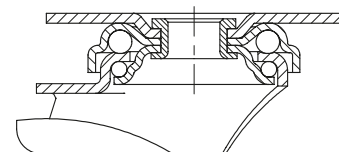
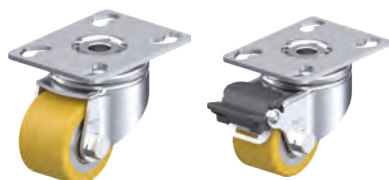
- pressed steel, zinc-plated, blue-passivated, Cr6-free
- double ball bearing in the swivel head
- strong central kingpin
- minimum swivel head play and smooth rolling characteristic and increased service life due to the special dynamic Blickle riveting process

Wheel: VSTH series

- tread: high-quality polyurethane elastomer Blickle Extrathane®, hardness 92 Shore A, colour light brown, non-marking, non-staining
- wheel centre: steel

Additional details:

- bracket series: page 86
- brakes: page 112–113
- wheel series: page 66
- bearing types: page 84–85



| Swivel castors | Swivel castors with "Radstop" brake | Wheel Ø [mm] | Wheel width [mm] | Load capacity [kg] | Bearing type | Total height [mm] | Plate size [mm] | Bolt hole spacing [mm] | Bolt hole Ø [mm] | Offset swivel castor [mm] |
|----------------|-------------------------------------|-----------------|---------------------|-----------------------|--------------|----------------------|--------------------|---------------------------|---------------------|------------------------------|
| LPA-VSTH 35K | LPA-VSTH 35K-RA | 35 | 27 | 100 | ball bearing | 52 | 60 x 60 | 38 x 38 / 48 x 48 | 6.2 | 15 |
| LKPA-VSTH 50K | LKPA-VSTH 50K-RA | 50 | 33 | 150 | ball bearing | 73 | 90 x 66 | 75 x 45 / 61 x 51 | 8.5 | 29 |

For additional castors with a high load capacity and low total height, see the "Compact castors" section

POA series

Nylon wheels

75–280 kg

Tread and tyre hardness
 70 Shore D

Smooth operation / floor preservation
 satisfactory

Rolling resistance
 excellent

Wear resistance
 good

- Wheel:**
- high-quality nylon 6, impact resistant, hardness 70 Shore D
 - excellent rolling and swivel resistance
 - easy operation on smooth surfaces
 - high abrasion resistance
 - colour black

- Other features:**
- high chemical resistance to many aggressive substances
 - operating temperature: -20 °C to +80 °C, reduced load capacity over +35 °C

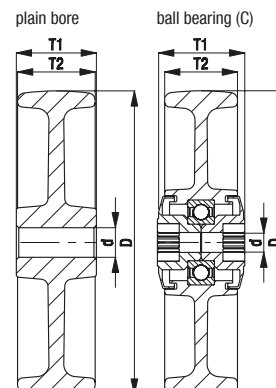
- Additional details:**
- wheel series: page 61
 - tread: page 57
 - bearing types: page 84–85
 - chemical resistance: page 51



1

| Wheels | Wheel Ø | Wheel width | Load capacity | Bearing type | Axle bore Ø | Hub length |
|--------------------|----------|-------------|---------------|------------------|-------------|------------|
| | (D) [mm] | (T2) [mm] | [kg] | | (d) [mm] | (T1) [mm] |
| POA 35/8G | 35 | 25 | 75 | plain bore | 8 | 29.5 |
| POA 50/8G | 50 | 18 | 75 | plain bore | 8 | 22 |
| POA 52/12G | 50 | 29 | 120 | plain bore | 12 | 31 |
| POA 58/10G | 58 | 29 | 100 | plain bore | 10 | 31 |
| POA 65/10G | 65 | 30 | 100 | plain bore | 10 | 33 |
| POA 65/12G | 65 | 30 | 100 | plain bore | 12 | 33 |
| POA 75/8G | 75 | 23 | 100 | plain bore | 8 | 29.5 |
| POA 80/12G | 80 | 32 | 220 | plain bore | 12 | 35 |
| POA 102/8G | 100 | 22 | 100 | plain bore | 8 | 29.5 |
| POA 100/8K | 100 | 30 | 240 | ball bearing (C) | 8 | 36 |
| POA 100/12G | 100 | 32 | 240 | plain bore | 12 | 35 |
| POA 125/8K | 125 | 30 | 260 | ball bearing (C) | 8 | 36 |
| POA 125/12G | 125 | 32 | 260 | plain bore | 12 | 35 |
| POA 150/12G | 150 | 32 | 280 | plain bore | 12 | 35 |

For additional nylon wheels, see page 343, 344



LRA-POA, BRA-POA, LKRA-POA, BKRA-POA series

Light duty castors with bolt hole, with nylon wheel

70–120 kg

Bracket: LRA/BRA, LKRA/BKRA series
 • pressed steel, zinc-plated, blue-passivated, Cr6-free

Swivel bracket:

- double ball bearing in the swivel head
- strong central kingpin
- minimum swivel head play and smooth rolling characteristic and increased service life due to the special dynamic Blickle riveting process
- synthetic “stop-fix” brake lever for series LRA, steel brake lever for series LKRA

Wheel: POA series

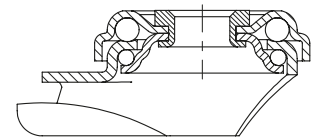
- high-quality nylon 6, impact resistant, hardness 70 Shore D, colour black

Additional details:

- bracket series: page 86
- brakes: page 112–113
- wheel series: page 143
- bearing types: page 84–85



1



| Swivel castors | Fixed castors | Swivel castors with “stop-fix” brake | Wheel Ø [mm] | Wheel width [mm] | Load capacity [kg] | Bearing type | Total height [mm] | Plate Ø [mm] | Bolt hole Ø [mm] | Offset swivel castor [mm] |
|------------------|---------------|--------------------------------------|--------------|------------------|--------------------|------------------|-------------------|--------------|------------------|---------------------------|
| LRA-POA 35G | | LRA-POA 35G-RA * | 35 | 25 | 75 | plain bore | 50 | 43 | 11 | 15 |
| LRA-POA 50G | BRA-POA 50G | LRA-POA 50G-FI ** | 50 | 18 | 75 | plain bore | 69 | 43 | 11 | 23 |
| LKRA-POA 52G | | LKRA-POA 52G-RA * | 50 | 29 | 120 | plain bore | 70 | 57 | 13 | 29 |
| LRA-POA 75G | BRA-POA 75G | LRA-POA 75G-FI ** | 75 | 23 | 75 | plain bore | 98 | 43 | 11 | 29 |
| LKRA-POA 80G | BKRA-POA 80G | LKRA-POA 80G-FI | 80 | 32 | 120 | plain bore | 108 | 57 | 13 | 40 |
| LKRA-POA 80G-11 | | LKRA-POA 80G-11-FI | 80 | 32 | 120 | plain bore | 108 | 57 | 11 | 40 |
| LRA-POA 102G | | LRA-POA 102G-FI ** | 100 | 22 | 70 | plain bore | 121 | 43 | 11 | 33 |
| LKRA-POA 100K | BKRA-POA 100K | LKRA-POA 100K-FI | 100 | 30 | 120 | ball bearing (C) | 133 | 57 | 13 | 40 |
| LKRA-POA 100K-11 | | LKRA-POA 100K-11-FI | 100 | 30 | 120 | ball bearing (C) | 133 | 57 | 11 | 40 |
| LKRA-POA 100G | BKRA-POA 100G | LKRA-POA 100G-FI | 100 | 32 | 120 | plain bore | 133 | 57 | 13 | 40 |
| LKRA-POA 100G-11 | | LKRA-POA 100G-11-FI | 100 | 32 | 120 | plain bore | 133 | 57 | 11 | 40 |
| LKRA-POA 125K | BKRA-POA 125K | LKRA-POA 125K-FI | 125 | 30 | 120 | ball bearing (C) | 158 | 57 | 13 | 40 |
| LKRA-POA 125K-11 | | LKRA-POA 125K-11-FI | 125 | 30 | 120 | ball bearing (C) | 158 | 57 | 11 | 40 |
| LKRA-POA 125G | BKRA-POA 125G | LKRA-POA 125G-FI | 125 | 32 | 120 | plain bore | 158 | 57 | 13 | 40 |
| LKRA-POA 125G-11 | | LKRA-POA 125G-11-FI | 125 | 32 | 120 | plain bore | 158 | 57 | 11 | 40 |
| LKRA-POA 150G | BKRA-POA 150G | LKRA-POA 150G-FI | 150 | 32 | 110 | plain bore | 182 | 57 | 13 | 40 |
| LKRA-POA 150G-11 | | LKRA-POA 150G-11-FI | 150 | 32 | 110 | plain bore | 182 | 57 | 11 | 40 |

* “Radstop” brake version

** Synthetic brake lever, see image below

For stainless steel versions, see page 396

Versions / options



| | with synthetic brake lever | “Radstop” wheel brake | with threaded pin M10 x 30 M12 x 30 | with plug-in pin Ø 11 x 30.5 | with synthetic expander fitting | with metal expander fitting | buffers |
|----------------------------|------------------------------|--|--------------------------------------|------------------------------|--|--|-----------------|
| Technical description page | | | 104 | 105 | 105 | 105 | 116 |
| Product code suffix | | | -GS10 / -GS12 | -ES | see page 148 | see page 148 | AG / ARG series |
| Available for | series LRA...-FI as standard | series LRA Ø 35 mm series LKRA Ø 50 mm | -GS10: series LRA -GS12: series LKRA | series LRA swivel castors*** | swivel castors bolt hole Ø 11 mm (with exception of Ø 35 mm) | swivel castors bolt hole Ø 11 mm (with exception of Ø 35 mm) | see page 148 |

*** Synthetic castor socket for round tubes see page 148

LPA-POA, BPA-POA, LKPA-POA, BKPA-POA series

Light duty castors with top plate, with nylon wheel

70–120 kg

Bracket: LPA/BPA, LKPA/BKPA series

- pressed steel, zinc-plated, blue-passivated, Cr6-free

Swivel bracket:

- double ball bearing in the swivel head
- strong central kingpin
- minimum swivel head play and smooth rolling characteristic and increased service life due to the special dynamic Blickle riveting process
- synthetic “stop-fix” brake lever for series LPA, steel brake lever for series LKPA

Wheel: POA series

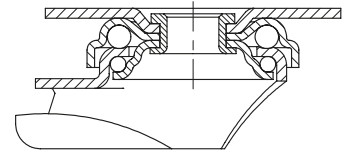
- high-quality nylon 6, impact resistant, hardness 70 Shore D, colour black

Additional details:

- bracket series: page 86
- brakes: page 112–113
- wheel series: page 143
- bearing types: page 84–85



1



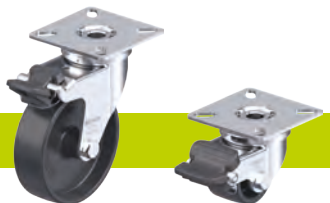
| Swivel castors | Fixed castors | Swivel castors with “stop-fix” brake | Wheel Ø [mm] | Wheel width [mm] | Load capacity [kg] | Bearing type | Total height [mm] | Plate size [mm] | Bolt hole spacing [mm] | Bolt hole Ø [mm] | Offset swivel castor [mm] |
|----------------|---------------|--------------------------------------|--------------|------------------|--------------------|------------------|-------------------|-----------------|------------------------|------------------|---------------------------|
| LPA-POA 35G | | LPA-POA 35G-RA * | 35 | 25 | 75 | plain bore | 52 | 60 x 60 | 38 x 38 / 48 x 48 | 6.2 | 15 |
| LPA-POA 50G | BPA-POA 50G | LPA-POA 50G-FI ** | 50 | 18 | 75 | plain bore | 71 | 60 x 60 | 38 x 38 / 48 x 48 | 6.2 | 23 |
| LKPA-POA 52G | | LKPA-POA 52G-RA * | 50 | 29 | 120 | plain bore | 73 | 90 x 66 | 75 x 45 / 61 x 51 | 8.5 | 29 |
| LPA-POA 75G | BPA-POA 75G | LPA-POA 75G-FI ** | 75 | 23 | 75 | plain bore | 100 | 60 x 60 | 38 x 38 / 48 x 48 | 6.2 | 29 |
| LKPA-POA 80G | BKPA-POA 80G | LKPA-POA 80G-FI | 80 | 32 | 120 | plain bore | 111 | 90 x 66 | 75 x 45 / 61 x 51 | 8.5 | 40 |
| LPA-POA 102G | | LPA-POA 102G-FI ** | 100 | 22 | 70 | plain bore | 123 | 60 x 60 | 38 x 38 / 48 x 48 | 6.2 | 33 |
| LKPA-POA 100K | BKPA-POA 100K | LKPA-POA 100K-FI | 100 | 30 | 120 | ball bearing (C) | 136 | 90 x 66 | 75 x 45 / 61 x 51 | 8.5 | 40 |
| LKPA-POA 100G | BKPA-POA 100G | LKPA-POA 100G-FI | 100 | 32 | 120 | plain bore | 136 | 90 x 66 | 75 x 45 / 61 x 51 | 8.5 | 40 |
| LKPA-POA 125K | BKPA-POA 125K | LKPA-POA 125K-FI | 125 | 30 | 120 | ball bearing (C) | 161 | 90 x 66 | 75 x 45 / 61 x 51 | 8.5 | 40 |
| LKPA-POA 125G | BKPA-POA 125G | LKPA-POA 125G-FI | 125 | 32 | 120 | plain bore | 161 | 90 x 66 | 75 x 45 / 61 x 51 | 8.5 | 40 |
| LKPA-POA 150G | BKPA-POA 150G | LKPA-POA 150G-FI | 150 | 32 | 110 | plain bore | 185 | 90 x 66 | 75 x 45 / 61 x 51 | 8.5 | 40 |

* “Radstop” brake version

** Synthetic brake lever, see image below

For stainless steel versions, see page 397

Versions / options



| | |
|----------------------------|-----------------------|
| with synthetic brake lever | “Radstop” wheel brake |
|----------------------------|-----------------------|

Technical description page

Product code suffix

| | | |
|---------------|------------------------------|--|
| Available for | series LPA...-FI as standard | series LPA Ø 35 mm series LKPA Ø 50 mm |
|---------------|------------------------------|--|

LMDA-POA series

Twin wheel light duty castors with bolt hole, with nylon wheels



80–100 kg

Bracket: LMDA series

- pressed steel, zinc-plated, blue-passivated, Cr6-free
- double ball bearing in the swivel head
- pressed swivel head

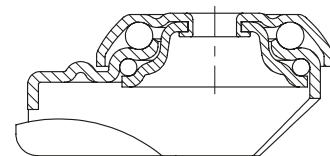
Wheel: POA series

- high-quality nylon 6, impact resistant, hardness 70 Shore D, colour black

Additional details:

- bracket series: page 86
- brakes: page 112–113
- wheel series: page 143
- bearing types: page 84–85

1



| Swivel castors | Swivel castors with "stop-fix" brake | Wheel Ø [mm] | Wheel width [mm] | Load capacity [kg] | Bearing type | Total height [mm] | Plate Ø [mm] | Bolt hole Ø [mm] | Offset swivel castor [mm] |
|----------------|--------------------------------------|-----------------|---------------------|-----------------------|--------------|----------------------|-----------------|---------------------|------------------------------|
| LMDA-POA 50G | LMDA-POA 50G-FI | 50 | 2 x 18 | 80 | plain bore | 71 | 41 | 10.2 | 31 |
| LMDA-POA 75G | LMDA-POA 75G-FI | 75 | 2 x 23 | 100 | plain bore | 98 | 55 | 10.2 | 34 |

LDA-POA series

Twin wheel light duty castors with top plate, with nylon wheels

80–100 kg

Bracket: LDA series

- pressed steel, zinc-plated, blue-passivated, Cr6-free
- double ball bearing in the swivel head
- pressed swivel head

Wheel: POA series

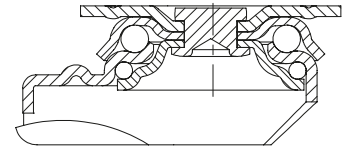
- high-quality nylon 6, impact resistant, hardness 70 Shore D, colour black

Additional details:

- bracket series: page 86
- brakes: page 112–113
- wheel series: page 143
- bearing types: page 84–85



1



| Swivel castors | Swivel castors with "stop-fix" brake | Wheel Ø [mm] | Wheel width [mm] | Load capacity [kg] | Bearing type | Total height [mm] | Plate size [mm] | Bolt hole spacing [mm] | Bolt hole Ø [mm] | Offset swivel castor [mm] |
|----------------|--------------------------------------|-----------------|---------------------|-----------------------|--------------|----------------------|--------------------|---------------------------|---------------------|------------------------------|
| LDA-POA 50G | LDA-POA 50G-FI | 50 | 2 x 18 | 80 | plain bore | 71 | 60 x 60 | 38 x 38 / 48 x 48 | 6.2 | 31 |
| LDA-POA 75G | LDA-POA 75G-FI | 75 | 2 x 23 | 100 | plain bore | 101 | 60 x 60 | 40 x 40 / 46 x 46 | 6.2 | 34 |

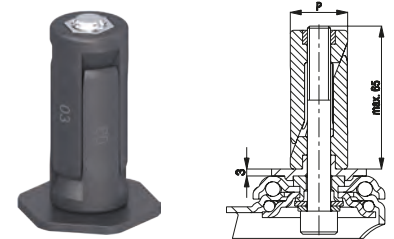
Versions / options for light-duty castors

1

Synthetic expander fitting for round tubes *

| Product code suffix for LRA series | Product code suffix for LKRA series | Internal tube dimension (P) [mm] | Available for all swivel castors in the LRA/ LKRA series with bolt hole \varnothing 11 mm. Swivel castor and expander secured to prevent loosening with positive locking. Maximum fitting length is 65 mm. Increases total height of swivel castors by 3 mm. |
|------------------------------------|-------------------------------------|----------------------------------|---|
| -ER02 | -ER12 | \varnothing 20–25 | Detailed description: page 105 |
| -ER03 | -ER13 | \varnothing 25–30 | |
| -ER04 | -ER14 | \varnothing 30–35 | |
| -ER05 | -ER15 | \varnothing 35–40 | |

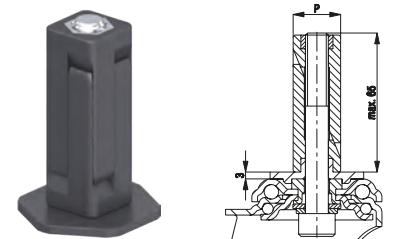
* Corrosion-resistant versions page 398



Synthetic expander fitting for square tubes *

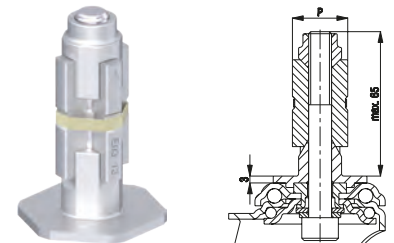
| Product code suffix for LRA series | Product code suffix for LKRA series | Internal tube dimension (P) [mm] | Available for all swivel castors in the LRA/ LKRA series with bolt hole \varnothing 11 mm. Swivel castor and expander secured to prevent loosening with positive locking. Maximum fitting length is 65 mm. Increases total height of swivel castors by 3 mm. |
|------------------------------------|-------------------------------------|----------------------------------|---|
| -EV02 | -EV12 | \square 18–21 | Detailed description: page 105 |
| -EV03 | -EV13 | \square 21–25 | |
| -EV04 | -EV14 | \square 25–29 | |
| -EV05 | -EV15 | \square 29–32 | |
| -EV07 | -EV17 | \square 32–38.5 | |
| | -EV18 | \square 35.5–41 | |

* Corrosion-resistant versions page 398



Metal expander fitting for round and square tubes

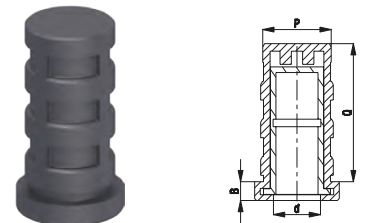
| Product code suffix for LRA series | Product code suffix for LKRA series | Internal tube dimension round tube (P) [mm] | Internal tube dimension square tube (P) [mm] | Available for all swivel castors in the LRA / LKRA series with bolt hole \varnothing 11 mm. Swivel castor and expander secured against rotation by positive locking. Maximum fitting length is 65 mm. Increases total height of swivel castors by 3 mm. |
|------------------------------------|-------------------------------------|---|--|--|
| -E01 | -E11 | \varnothing 17–19 | \square 17–19 | Detailed description: page 105 |
| -E02 | -E12 | \varnothing 20–25 | \square 18–21 | |
| -E03 | -E13 | \varnothing 25–30 | \square 21–25 | |
| -E04 | -E14 | \varnothing 30–35 | \square 25–29 | |
| -E05 | -E15 | \varnothing 35–40 | \square 29–32 | |
| -E07 | -E17 | \varnothing 39–45 | \square 32–38.5 | |



Synthetic castor socket for round tube

| Product code | Internal tube dimension round tube (P) [mm] | Flange dimension \varnothing (d) x height (B) [mm] | Fitting length castor sockets (Q) [mm] | Available for all swivel castors with plug-in pin \varnothing (d) 11 x 30.5 mm in the LRA series. Detailed description: page 105 |
|---------------|---|--|--|--|
| RHR 20-18/11A | \varnothing 18.0 | \varnothing 20.0 x 5.0 | 42 | |
| RHR 22-19/11A | \varnothing 19.0 | \varnothing 22.0 x 5.0 | 42 | |

Other dimensions are available upon request



Buffers for round and square tubes

| Product code | Wheel \varnothing (D) [mm] | Wheel width (T1) [mm] | Hole (d) [mm] | Buffers reduce the risk of damage to walls and vehicles in the event of a collision. Buffers for round and square tubes are fixed or connected to tubular frames in the external areas of vehicles. AG series: Made from soft synthetic polyethylene, hardness 48 Shore D, colour silver grey RAL 7001, non-marking. ARG series: Made from solid rubber, hardness 75 Shore A, colour grey, non-marking. Detailed description: page 116 |
|---|------------------------------|-----------------------|-------------------|--|
| Synthetic buffers (polyethylene) | | | | |
| AG 100/R25 | 100 | 17.5 | \varnothing 25 | |
| AG 100/V25 | 100 | 17.5 | \square 25 x 25 | |
| AG 125/R25 | 125 | 17.5 | \varnothing 25 | |
| AG 125/V25 | 125 | 17.5 | \square 25 x 25 | |
| Solid rubber buffers | | | | |
| ARG 75/R10 | 75 | 23 | \varnothing 10 | |
| ARG 100/R26 | 100 | 23 | \varnothing 26 | |
| ARG 100/R32 | 100 | 23 | \varnothing 32 | |
| ARG 125/R26 | 125 | 23 | \varnothing 26 | |
| ARG 125/R32 | 125 | 23 | \varnothing 32 | |

Other dimensions and special colours available upon request

