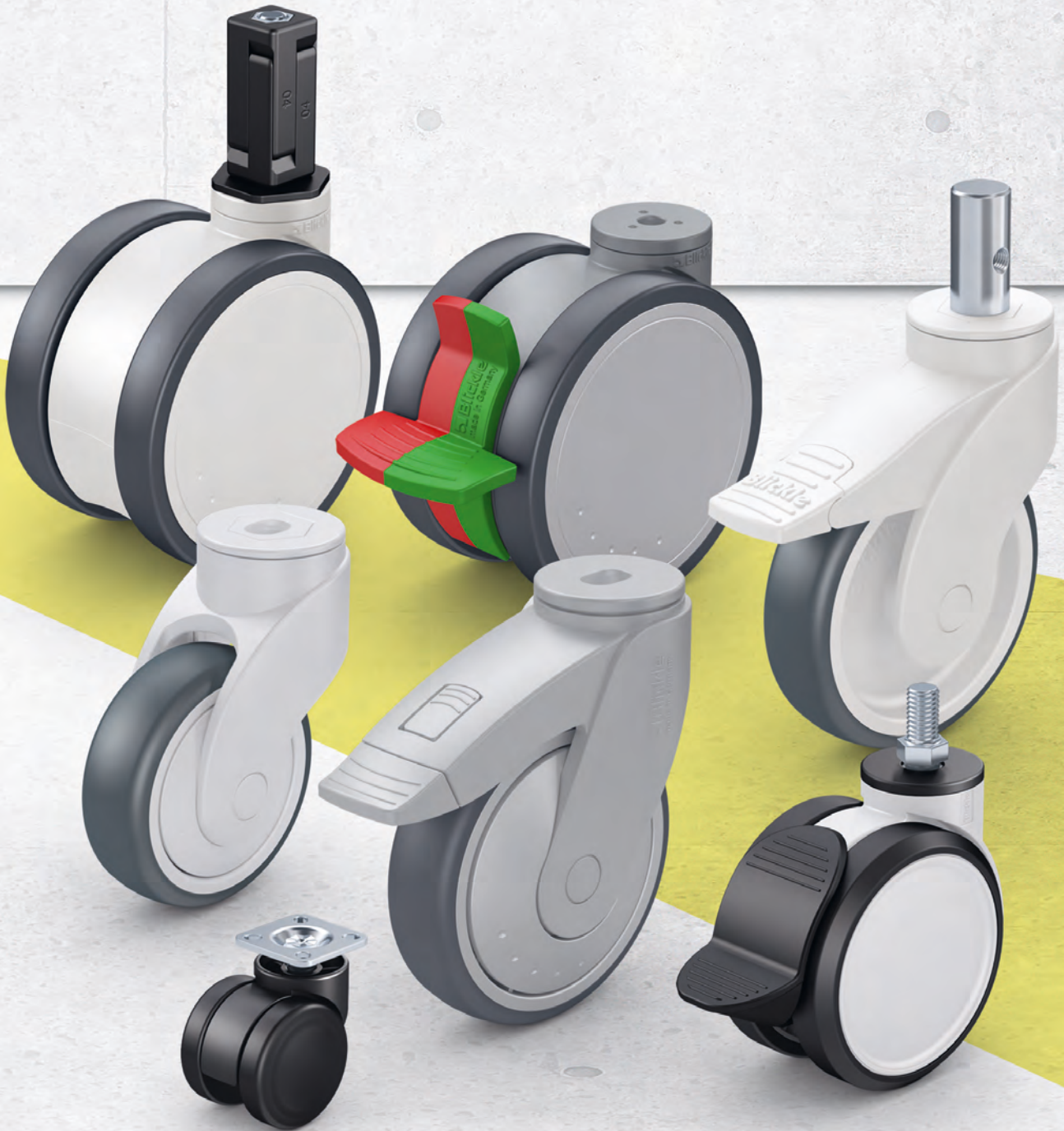


Synthetic castors



Selection tool

Synthetic castors

2



Series	LKFG-TPA	LKFGX-TPA	LWK-TPA	LWG-TPA	LWKX-TPA	LWXG-TPA
Category	Castors with ball race groove in swivel head		Castors with ball bearing in swivel head			
Tread / tyre	Thermoplastic rubber-elastomer (TPE)					
Tread and tyre hardness	85 Shore A	85 Shore A	85 Shore A	85 Shore A	85 Shore A	85 Shore A
Wheel centre / rim	polypropylene	polypropylene	polypropylene	polypropylene	polypropylene	polypropylene
Bracket material	thermoplastic	thermoplastic	nylon	nylon	nylon	nylon
Bracket colour	silver grey (optional grey white)	silver grey (optional grey white)	grey white	silver grey	grey white	silver grey
Wheel Ø	125 mm	125 mm	100–125 mm	100–125 mm	100–125 mm	100–125 mm
Castor load capacity up to	110 kg	110 kg	110 kg	110 kg	110 kg	110 kg
Corrosion-resistant	–	✓	–	–	✓	✓
“stop-fix” brake (-FI)	✓	✓	✓	✓	✓	✓
“Radstop” wheel brake (-RA)	–	–	–	–	–	–
Dual purpose directional lock combined with wheel brake (-RIFI)	–	–	–	–	–	–
For information about swivel castors, refer to	page 154	page 155	page 156–158	page 159–161	page 162–164	page 165–167

✓ yes – no



LKDG-PUA	LKDB-PUA	LKD-PATH	LKDG-PATH	LKDX-PATH	LKDGX-PATH
Twin wheel castors with plain synthetic swivel head bearing		Twin wheel castors with ball bearing in swivel head			
Thermoplastic polyurethane (TPU)		Thermoplastic polyurethane (TPU)			
92 Shore A	92 Shore A	94 Shore A	94 Shore A	94 Shore A	94 Shore A
nylon	nylon	nylon	nylon	nylon	nylon
nylon	nylon	nylon	nylon	nylon	nylon
light grey	black	grey white	silver grey	grey white	silver grey
100 mm	50–100 mm	100–125 mm	100–125 mm	100–125 mm	100–125 mm
110 kg	110 kg	125 kg	125 kg	125 kg	125 kg
optional	optional	–	–	✓	✓
–	–	✓	✓	✓	✓
✓	✓	–	–	–	–
–	–	✓	✓	✓	✓
page 170	page 171	page 172–173	page 174–175	page 176–177	page 178–179

LKFG-TPA, BKFG-TPA series

Blickle FLOW synthetic castors with bolt hole, colour silver grey, wheel with thermoplastic rubber tread

110 kg

-20 °C to +50 °C

Bracket: LKFG/BKFG series

- high-quality thermoplastic
- colour silver grey RAL 7001
- modern, appealing design

Swivel bracket:

- double ball bearing in the swivel head
- bolt hole

Wheel: TPA series

- tread: high-quality thermoplastic rubber-elastomer (TPE), hardness 85 Shore A, colour grey, non-marking, oil containing
- wheel centre: high-quality polypropylene, impact resistant, colour silver grey RAL 7001

Other features:

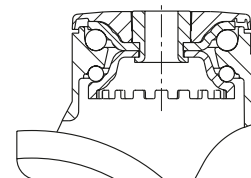
- the load capacity reduces at ambient temperatures above +30 °C

Additional details:

- bracket series: page 87
- brakes: page 112–113
- wheel series: page 60
- bearing types: page 84–85



2



Swivel castors	Swivel castors with "stop-fix" brake	Wheel Ø [mm]	Wheel width [mm]	Load capacity [kg]	Bearing type	Total height [mm]	Plate Ø [mm]	Bolt hole Ø [mm]	Offset swivel castor [mm]
LKFG-TPA 126G	LKFG-TPA 126G-FI	125	32	110	plain bore	160	55	13	40
LKFG-TPA 126G-11	LKFG-TPA 126G-11-FI	125	32	110	plain bore	160	55	11	40
LKFG-TPA 126KF	LKFG-TPA 126KF-FI	125	32	110	ball bearing (C)	160	55	13	40
LKFG-TPA 126KF-11	LKFG-TPA 126KF-11-FI	125	32	110	ball bearing (C)	160	55	11	40

For corrosion-resistant versions of synthetic castors, see page 155



Versions / options



	plain bore version	version soft tread 60 Shore A	with top plate fitting zinc-plated version	with zinc-plated plug-in stem	fixed castors	colour grey white RAL 9002	brake lever in special colour
Technical description page			106	104			
Product code suffix		LKFG-TPS / BKFG-TPS series	-P25	-ZA51	BKFG-TPA series	LKF-TPA series	
Available for		upon request*	all**	upon request***	upon request	upon request	upon request

* Load capacity reduced by 30%

** Increases total height of castors by 1 mm

*** ZA51: stem Ø 18 mm, stem length 62 mm, position cross hole 30 mm, cross hole for bolt M6

LKFGX-TPA, BKFGX-TPA series

Blickle FLOW synthetic castors, corrosion-resistant, with bolt hole, colour silver grey, wheel with thermoplastic rubber tread



110 kg

-20 °C to +50 °C

Bracket: LKFGX/BKFGX series

- high-quality thermoplastic
 - colour silver grey RAL 7001
 - all parts including axle material are corrosion-resistant
 - modern, appealing design
- Swivel bracket:**
- double corrosion-resistant ball bearing in the swivel head
 - bolt hole

Wheel: TPA series

- tread: high-quality thermoplastic rubber-elastomer (TPE), hardness 85 Shore A, colour grey, non-marking, oil containing
- wheel centre: high-quality polypropylene, impact resistant, colour silver grey RAL 7001

Other features:

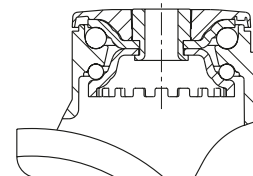
- the load capacity reduces at ambient temperatures above +30 °C

Additional details:

- bracket series: page 87
- brakes: page 112–113
- wheel series: page 60
- bearing types: page 84–85



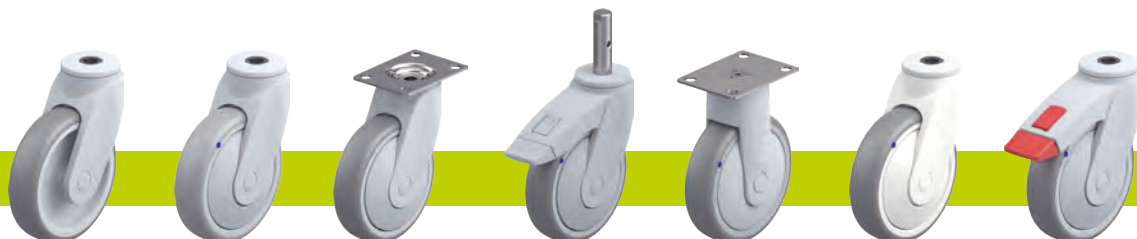
2



Swivel castors	Swivel castors with "stop-fix" brake	Wheel Ø [mm]	Wheel width [mm]	Load capacity [kg]	Bearing type	Total height [mm]	Plate Ø [mm]	Bolt hole Ø [mm]	Offset swivel castor [mm]
LKFGX-TPA 126G	LKFGX-TPA 126G-FI	125	32	110	plain bore	160	55	13	40
LKFGX-TPA 126G-11	LKFGX-TPA 126G-11-FI	125	32	110	plain bore	160	55	11	40
LKFGX-TPA 126XKF-11	LKFGX-TPA 126XKF-11-FI	125	32	110	ball bearing (C)	160	55	11	40
LKFGX-TPA 126XKF	LKFGX-TPA 126XKF-FI	125	32	110	ball bearing	160	55	13	40



Versions / options



	plain bore version	version soft tread 60 Shore A	with top plate fitting stainless steel version in accordance with GKN standard	with stainless steel plug-in stem	fixed castors	colour grey white RAL 9002	brake lever in special colour
Technical description page			106	104			
Product code suffix		LKFGX-TPS / BKFGX-TPS series	-PX27	-ZAX51	BKFGX-TPA series	LKFX-TPA series	
Available for		upon request*	all**	upon request***	upon request	upon request	upon request

* Load capacity reduced by 30%

** Increases total height of castors by 1 mm

*** ZAX51: stem Ø 18 mm, stem length 62 mm, position cross hole 30 mm, cross hole for bolt M6

LWK-TPA series

Blickle WAVE synthetic castors with bolt hole, colour grey white, wheel with thermoplastic rubber tread



100–110 kg

-20 °C to +60 °C

Bracket: LWK series

- high-quality nylon 6, impact resistant
- encapsulated, double-sealed, grooved ball bearing in the swivel head
- bolt hole
- colour grey white RAL 9002
- modern, appealing design

Wheel: TPA series

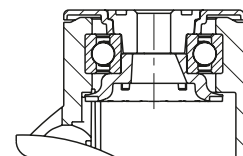
- tread: high-quality thermoplastic rubber-elastomer (TPE), hardness 85 Shore A, colour grey, non-marking, oil containing
- wheel centre: high-quality polypropylene, impact resistant, colour grey white RAL 9002

Other features:

- the load capacity reduces at ambient temperatures above +30 °C

Additional details:

- bracket series: page 88
- brakes: page 112–113
- wheel series: page 60
- bearing types: page 84–85



Swivel castors	Swivel castors with "stop-fix" brake	Wheel Ø [mm]	Wheel width [mm]	Load capacity [kg]	Bearing type	Total height [mm]	Plate Ø [mm]	Bolt hole Ø [mm]	Offset swivel castor [mm]
LWK-TPA 101G	LWK-TPA 101G-FI	100	32	100	plain bore	135	55	13	38
LWK-TPA 101G-11	LWK-TPA 101G-11-FI	100	32	100	plain bore	135	55	11	38
LWK-TPA 101KF	LWK-TPA 101KF-FI	100	32	100	ball bearing (C)	135	55	13	38
LWK-TPA 101KF-11	LWK-TPA 101KF-11-FI	100	32	100	ball bearing (C)	135	55	11	38
LWK-TPA 126G	LWK-TPA 126G-FI	125	32	110	plain bore	160	55	13	40
LWK-TPA 126G-11	LWK-TPA 126G-11-FI	125	32	110	plain bore	160	55	11	40
LWK-TPA 126KF	LWK-TPA 126KF-FI	125	32	110	ball bearing (C)	160	55	13	40
LWK-TPA 126KF-11	LWK-TPA 126KF-11-FI	125	32	110	ball bearing (C)	160	55	11	40

For corrosion-resistant versions of synthetic castors, see page 162

Versions / options *



	plain bore version	electrically-conductive version, non-marking, grey	with "central-stop" central brake system	with threaded pin M10 x 20 M12 x 20	with synthetic expander fitting	with metal expander fitting	brake lever in special colour
Technical description page		50	113	104	105	105	
Product code suffix		LWKE-...-ELS	-CS11	-GS10 / -GS12	see page 168	see page 168	
Available for		all ball bearing versions**	all with bolt hole Ø 13 mm	all with bolt hole Ø 13 mm	bolt hole Ø 11 mm upon request***	bolt hole Ø 11 mm upon request****	upon request

* Other versions / options: buffers AW / AG / ARG series; rotating buffers -AMW / -AMG series see page 169 (technical information on page 116)

** Load capacity of electrically conductive version reduced by 35%

*** Not for electrically conductive version, Total height +3 mm

**** Total height +7 mm

LWK-TPA series

Blickle WAVE synthetic castors with top plate, colour grey white, wheel with thermoplastic rubber tread



100–110 kg

-20 °C to +60 °C

Bracket: LWK series

- high-quality nylon 6, impact resistant
- encapsulated, double-sealed, grooved ball bearing in the swivel head
- zinc-plated blue-passivated steel top plate fitting (Cr6-free)
- colour grey white RAL 9002
- modern, appealing design

Wheel: TPA series

- tread: high-quality thermoplastic rubber-elastomer (TPE), hardness 85 Shore A, colour grey, non-marking, oil containing
- wheel centre: high-quality polypropylene, impact resistant, colour grey white RAL 9002

Other features:

- the load capacity reduces at ambient temperatures above +30 °C

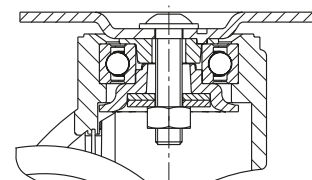
Additional details:

- bracket series: page 88
- brakes: page 112–113
- wheel series: page 60
- bearing types: page 84–85



BLICKLE DESIGN LINE

2



Swivel castors	Swivel castors with "stop-fix" brake	Wheel Ø [mm]	Wheel width [mm]	Load capacity [kg]	Bearing type	Total height [mm]	Plate size [mm]	Bolt hole spacing [mm]	Bolt hole Ø [mm]	Offset swivel castor [mm]
LWK-TPA 101G-P25	LWK-TPA 101G-FI-P25	100	32	100	plain bore	138	90 x 66	75 x 45 / 61 x 51	8.5	38
LWK-TPA 101KF-P25	LWK-TPA 101KF-FI-P25	100	32	100	ball bearing (C)	138	90 x 66	75 x 45 / 61 x 51	8.5	38
LWK-TPA 126G-P25	LWK-TPA 126G-FI-P25	125	32	110	plain bore	163	90 x 66	75 x 45 / 61 x 51	8.5	40
LWK-TPA 126KF-P25	LWK-TPA 126KF-FI-P25	125	32	110	ball bearing (C)	163	90 x 66	75 x 45 / 61 x 51	8.5	40

For corrosion-resistant versions of synthetic castors, see page 163

Versions / options



	plain bore version	electrically-conductive version, non-marking, grey	with plate size 78x66 mm 61x50/50x42 mm	brake lever in special colour
Technical description page		50	106	
Product code suffix		LWKE-...-ELS	-P28	
Available for		all ball bearing versions*	upon request	upon request

* Load capacity of electrically conductive version reduced by 35%

LWK-TPA series

Blickle WAVE synthetic castors with stem, colour grey white, wheel with thermoplastic rubber tread



100–110 kg

-20 °C to +60 °C

Bracket: LWK series

- high-quality nylon 6, impact resistant
- encapsulated, double-sealed, grooved ball bearing in the swivel head
- zinc-plated, blue-passivated steel plug-in stem (Cr6-free), bolted and secured
- colour grey white RAL 9002
- modern, appealing design

Wheel: TPA series

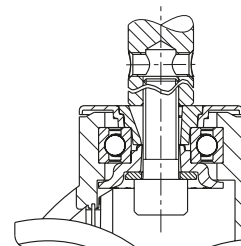
- tread: high-quality thermoplastic rubber-elastomer (TPE), hardness 85 Shore A, colour grey, non-marking, oil containing
- wheel centre: high-quality polypropylene, impact resistant, colour grey white RAL 9002

Other features:

- the load capacity reduces at ambient temperatures above +30 °C

Additional details:

- bracket series: page 88
- brakes: page 112–113
- wheel series: page 60
- bearing types: page 84–85



Swivel castors	Swivel castors with "stop-fix" brake	Wheel Ø [mm]	Wheel width [mm]	Load capacity [kg]	Bearing type	Total height [mm]	Stem Ø [mm]	Stem length [mm]	Ø cross hole [mm]	Position cross hole (H) [mm]	Offset swivel castor [mm]
LWK-TPA 101G-ZA51	LWK-TPA 101G-FI-ZA51	100	32	100	plain bore	135	18	62	M6	30	38
LWK-TPA 101G-ZA55	LWK-TPA 101G-FI-ZA55	100	32	100	plain bore	135	22	45	M8	20	38
LWK-TPA 101KF-ZA51	LWK-TPA 101KF-FI-ZA51	100	32	100	ball bearing (C)	135	18	62	M6	30	38
LWK-TPA 101KF-ZA55	LWK-TPA 101KF-FI-ZA55	100	32	100	ball bearing (C)	135	22	45	M8	20	38
LWK-TPA 126G-ZA51	LWK-TPA 126G-FI-ZA51	125	32	110	plain bore	160	18	62	M6	30	40
LWK-TPA 126G-ZA55	LWK-TPA 126G-FI-ZA55	125	32	110	plain bore	160	22	45	M8	20	40
LWK-TPA 126KF-ZA51	LWK-TPA 126KF-FI-ZA51	125	32	110	ball bearing (C)	160	18	62	M6	30	40
LWK-TPA 126KF-ZA55	LWK-TPA 126KF-FI-ZA55	125	32	110	ball bearing (C)	160	22	45	M8	20	40

For corrosion-resistant versions of synthetic castors, see page 164
Additional stem fitting dimensions available upon request

Versions / options



	plain bore version	electrically-conductive version, non-marking, grey	brake lever in special colour
Technical description page		50	
Product code suffix		LWKE-...-ELS	
Available for		all ball bearing versions*	upon request

* Load capacity of electrically conductive version reduced by 35%

LWG-TPA series

Blickle WAVE synthetic castors with bolt hole, colour silver grey, wheel with thermoplastic rubber tread



100–110 kg

-20 °C to +60 °C

Bracket: LWG series

- high-quality nylon 6, impact resistant
- encapsulated, double-sealed, grooved ball bearing in the swivel head
- bolt hole
- colour silver grey RAL 7001
- modern, appealing design

Wheel: TPA series

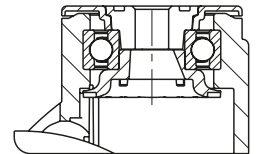
- tread: high-quality thermoplastic rubber-elastomer (TPE), hardness 85 Shore A, colour grey, non-marking, oil containing
- wheel centre: high-quality polypropylene, impact resistant, colour silver grey RAL 7001

Other features:

- the load capacity reduces at ambient temperatures above +30 °C

Additional details:

- bracket series: page 88
- brakes: page 112–113
- wheel series: page 60
- bearing types: page 84–85



Swivel castors	Swivel castors with "stop-fix" brake	Wheel Ø [mm]	Wheel width [mm]	Load capacity [kg]	Bearing type	Total height [mm]	Plate Ø [mm]	Bolt hole Ø [mm]	Offset swivel castor [mm]
LWG-TPA 101G	LWG-TPA 101G-FI	100	32	100	plain bore	135	55	13	38
LWG-TPA 101G-11	LWG-TPA 101G-11-FI	100	32	100	plain bore	135	55	11	38
LWG-TPA 101KF	LWG-TPA 101KF-FI	100	32	100	ball bearing (C)	135	55	13	38
LWG-TPA 101KF-11	LWG-TPA 101KF-11-FI	100	32	100	ball bearing (C)	135	55	11	38
LWG-TPA 126G	LWG-TPA 126G-FI	125	32	110	plain bore	160	55	13	40
LWG-TPA 126G-11	LWG-TPA 126G-11-FI	125	32	110	plain bore	160	55	11	40
LWG-TPA 126KF	LWG-TPA 126KF-FI	125	32	110	ball bearing (C)	160	55	13	40
LWG-TPA 126KF-11	LWG-TPA 126KF-11-FI	125	32	110	ball bearing (C)	160	55	11	40

For corrosion-resistant versions of synthetic castors, see page 165

Versions / options *



	plain bore version	electrically-conductive version, non-marking, grey	with "central-stop" central brake system	with threaded pin M10 x 20 M12 x 20	with synthetic expander fitting	with metal expander fitting	brake lever in special colour
Technical description page		50	113	104	105	105	
Product code suffix		LWGE-...-ELS	-CS11	-GS10 / -GS12	see page 168	see page 168	
Available for		all ball bearing versions**	all with bolt hole Ø 13 mm	all with bolt hole Ø 13 mm	bolt hole Ø 11 mm upon request***	bolt hole Ø 11 mm upon request****	upon request

* Other versions / options: buffers AW / AG / ARG series; rotating buffers -AMW / -AMG series see page 169 (technical information on page 116)

** Load capacity of electrically conductive version reduced by 35%

*** Not for electrically conductive version, Total height +3 mm

**** Total height +7 mm

LWG-TPA series

Blickle WAVE synthetic castors with top plate, colour silver grey, wheel with thermoplastic rubber tread



100–110 kg

-20 °C to +60 °C

Bracket: LWG series

- high-quality nylon 6, impact resistant
- encapsulated, double-sealed, grooved ball bearing in the swivel head
- zinc-plated blue-passivated steel top plate fitting (Cr6-free)
- colour silver grey RAL 7001
- modern, appealing design

Wheel: TPA series

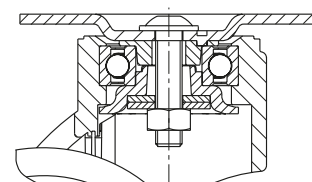
- tread: high-quality thermoplastic rubber-elastomer (TPE), hardness 85 Shore A, colour grey, non-marking, oil containing
- wheel centre: high-quality polypropylene, impact resistant, colour silver grey RAL 7001

Other features:

- the load capacity reduces at ambient temperatures above +30 °C

Additional details:

- bracket series: page 88
- brakes: page 112–113
- wheel series: page 60
- bearing types: page 84–85



Swivel castors	Swivel castors with "stop-fix" brake	Wheel Ø [mm]	Wheel width [mm]	Load capacity [kg]	Bearing type	Total height [mm]	Plate size [mm]	Bolt hole spacing [mm]	Bolt hole Ø [mm]	Offset swivel castor [mm]
LWG-TPA 101G-P25	LWG-TPA 101G-FI-P25	100	32	100	plain bore	138	90 x 66	75 x 45 / 61 x 51	8.5	38
LWG-TPA 101KF-P25	LWG-TPA 101KF-FI-P25	100	32	100	ball bearing (C)	138	90 x 66	75 x 45 / 61 x 51	8.5	38
LWG-TPA 126G-P25	LWG-TPA 126G-FI-P25	125	32	110	plain bore	163	90 x 66	75 x 45 / 61 x 51	8.5	40
LWG-TPA 126KF-P25	LWG-TPA 126KF-FI-P25	125	32	110	ball bearing (C)	163	90 x 66	75 x 45 / 61 x 51	8.5	40

For corrosion-resistant versions of synthetic castors, see page 166

Versions / options



	plain bore version	electrically-conductive version, non-marking, grey	with plate size 78x66 mm 61x50/50x42 mm	brake lever in special colour
Technical description page		50	106	
Product code suffix		LWGE-...-ELS	-P28	
Available for		all ball bearing versions*	upon request	upon request

* Load capacity of electrically conductive version reduced by 35%

LWG-TPA series

**Blickle WAVE synthetic castors,
with stem, colour silver grey,
wheel with thermoplastic rubber tread**



100–110 kg

-20 °C to +60 °C

Bracket: LWG series

- high-quality nylon 6, impact resistant
- encapsulated, double-sealed, grooved ball bearing in the swivel head
- zinc-plated, blue-passivated steel plug-in stem (Cr6-free), bolted and secured
- colour silver grey RAL 7001
- modern, appealing design

Wheel: TPA series

- tread: high-quality thermoplastic rubber-elastomer (TPE), hardness 85 Shore A, colour grey, non-marking, oil containing
- wheel centre: high-quality polypropylene, impact resistant, colour silver grey RAL 7001

Other features:

- the load capacity reduces at ambient temperatures above +30 °C

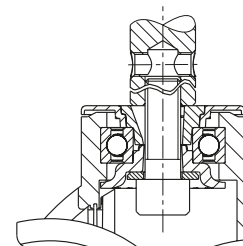
Additional details:

- bracket series: page 88
- brakes: page 112–113
- wheel series: page 60
- bearing types: page 84–85



BLICKLE
DESIGN LINE

2



Swivel castors	Swivel castors with "stop-fix" brake	Wheel Ø [mm]	Wheel width [mm]	Load capacity [kg]	Bearing type	Total height [mm]	Stem Ø [mm]	Stem length [mm]	Ø cross hole [mm]	Position cross hole (H) [mm]	Offset swivel castor [mm]
LWG-TPA 101G-ZA51	LWG-TPA 101G-FI-ZA51	100	32	100	plain bore	135	18	62	M6	30	38
LWG-TPA 101G-ZA55	LWG-TPA 101G-FI-ZA55	100	32	100	plain bore	135	22	45	M8	20	38
LWG-TPA 101KF-ZA51	LWG-TPA 101KF-FI-ZA51	100	32	100	ball bearing (C)	135	18	62	M6	30	38
LWG-TPA 101KF-ZA55	LWG-TPA 101KF-FI-ZA55	100	32	100	ball bearing (C)	135	22	45	M8	20	38
LWG-TPA 126G-ZA51	LWG-TPA 126G-FI-ZA51	125	32	110	plain bore	160	18	62	M6	30	40
LWG-TPA 126G-ZA55	LWG-TPA 126G-FI-ZA55	125	32	110	plain bore	160	22	45	M8	20	40
LWG-TPA 126KF-ZA51	LWG-TPA 126KF-FI-ZA51	125	32	110	ball bearing (C)	160	18	62	M6	30	40
LWG-TPA 126KF-ZA55	LWG-TPA 126KF-FI-ZA55	125	32	110	ball bearing (C)	160	22	45	M8	20	40

For corrosion-resistant versions of synthetic castors, see page 167
Additional stem fitting dimensions available upon request

Versions / options



	plain bore version	electrically-conductive version, non-marking, grey	brake lever in special colour
Technical description page		50	
Product code suffix		LWGE-...-ELS	
Available for		all ball bearing versions*	upon request

* Load capacity of electrically conductive version reduced by 35%

LWKX-TPA series

Blickle WAVE synthetic castors, corrosion-resistant, with bolt hole, colour grey white, wheel with thermoplastic rubber tread



100–110 kg

-20 °C to +60 °C

Bracket: LWKX series

- high-quality nylon 6, impact resistant
- moulded corrosion-resistant grooved ball bearing in the swivel head sealed on both sides
- bolt hole
- colour grey white RAL 9002
- all parts including axle material are corrosion-resistant
- modern, appealing design

Wheel: TPA series

- tread: high-quality thermoplastic rubber-elastomer (TPE), hardness 85 Shore A, colour grey, non-marking, oil containing
- wheel centre: high-quality polypropylene, impact resistant, colour grey white RAL 9002

Other features:

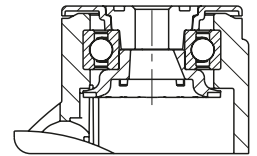
- the load capacity reduces at ambient temperatures above +30 °C

Additional details:

- bracket series: page 88
- brakes: page 112–113
- wheel series: page 60
- bearing types: page 84–85



2



Swivel castors	Swivel castors with "stop-fix" brake	Wheel Ø [mm]	Wheel width [mm]	Load capacity [kg]	Bearing type	Total height [mm]	Plate Ø [mm]	Bolt hole Ø [mm]	Offset swivel castor [mm]
LWKX-TPA 101G	LWKX-TPA 101G-FI	100	32	100	plain bore	135	55	13	38
LWKX-TPA 101G-11	LWKX-TPA 101G-11-FI	100	32	100	plain bore	135	55	11	38
LWKX-TPA 101XKF	LWKX-TPA 101XKF-FI	100	32	100	ball bearing (C)	135	55	13	38
LWKX-TPA 101XKF-11	LWKX-TPA 101XKF-11-FI	100	32	100	ball bearing (C)	135	55	11	38
LWKX-TPA 126G	LWKX-TPA 126G-FI	125	32	110	plain bore	160	55	13	40
LWKX-TPA 126G-11	LWKX-TPA 126G-11-FI	125	32	110	plain bore	160	55	11	40
LWKX-TPA 126XKF	LWKX-TPA 126XKF-FI	125	32	110	ball bearing (C)	160	55	13	40
LWKX-TPA 126XKF-11	LWKX-TPA 126XKF-11-FI	125	32	110	ball bearing (C)	160	55	11	40

Versions / options *



	plain bore version	electrically-conductive version, non-marking, grey	with threaded pin made from stainless steel M10 x 20	with threaded pin made from stainless steel M12 x 20	with synthetic expander fitting	brake lever in special colour
Technical description page		50	104	104	105	
Product code suffix		LWKXE-...-ELS	-GSX10	-GSX12	see page 168	
Available for		all ball bearing versions**	all with bolt hole Ø 13 mm	all with bolt hole Ø 13 mm	bolt hole Ø 11 mm upon request***	upon request

* Other versions / options: buffers AW / AG / ARG series; rotating buffers -AMWX / -AMGX series see page 169 (technical information on page 116)

** Load capacity of electrically conductive version reduced by 35%

*** Not for electrically conductive version, Total height +3 mm

LWKX-TPA series

Blickle WAVE synthetic castors, corrosion-resistant, with top plate, colour grey white, wheel with thermoplastic rubber tread



100–110 kg

-20 °C to +60 °C

Bracket: LWKX series

- high-quality nylon 6, impact resistant
- moulded corrosion-resistant grooved ball bearing in the swivel head sealed on both sides
- with top plate fitting made of stainless steel
- colour grey white RAL 9002
- all parts including axle material are corrosion-resistant
- modern, appealing design

Wheel: TPA series

- tread: high-quality thermoplastic rubber-elastomer (TPE), hardness 85 Shore A, colour grey, non-marking, oil containing
- wheel centre: high-quality polypropylene, impact resistant, colour grey white RAL 9002

Other features:

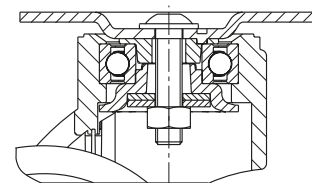
- the load capacity reduces at ambient temperatures above +30 °C

Additional details:

- bracket series: page 89
- brakes: page 112–113
- wheel series: page 60
- bearing types: page 84–85



2



Swivel castors	Swivel castors with "stop-fix" brake	Wheel Ø [mm]	Wheel width [mm]	Load capacity [kg]	Bearing type	Total height [mm]	Plate size [mm]	Bolt hole spacing [mm]	Bolt hole Ø [mm]	Offset swivel castor [mm]
LWKX-TPA 101G-PX25	LWKX-TPA 101G-FI-PX25	100	32	100	plain bore	138	90 x 66	75 x 45 / 61 x 51	8.5	38
LWKX-TPA 101XKF-PX25	LWKX-TPA 101XKF-FI-PX25	100	32	100	ball bearing (C)	138	90 x 66	75 x 45 / 61 x 51	8.5	38
LWKX-TPA 126G-PX25	LWKX-TPA 126G-FI-PX25	125	32	110	plain bore	163	90 x 66	75 x 45 / 61 x 51	8.5	40
LWKX-TPA 126XKF-PX25	LWKX-TPA 126XKF-FI-PX25	125	32	110	ball bearing (C)	163	90 x 66	75 x 45 / 61 x 51	8.5	40

Versions / options



	plain bore version	electrically-conductive version, non-marking, grey	with plate size 90x66 mm 75x50 mm	brake lever in special colour
Technical description page		50	106	
Product code suffix		LWKXE-...-ELS	-PX26	
Available for		all ball bearing versions*	upon request**	upon request

* Load capacity of electrically conductive version reduced by 35%
 ** In accordance with DIN 18867-8 (large-scale catering equipment)

LWKX-TPA series

Blickle WAVE synthetic castors, corrosion-resistant, with stem, colour grey white, wheel with thermoplastic rubber tread



100–110 kg

-20 °C to +60 °C

Bracket: LWKX series

- high-quality nylon 6, impact resistant
- moulded corrosion-resistant grooved ball bearing in the swivel head sealed on both sides
- with stainless steel plug-in stem, bolted and secured
- colour grey white RAL 9002
- all parts including axle material are corrosion-resistant
- modern, appealing design

Wheel: TPA series

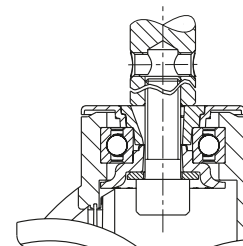
- tread: high-quality thermoplastic rubber-elastomer (TPE), hardness 85 Shore A, colour grey, non-marking, oil containing
- wheel centre: high-quality polypropylene, impact resistant, colour grey white RAL 9002

Other features:

- the load capacity reduces at ambient temperatures above +30 °C

Additional details:

- bracket series: page 89
- brakes: page 112–113
- wheel series: page 60
- bearing types: page 84–85



Swivel castors	Swivel castors with "stop-fix" brake	Wheel Ø [mm]	Wheel width [mm]	Load capacity [kg]	Bearing type	Total height [mm]	Stem Ø [mm]	Stem length [mm]	Ø cross hole [mm]	Position cross hole (H) [mm]	Offset swivel castor [mm]
LWKX-TPA 101G-ZAX51	LWKX-TPA 101G-FI-ZAX51	100	32	100	plain bore	135	18	62	M6	30	38
LWKX-TPA 101G-ZAX55	LWKX-TPA 101G-FI-ZAX55	100	32	100	plain bore	135	22	45	M8	20	38
LWKX-TPA 101XKF-ZAX51	LWKX-TPA 101XKF-FI-ZAX51	100	32	100	ball bearing (C)	135	18	62	M6	30	38
LWKX-TPA 101XKF-ZAX55	LWKX-TPA 101XKF-FI-ZAX55	100	32	100	ball bearing (C)	135	22	45	M8	20	38
LWKX-TPA 126G-ZAX51	LWKX-TPA 126G-FI-ZAX51	125	32	110	plain bore	160	18	62	M6	30	40
LWKX-TPA 126G-ZAX55	LWKX-TPA 126G-FI-ZAX55	125	32	110	plain bore	160	22	45	M8	20	40
LWKX-TPA 126XKF-ZAX51	LWKX-TPA 126XKF-FI-ZAX51	125	32	110	ball bearing (C)	160	18	62	M6	30	40
LWKX-TPA 126XKF-ZAX55	LWKX-TPA 126XKF-FI-ZAX55	125	32	110	ball bearing (C)	160	22	45	M8	20	40

Additional stem fitting dimensions available upon request

Versions / options



	plain bore version	electrically-conductive version, non-marking, grey	brake lever in special colour
Technical description page		50	
Product code suffix		LWKXE-...-ELS	
Available for		all ball bearing versions*	upon request

* Load capacity of electrically conductive version reduced by 35%

LWGX-TPA series

Blickle WAVE synthetic castors, corrosion-resistant, with bolt hole, colour silver grey, wheel with thermoplastic rubber tread



100–110 kg

-20 °C to +60 °C

Bracket: LWGX series

- high-quality nylon 6, impact resistant
- moulded corrosion-resistant grooved ball bearing in the swivel head sealed on both sides
- bolt hole
- colour silver grey RAL 7001
- all parts including axle material are corrosion-resistant
- modern, appealing design

Wheel: TPA series

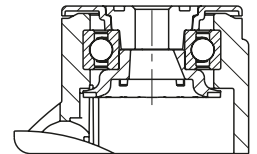
- tread: high-quality thermoplastic rubber-elastomer (TPE), hardness 85 Shore A, colour grey, non-marking, oil containing
- wheel centre: high-quality polypropylene, impact resistant, colour silver grey RAL 7001

Other features:

- the load capacity reduces at ambient temperatures above +30 °C

Additional details:

- bracket series: page 88
- brakes: page 112–113
- wheel series: page 60
- bearing types: page 84–85



Swivel castors	Swivel castors with "stop-fix" brake	Wheel Ø [mm]	Wheel width [mm]	Load capacity [kg]	Bearing type	Total height [mm]	Plate Ø [mm]	Bolt hole Ø [mm]	Offset swivel castor [mm]
LWGX-TPA 101G	LWGX-TPA 101G-FI	100	32	100	plain bore	135	55	13	38
LWGX-TPA 101G-11	LWGX-TPA 101G-11-FI	100	32	100	plain bore	135	55	11	38
LWGX-TPA 101XKF	LWGX-TPA 101XKF-FI	100	32	100	ball bearing (C)	135	55	13	38
LWGX-TPA 101XKF-11	LWGX-TPA 101XKF-11-FI	100	32	100	ball bearing (C)	135	55	11	38
LWGX-TPA 126G	LWGX-TPA 126G-FI	125	32	110	plain bore	160	55	13	40
LWGX-TPA 126G-11	LWGX-TPA 126G-11-FI	125	32	110	plain bore	160	55	11	40
LWGX-TPA 126XKF	LWGX-TPA 126XKF-FI	125	32	110	ball bearing (C)	160	55	13	40
LWGX-TPA 126XKF-11	LWGX-TPA 126XKF-11-FI	125	32	110	ball bearing (C)	160	55	11	40

Versions / options *



	plain bore version	electrically-conductive version, non-marking, grey	with threaded pin made from stainless steel M10 x 20	with threaded pin made from stainless steel M12 x 20	with synthetic expander fitting	brake lever in special colour
Technical description page		50	104	104	105	
Product code suffix		LWGXE-...-ELS	-GSX10	-GSX12	see page 168	
Available for		all ball bearing versions**	all with bolt hole Ø 13 mm	all with bolt hole Ø 13 mm	bolt hole Ø 11 mm upon request***	upon request

* Other versions / options: buffers AW / AG / ARG series; rotating buffers -AMWX / -AMGX series see page 169 (technical information on page 116)
 ** Load capacity of electrically conductive version reduced by 35%
 *** Not for electrically conductive version; Total height +3 mm

LWGX-TPA series

Blickle WAVE synthetic castors, corrosion-resistant, with top plate, colour silver grey, wheel with thermoplastic rubber tread



100–110 kg

-20 °C to +60 °C

Bracket: LWGX series

- high-quality nylon 6, impact resistant
- moulded corrosion-resistant grooved ball bearing in the swivel head sealed on both sides
- with top plate fitting made of stainless steel
- colour silver grey RAL 7001
- all parts including axle material are corrosion-resistant
- modern, appealing design

Wheel: TPA series

- tread: high-quality thermoplastic rubber-elastomer (TPE), hardness 85 Shore A, colour grey, non-marking, oil containing
- wheel centre: high-quality polypropylene, impact resistant, colour silver grey RAL 7001

Other features:

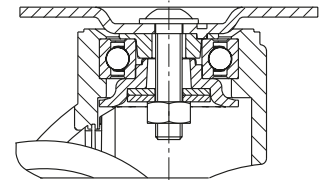
- the load capacity reduces at ambient temperatures above +30 °C

Additional details:

- bracket series: page 89
- brakes: page 112–113
- wheel series: page 60
- bearing types: page 84–85



2



Swivel castors	Swivel castors with "stop-fix" brake	Wheel Ø [mm]	Wheel width [mm]	Load capacity [kg]	Bearing type	Total height [mm]	Plate size [mm]	Bolt hole spacing [mm]	Bolt hole Ø [mm]	Offset swivel castor [mm]
LWGX-TPA 101G-PX25	LWGX-TPA 101G-FI-PX25	100	32	100	plain bore	138	90 x 66	75 x 45 / 61 x 51	8.5	38
LWGX-TPA 101XKF-PX25	LWGX-TPA 101XKF-FI-PX25	100	32	100	ball bearing (C)	138	90 x 66	75 x 45 / 61 x 51	8.5	38
LWGX-TPA 126G-PX25	LWGX-TPA 126G-FI-PX25	125	32	110	plain bore	163	90 x 66	75 x 45 / 61 x 51	8.5	40
LWGX-TPA 126XKF-PX25	LWGX-TPA 126XKF-FI-PX25	125	32	110	ball bearing (C)	163	90 x 66	75 x 45 / 61 x 51	8.5	40

Versions / options



	plain bore version	electrically-conductive version, non-marking, grey	with plate size 90x66 mm 75x50 mm	brake lever in special colour
Technical description page		50	106	
Product code suffix		LWGXE-...-ELS	-PX26	
Available for		all ball bearing versions*	upon request**	upon request

* Load capacity of electrically conductive version reduced by 35%
 ** In accordance with DIN 18867-8 (large-scale catering equipment)

LWGX-TPA series

Blickle WAVE synthetic castors, corrosion-resistant, with stem, colour silver grey, wheel with thermoplastic rubber tread



100–110 kg

-20 °C to +60 °C

Bracket: LWGX series

- high-quality nylon 6, impact resistant
- moulded corrosion-resistant grooved ball bearing in the swivel head sealed on both sides
- with stainless steel plug-in stem, bolted and secured
- colour silver grey RAL 7001
- all parts including axle material are corrosion-resistant
- modern, appealing design

Wheel: TPA series

- tread: high-quality thermoplastic rubber-elastomer (TPE), hardness 85 Shore A, colour grey, non-marking, oil containing
- wheel centre: high-quality polypropylene, impact resistant, colour silver grey RAL 7001

Other features:

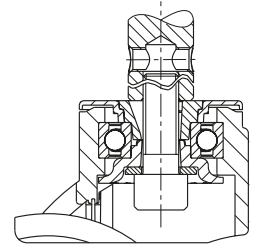
- the load capacity reduces at ambient temperatures above +30 °C

Additional details:

- bracket series: page 89
- brakes: page 112–113
- wheel series: page 60
- bearing types: page 84–85



2



Swivel castors	Swivel castors with "stop-fix" brake	Wheel Ø [mm]	Wheel width [mm]	Load capacity [kg]	Bearing type	Total height [mm]	Stem Ø [mm]	Stem length [mm]	Ø cross hole [mm]	Position cross hole (H) [mm]	Offset swivel castor [mm]
LWGX-TPA 101G-ZAX51	LWGX-TPA 101G-FI-ZAX51	100	32	100	plain bore	135	18	62	M6	30	38
LWGX-TPA 101G-ZAX55	LWGX-TPA 101G-FI-ZAX55	100	32	100	plain bore	135	22	45	M8	20	38
LWGX-TPA 101XKF-ZAX51	LWGX-TPA 101XKF-FI-ZAX51	100	32	100	ball bearing (C)	135	18	62	M6	30	38
LWGX-TPA 101XKF-ZAX55	LWGX-TPA 101XKF-FI-ZAX55	100	32	100	ball bearing (C)	135	22	45	M8	20	38
LWGX-TPA 126G-ZAX51	LWGX-TPA 126G-FI-ZAX51	125	32	110	plain bore	160	18	62	M6	30	40
LWGX-TPA 126G-ZAX55	LWGX-TPA 126G-FI-ZAX55	125	32	110	plain bore	160	22	45	M8	20	40
LWGX-TPA 126XKF-ZAX51	LWGX-TPA 126XKF-FI-ZAX51	125	32	110	ball bearing (C)	160	18	62	M6	30	40
LWGX-TPA 126XKF-ZAX55	LWGX-TPA 126XKF-FI-ZAX55	125	32	110	ball bearing (C)	160	22	45	M8	20	40

Additional stem fitting dimensions available upon request

Versions / options



	plain bore version	electrically-conductive version, non-marking, grey	brake lever in special colour
Technical description page		50	
Product code suffix		LWGXE-...-ELS	
Available for		all ball bearing versions*	upon request

* Load capacity of electrically conductive version reduced by 35%

2 Versions / options for Blickle WAVE synthetic castors

“central-stop” central brake with stem

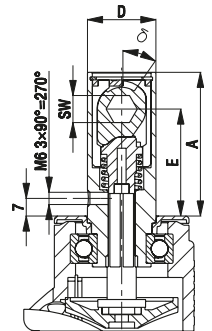
Product code suffix	Stem height	Operating angle	Stem Ø	Clearance between top plate and centre of hexagon	Width across flats
	(A) [mm]	(Ø)	(D) [mm]	(E) [mm]	(SW) [mm]
-CS11	58.5	35 °	28	43.5	11

This brake system provides friction-locking for the swivel head and wheel. It is actuated using a central lever that connects to the brake linkage on the unit.

The advantages at a glance:

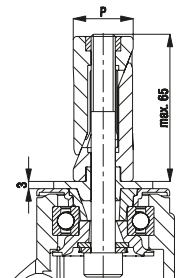
- Small operating angle with little force required to actuate and release the brake.
- Space-saving design with brake mechanism integrated into the zinc-plated stem, blue-passivated, Cr6-free.
- Central actuation of two to four castors possible using brake linkage. This provides a high level of flexibility in terms of how the brake lever is designed and positioned.
- The friction-locking ensures that the brake is not damaged if the brake forces are exceeded.

Available for all Blickle WAVE synthetic castors (with the exception of the corrosion-resistant version).



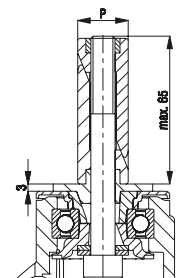
Synthetic expander fitting for round tubes

Product code suffix	Product code suffix corrosion-resistant version	Internal tube dimension (P) [mm]	Available for all Blickle WAVE synthetic castors with bolt hole Ø 11 mm with the exception of the electrically conductive version. Castor and expander secured to prevent loosening with positive locking. Maximum fitting length is 65 mm. Increases total height of castors by 3 mm. Detailed description: page 105
-ER52	-EXR52	Ø 20–25	
-ER53	-EXR53	Ø 25–30	
-ER54	-EXR54	Ø 30–35	
-ER55	-EXR55	Ø 35–40	



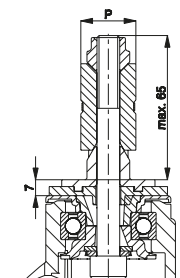
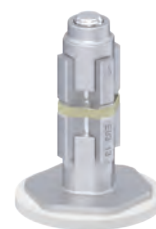
Synthetic expander fitting for square tubes

Product code suffix	Product code suffix corrosion-resistant version	Internal tube dimension (P) [mm]	Available for all Blickle WAVE synthetic castors with bolt hole Ø 11 mm with the exception of the electrically conductive version. Castor and expander secured to prevent loosening with positive locking. Maximum fitting length is 65 mm. Increases total height of castors by 3 mm. Detailed description: page 105
-EV52	-EXV52	□ 18–21	
-EV53	-EXV53	□ 21–25	
-EV54	-EXV54	□ 25–29	
-EV55	-EXV55	□ 29–32	
-EV57	-EXV57	□ 32–38.5	



Metal expander fitting for round and square tubes

Product code suffix	Internal tube dimension round tube (P) [mm]	Internal tube dimension square tube (P) [mm]	Available for all Blickle WAVE synthetic castors with bolt hole Ø 11 mm with the exception of the corrosion-resistant version. Castor and expander secured to prevent loosening with positive locking. Maximum fitting length is 65 mm. Increases total height of castors by 7 mm. Detailed description: page 105
-E51	Ø 17–19	□ 17–19	
-E52	Ø 20–25	□ 18–21	
-E53	Ø 25–30	□ 21–25	
-E54	Ø 30–35	□ 25–29	
-E55	Ø 35–40	□ 29–32	
-E57	Ø 39–45	□ 32–38.5	



Versions / options for Blickle WAVE synthetic castors

Buffers for round and square tubes

Product code Synthetic (Polyethylene)	Product code Solid rubber	Wheel Ø (D) [mm]	Wheel width (T1) [mm]	Hole (d) [mm]
Colour grey white				
AW 100/R25		100	17.5	Ø 25
AW 100/V25		100	17.5	□ 25 x 25
AW 125/R25		125	17.5	Ø 25
AW 125/V25		125	17.5	□ 25 x 25
Colour silver grey				
AG 100/R25		100	17.5	Ø 25
AG 100/V25		100	17.5	□ 25 x 25
AG 125/R25		125	17.5	Ø 25
AG 125/V25		125	17.5	□ 25 x 25
Colour grey				
	ARG 75/R10	75	23	Ø 10
	ARG 100/R26	100	23	Ø 26
	ARG 100/R32	100	23	Ø 32
	ARG 125/R26	125	23	Ø 26
	ARG 125/R32	125	23	Ø 32

Buffers reduce the risk of damage to walls and vehicles in the event of a collision. Buffers for round and square tubes are fixed or connected to tubular frames in the external areas of vehicles.

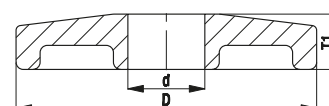
AW/AG series:

Made from soft synthetic polyethylene, hardness 48 Shore D, non-marking, colour grey white RAL 9002 (**AW**) or colour silver grey RAL 7001 (**AG**).

ARG series:

Made from solid rubber, hardness 75 Shore A, colour grey (similar to RAL 7001), non-marking.

Detailed description: Page 116



Synthetic rotating buffers (polyethylene)

Product code suffix Zinc-plated bolt	Product code suffix Corrosion-resistant bolt	Wheel Ø (D) [mm]	Wheel width (T1) [mm]	Threaded pin (Ø x height) (d x Q) [mm]
Colour grey white				
-AMW100	-AMWX100	100	17.5	M10 x 27
-AMW125	-AMWX125	125	17.5	M10 x 27
Colour silver grey				
-AMG100	-AMGX100	100	17.5	M10 x 27
-AMG125	-AMGX125	125	17.5	M10 x 27

Other dimensions and special colours available upon request.

Buffers reduce the risk of damage to walls and vehicles in the event of a collision. Rotating buffers prevent grinding against walls in the event of a collision.

-AMW/-AMG series:

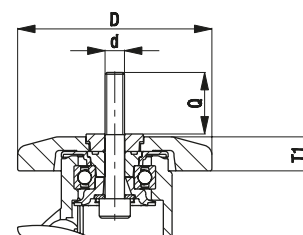
Made of soft polyethylene, hardness 48 Shore D, non-marking, with high strength synthetic plain bore bush, colour grey white RAL 9002 (**-AMW**) or colour silver grey RAL 7001 (**-AMG**). Buffers are connected directly to the synthetic castors using a zinc-plated (**-AMW/-AMG**) or corrosion-resistant (**-AMWX/-AMGX**) DIN 912 bolt.

Synthetic castors with rotating buffers are fitted to the unit with the protruding bolt (threaded pin).

Available for all Blickle WAVE synthetic castors with Ø 11 mm bolt hole.

Increases total height of castors by 9 mm.

Detailed description: page 116



LKDG-PUA series

**Twin synthetic castors,
colour light grey, wheels with
thermoplastic polyurethane tread**

110 kg

-20 °C to +70 °C



Bracket: LKDG series

- high-quality nylon 6, impact resistant
- high-quality synthetic plain bore in the swivel head
- zinc-plated steel threaded pin
- colour light grey RAL 7035

Wheel: PUA series

- tread: high-quality thermoplastic polyurethane (TPU), hardness 92 Shore A, colour black, non-marking, non-staining
- wheel centre: high-quality nylon 6, impact resistant, colour light grey RAL 7035

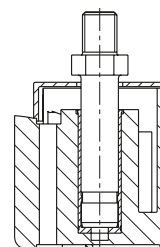
Other features:

- operating temperature: temporarily up to +80 °C
- the load capacity reduces at ambient temperatures above +30 °C

Additional details:

- bracket series: page 89
- brakes: page 112–113
- bearing types: page 84–85

**BLICKLE
DESIGN LINE**



2



Swivel castors	Swivel castors with "Radstop" brake	Wheel Ø [mm]	Wheel width [mm]	Total castor width [mm]	Load capacity [kg]	Bearing type	Total height incl. hexagon [mm]	Threaded pin [mm]	Offset swivel castor [mm]
LKDG-PUA 100G	LKDG-PUA 100G-RA	100	2 x 19	63	110	plain bore	121	M12 x 20	33

Versions / options



	with zinc-plated steel top plate fitting 60x60 mm 40x40/46x46 mm	stainless steel version	in special colour
Technical description page	106		
Product code suffix	-P23		
Available for	all*	upon request	upon request

* Total height +2 mm

LKDB-PUA series

**Twin synthetic castors,
colour black, wheels with
thermoplastic polyurethane tread**



50–110 kg

-20 °C to +70 °C

Bracket: LKDB series

- high-quality nylon 6, impact resistant
- high-quality synthetic plain bore in the swivel head
- zinc-plated steel threaded pin
- colour black RAL 9005

Wheel: PUA series

- tread: high-quality thermoplastic polyurethane (TPU), hardness 92 Shore A, colour black, non-marking, non-staining
- wheel centre: high-quality nylon 6, impact resistant, colour black RAL 9005

Other features:

- operating temperature: temporarily up to +80 °C
- the load capacity reduces at ambient temperatures above +30 °C

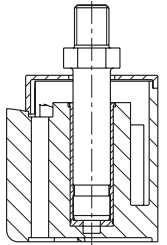
Additional details:

- bracket series: page 89
- brakes: page 112–113
- bearing types: page 84–85



**BLICKLE
DESIGN LINE**

2



Swivel castors	Swivel castors with "Radstop" brake	Wheel Ø [mm]	Wheel width [mm]	Total castor width [mm]	Load capacity [kg]	Bearing type	Total height incl. hexagon [mm]	Threaded pin [mm]	Offset swivel castor [mm]
LKDB-PUA 50G	LKDB-PUA 50G-RA	50	2 x 12	51	50	plain bore	61	M8 x 15	20
LKDB-PUA 75G	LKDB-PUA 75G-RA	75	2 x 15	55	75	plain bore	83	M10 x 15	24
LKDB-PUA 100G	LKDB-PUA 100G-RA	100	2 x 19	63	110	plain bore	121	M12 x 20	33

Castors are not approved for office chairs.

Versions / options



image LKDB-PUA 50G-RA	electrically conductive version, colour black, non-marking, hardness 98 Shore A	with plug-in pin Ø 11 x 19.5	with zinc-plated steel top plate fitting 38x38 mm 25x25/27x27 mm	with zinc-plated steel top plate fitting 60x60 mm 40x40/46x46 mm	stainless steel version	in special colour
Technical description page	50	105	106	106		
Product code suffix	-ELS	-ES	-P20	-P23		
Available for	all	wheel Ø 50–75 mm*	wheel Ø 50–75 mm**	wheel Ø 75–100 mm***	upon request	upon request

* Total height -3 mm

** Total height +5 mm

*** Total height wheel Ø 75 +5 mm, wheel Ø 100 +2 mm

LKD-PATH series

Blickle MOVE twin synthetic castors with bolt hole, colour grey white, wheel with thermoplastic polyurethane tread



100–125 kg

-20 °C to +60 °C

Bracket: LKD series

- high-quality nylon 6, impact resistant
- two grooved ball bearings in the swivel head sealed on both sides
- bolt hole
- colour grey white RAL 9002
- modern, appealing design

Wheel: PATH series

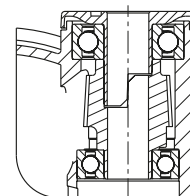
- tread: high-quality thermoplastic polyurethane (TPU), hardness 94 Shore A, colour dark grey, non-marking, non-staining
- wheel centre: high-quality nylon 6, impact resistant, colour grey white RAL 9002

Other features:

- the load capacity reduces at ambient temperatures above +30 °C

Additional details:

- bracket series: page 89
- brakes: page 112–113
- wheel series: page 61
- bearing types: page 84–85



Swivel castors	Swivel castors with "stop-fix" brake	Wheel Ø [mm]	Wheel width [mm]	Total castor width [mm]	Load capacity [kg]	Bearing type	Total height [mm]	Plate Ø [mm]	Bolt hole Ø [mm]	Offset swivel castor [mm]
LKD-PATH 100K	LKD-PATH 100K-FI	100	2 x 18	80	100	ball bearing	103	42	13	31
LKD-PATH 100K-11	LKD-PATH 100K-11-FI	100	2 x 18	80	100	ball bearing	103	42	11	31
LKD-PATH 100K-9	LKD-PATH 100K-9-FI	100	2 x 18	80	100	ball bearing	103	42	9	31
LKD-PATH 125K	LKD-PATH 125K-FI	125	2 x 20	80	125	ball bearing	130	45	13	40
LKD-PATH 125K-11	LKD-PATH 125K-11-FI	125	2 x 20	80	125	ball bearing	130	45	11	40

For corrosion-resistant versions of twin synthetic castors, see page 176

Swivel castor with "stop-fix" brake with easy release kick lever as standard



Versions / options *



	electrically-conductive version, non-marking grey	with combined wheel brake and directional lock (1 x 360°)	castor with special mounting height 121 / 135 mm	with threaded pin M10 x 20 M12 x 20	wheel Ø 150 mm	with top plate fitting	in special colour
Technical description page	50	115		104		106	
Product code suffix	-ELS	-RIFI	LKDH-...	-GS10 / -GS12		-P25 / -P26	
Available for	all	wheel Ø 125 mm	wheel Ø 100 / 125 mm	all with bolt hole Ø 13 mm	upon request	upon request**	upon request

* Other versions / options: expander fitting for all castors with bolt hole Ø 11 mm upon request (with exception of LKDH version), total height +5 mm, see page 180

** Increases total height of castors by 8 mm

LKD-PATH series

Blickle MOVE twin synthetic castors with stem, colour grey white, wheel with thermoplastic polyurethane tread



100–125 kg

-20 °C to +60 °C

Bracket: LKD series

- high-quality nylon 6, impact resistant
- two grooved ball bearings in the swivel head sealed on both sides
- zinc-plated, blue-passivated steel plug-in stem (Cr6-free), bolted and secured
- colour grey white RAL 9002
- modern, appealing design

Wheel: PATH series

- tread: high-quality thermoplastic polyurethane (TPU), hardness 94 Shore A, colour dark grey, non-marking, non-staining
- wheel centre: high-quality nylon 6, impact resistant, colour grey white RAL 9002

Other features:

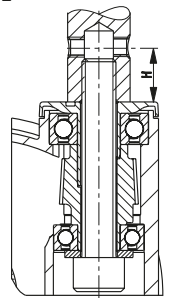
- the load capacity reduces at ambient temperatures above +30 °C

Additional details:

- bracket series: page 90
- brakes: page 112–113
- wheel series: page 61
- bearing types: page 84–85



BLICKLE DESIGN LINE



2

Swivel castors	Swivel castors with "stop-fix" brake	Wheel Ø [mm]	Wheel width [mm]	Total castor width [mm]	Load capacity [kg]	Bearing type	Total height [mm]	Stem Ø [mm]	Stem length [mm]	Ø cross hole [mm]	Position cross hole (H) [mm]	Offset swivel castor [mm]
LKD-PATH 100K-ZA51	LKD-PATH 100K-FI-ZA51	100	2 x 18	80	100	ball bearing	103	18	62	M6	30	31
LKD-PATH 100K-ZA55	LKD-PATH 100K-FI-ZA55	100	2 x 18	80	100	ball bearing	103	22	45	M8	20	31
LKD-PATH 125K-ZA51	LKD-PATH 125K-FI-ZA51	125	2 x 20	80	125	ball bearing	130	18	62	M6	30	40
LKD-PATH 125K-ZA55	LKD-PATH 125K-FI-ZA55	125	2 x 20	80	125	ball bearing	130	22	45	M8	20	40

For corrosion-resistant versions of twin synthetic castors, see page 177
Swivel castor with "stop-fix" brake with easy release kick lever as standard



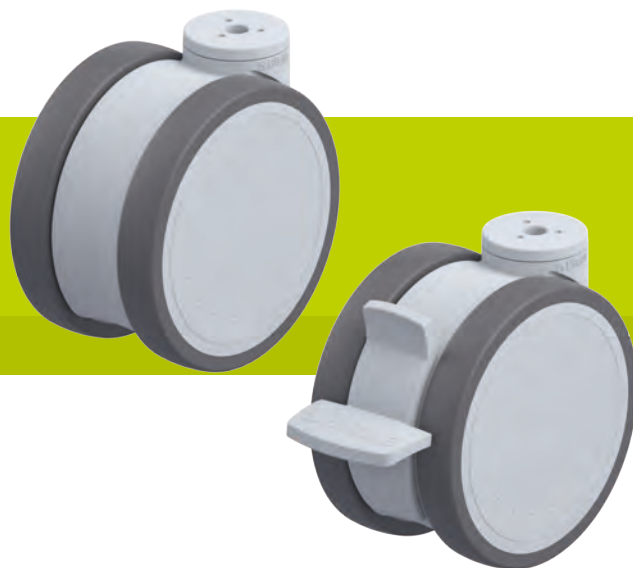
Versions / options



	electrically conductive version, non-marking grey	with combined wheel brake and directional lock (1 x 360°)	castor with special mounting height 121 / 135 mm	wheel Ø 150 mm	in special colour
Technical description page	50	115			
Product code suffix	-ELS	-RIFI	LKDH-...		
Available for	all	wheel Ø 125 mm	wheel Ø 100 / 125 mm	upon request	upon request

LKDG-PATH series

Blickle MOVE twin synthetic castors with bolt hole, colour silver grey, wheel with thermoplastic polyurethane tread



100–125 kg

-20 °C to +60 °C

Bracket: LKDG series

- high-quality nylon 6, impact resistant
- two grooved ball bearings in the swivel head sealed on both sides
- bolt hole
- colour silver grey RAL 7001
- modern, appealing design

Wheel: PATH series

- tread: high-quality thermoplastic polyurethane (TPU), hardness 94 Shore A, colour dark grey, non-marking, non-staining
- wheel centre: high-quality nylon 6, impact resistant, colour silver grey RAL 7001

Other features:

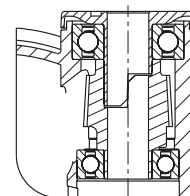
- the load capacity reduces at ambient temperatures above +30 °C

Additional details:

- bracket series: page 89
- brakes: page 112–113
- wheel series: page 61
- bearing types: page 84–85



2



Swivel castors	Swivel castors with "stop-fix" brake	Wheel Ø [mm]	Wheel width [mm]	Total castor width [mm]	Load capacity [kg]	Bearing type	Total height [mm]	Plate Ø [mm]	Bolt hole Ø [mm]	Offset swivel castor [mm]
LKDG-PATH 100K	LKDG-PATH 100K-FI	100	2 x 18	80	100	ball bearing	103	42	13	31
LKDG-PATH 100K-11	LKDG-PATH 100K-11-FI	100	2 x 18	80	100	ball bearing	103	42	11	31
LKDG-PATH 100K-9	LKDG-PATH 100K-9-FI	100	2 x 18	80	100	ball bearing	103	42	9	31
LKDG-PATH 125K	LKDG-PATH 125K-FI	125	2 x 20	80	125	ball bearing	130	45	13	40
LKDG-PATH 125K-11	LKDG-PATH 125K-11-FI	125	2 x 20	80	125	ball bearing	130	45	11	40

For corrosion-resistant versions of twin synthetic castors, see page 178

Swivel castor with "stop-fix" brake with easy release kick lever as standard



Versions / options *



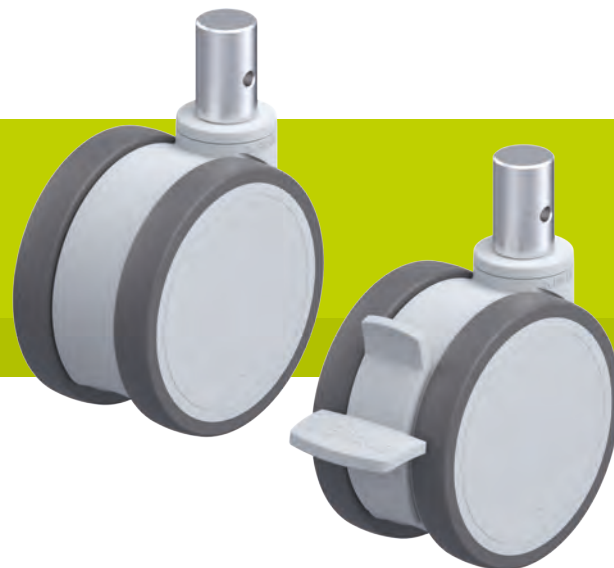
	electrically conductive version, non-marking	with combined wheel brake and directional lock (1 x 360°)	castor with special mounting height 121 / 135 mm	with threaded pin M10 x 20 M12 x 20	wheel Ø 150 mm	with top plate fitting	in special colour
Technical description page	50	115		104		106	
Product code suffix	-ELS	-RIFI	LKDGH-...	-GS10 / -GS12		-P25 / -P26	
Available for	all	wheel Ø 125 mm	wheel Ø 100 / 125 mm	all with bolt hole Ø 13 mm	upon request	upon request**	upon request

* Other versions / options: expander fitting for all castors with bolt hole Ø 11 mm upon request (with exception of LKDGH version), total height +5 mm, see page 180

** Increases total height of castors by 8 mm

LKDG-PATH series

Blickle MOVE twin synthetic castors with stem, colour silver grey, wheel with thermoplastic polyurethane tread



100–125 kg

-20 °C to +60 °C

Bracket: LKDG series

- high-quality nylon 6, impact resistant
- two grooved ball bearings in the swivel head sealed on both sides
- zinc-plated, blue-passivated steel plug-in stem (Cr6-free), bolted and secured
- colour silver grey RAL 7001
- modern, appealing design

Wheel: PATH series

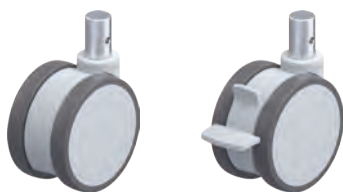
- tread: high-quality thermoplastic polyurethane (TPU), hardness 94 Shore A, colour dark grey, non-marking, non-staining
- wheel centre: high-quality nylon 6, impact resistant, colour silver grey RAL 7001

Other features:

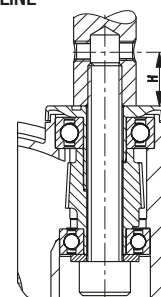
- the load capacity reduces at ambient temperatures above +30 °C

Additional details:

- bracket series: page 89
- brakes: page 112–113
- wheel series: page 61
- bearing types: page 84–85



BLICKLE DESIGN LINE



2

Swivel castors	Swivel castors with "stop-fix" brake	Wheel Ø [mm]	Wheel width [mm]	Total castor width [mm]	Load capacity [kg]	Bearing type	Total height [mm]	Stem Ø [mm]	Stem length [mm]	Ø cross hole [mm]	Position cross hole (H) [mm]	Offset swivel castor [mm]
LKDG-PATH 100K-ZA51	LKDG-PATH 100K-FI-ZA51	100	2 x 18	80	100	ball bearing	103	18	62	M6	30	31
LKDG-PATH 100K-ZA55	LKDG-PATH 100K-FI-ZA55	100	2 x 18	80	100	ball bearing	103	22	45	M8	20	31
LKDG-PATH 125K-ZA51	LKDG-PATH 125K-FI-ZA51	125	2 x 80	80	125	ball bearing	130	18	62	M6	30	40
LKDG-PATH 125K-ZA55	LKDG-PATH 125K-FI-ZA55	125	2 x 80	80	125	ball bearing	130	22	45	M8	20	40

For corrosion-resistant versions of twin synthetic castors, see page 179
Swivel castor with "stop-fix" brake with easy release kick lever as standard



Versions / options



	electrically conductive version, non-marking grey	with combined wheel brake and directional lock (1 x 360°)	castor with special mounting height 121 / 135 mm	wheel Ø 150 mm	in special colour
Technical description page	50	115			
Product code suffix	-ELS	-RIFI	LKDGH-...		
Available for	all	wheel Ø 125 mm	wheel Ø 100 / 125 mm	upon request	upon request

LKDX-PATH series

Blickle MOVE twin synthetic castors, corrosion-resistant, with bolt hole, colour grey white, wheel with thermoplastic polyurethane tread



100–125 kg

-20 °C to +60 °C

Bracket: LKDX series

- high-quality nylon 6, impact resistant
- two corrosion-resistant grooved ball bearings in swivel head sealed on both sides
- bolt hole
- colour grey white RAL 9002
- all parts including axle material are corrosion-resistant
- modern, appealing design

Wheel: PATH series

- tread: high-quality thermoplastic polyurethane (TPU), hardness 94 Shore A, colour dark grey, non-marking, non-staining
- wheel centre: high-quality nylon 6, impact resistant, colour grey white RAL 9002

Other features:

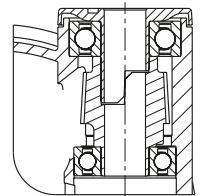
- the load capacity reduces at ambient temperatures above +30 °C

Additional details:

- bracket series: page 90
- brakes: page 112–113
- wheel series: page 61
- bearing types: page 84–85



2



Swivel castors	Swivel castors with "stop-fix" brake	Wheel Ø [mm]	Wheel width [mm]	Total castor width [mm]	Load capacity [kg]	Bearing type	Total height [mm]	Plate Ø [mm]	Bolt hole Ø [mm]	Offset swivel castor [mm]
LKDX-PATH 100XK	LKDX-PATH 100XK-FI	100	2 x 18	80	100	ball bearing	103	42	13	31
LKDX-PATH 100XK-11	LKDX-PATH 100XK-11-FI	100	2 x 18	80	100	ball bearing	103	42	11	31
LKDX-PATH 100XK-9	LKDX-PATH 100XK-9-FI	100	2 x 18	80	100	ball bearing	103	42	9	31
LKDX-PATH 125XK	LKDX-PATH 125XK-FI	125	2 x 20	80	125	ball bearing	130	45	13	40
LKDX-PATH 125XK-11	LKDX-PATH 125XK-11-FI	125	2 x 20	80	125	ball bearing	130	45	11	40

Swivel castor with "stop-fix" brake with easy release kick lever as standard



Versions / options *



	electrically conductive version, non-marking	with combined wheel brake and directional lock (1 x 360°)	castor with special mounting height 121 / 135 mm	with threaded pin made from stainless steel M10 x 20 / M12 x 20	wheel Ø 150 mm	with stainless steel top plate fitting	in special colour
Technical description page	50	115		104		106	
Product code suffix	-ELS	-RIFI	LKDXH-...	-GSX10 / -GSX12		-PX25 / -PX26	
Available for	all	wheel Ø 125 mm	wheel Ø 100 / 125 mm	all with bolt hole Ø 13 mm	upon request	upon request**	upon request

* Other versions / options: expander fitting for all castors with bolt hole Ø 11 mm upon request (with exception of LKDXH version), total height +5 mm, see page 180

** Increases total height of castors by 8 mm

LKDX-PATH series

Blickle MOVE twin synthetic castors, corrosion-resistant, with stem, colour grey white, wheel with thermoplastic polyurethane tread



100–125 kg

-20 °C to +60 °C

Bracket: LKDX series

- high-quality nylon 6, impact resistant
- two corrosion-resistant grooved ball bearings in swivel head sealed on both sides
- with stainless steel plug-in stem, bolted and secured
- colour grey white RAL 9002
- all parts including axle material are corrosion-resistant
- modern, appealing design

Wheel: PATH series

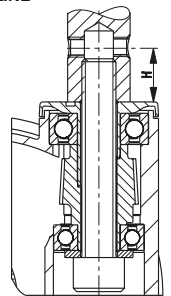
- tread: high-quality thermoplastic polyurethane (TPU), hardness 94 Shore A, colour dark grey, non-marking, non-staining
- wheel centre: high-quality nylon 6, impact resistant, colour grey white RAL 9002

Other features:

- the load capacity reduces at ambient temperatures above +30 °C

Additional details:

- bracket series: page 90
- brakes: page 112–113
- wheel series: page 61
- bearing types: page 84–85



Swivel castors	Swivel castors with "stop-fix" brake	Wheel Ø [mm]	Wheel width [mm]	Total castor width [mm]	Load capacity [kg]	Bearing type	Total height [mm]	Stem Ø [mm]	Stem length [mm]	Ø cross hole [mm]	Position cross hole (H) [mm]	Offset swivel castor [mm]
LKDX-PATH 100XK-ZAX51	LKDX-PATH 100XK-FI-ZAX51	100	2 x 18	80	100	ball bearing	103	18	62	M6	30	31
LKDX-PATH 100XK-ZAX55	LKDX-PATH 100XK-FI-ZAX55	100	2 x 18	80	100	ball bearing	103	22	45	M8	20	31
LKDX-PATH 125XK-ZAX51	LKDX-PATH 125XK-FI-ZAX51	125	2 x 20	80	125	ball bearing	130	18	62	M6	30	40
LKDX-PATH 125XK-ZAX55	LKDX-PATH 125XK-FI-ZAX55	125	2 x 20	80	125	ball bearing	130	22	45	M8	20	40

Swivel castor with "stop-fix" brake with easy release kick lever as standard



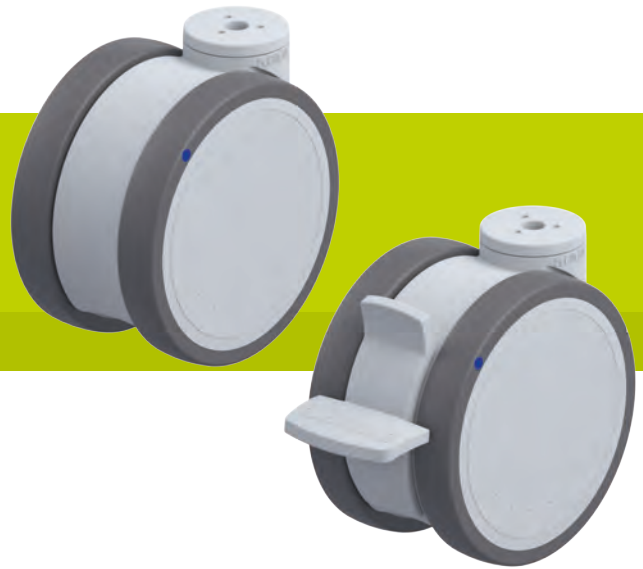
Versions / options



	electrically conductive version, non-marking	with combined wheel brake and directional lock (1 x 360°)	castor with special mounting height 121 / 135 mm	wheel Ø 150 mm	in special colour
Technical description page	50	115			
Product code suffix	-ELS	-RIFI	LKDXH-...		
Available for	all	wheel Ø 125 mm	wheel Ø 100 / 125 mm	upon request	upon request

LKDGX-PATH series

Blickle MOVE twin synthetic castors, corrosion-resistant, with bolt hole, colour silver grey, wheel with thermoplastic polyurethane tread



100–125 kg

-20 °C to +60 °C

Bracket: LKDGX series

- high-quality nylon 6, impact resistant
- two corrosion-resistant grooved ball bearings in swivel head sealed on both sides
- bolt hole
- colour silver grey RAL 7001
- all parts including axle material are corrosion-resistant
- modern, appealing design

Wheel: PATH series

- tread: high-quality thermoplastic polyurethane (TPU), hardness 94 Shore A, colour dark grey, non-marking, non-staining
- wheel centre: high-quality nylon 6, impact resistant, colour silver grey RAL 7001

Other features:

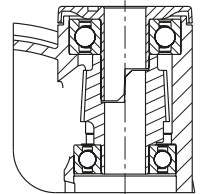
- the load capacity reduces at ambient temperatures above +30 °C

Additional details:

- bracket series: page 90
- brakes: page 112–113
- wheel series: page 61
- bearing types: page 84–85



2



Swivel castors	Swivel castors with "stop-fix" brake	Wheel Ø [mm]	Wheel width [mm]	Total castor width [mm]	Load capacity [kg]	Bearing type	Total height [mm]	Plate Ø [mm]	Bolt hole Ø [mm]	Offset swivel castor [mm]
LKDGX-PATH 100XK	LKDGX-PATH 100XK-FI	100	2 x 18	80	100	ball bearing	103	42	13	31
LKDGX-PATH 100XK-11	LKDGX-PATH 100XK-11-FI	100	2 x 18	80	100	ball bearing	103	42	11	31
LKDGX-PATH 100XK-9	LKDGX-PATH 100XK-9-FI	100	2 x 18	80	100	ball bearing	103	42	9	31
LKDGX-PATH 125XK	LKDGX-PATH 125XK-FI	125	2 x 20	80	125	ball bearing	130	45	13	40
LKDGX-PATH 125XK-11	LKDGX-PATH 125XK-11-FI	125	2 x 20	80	125	ball bearing	130	45	11	40

Swivel castor with "stop-fix" brake with easy release kick lever as standard



Versions / options *

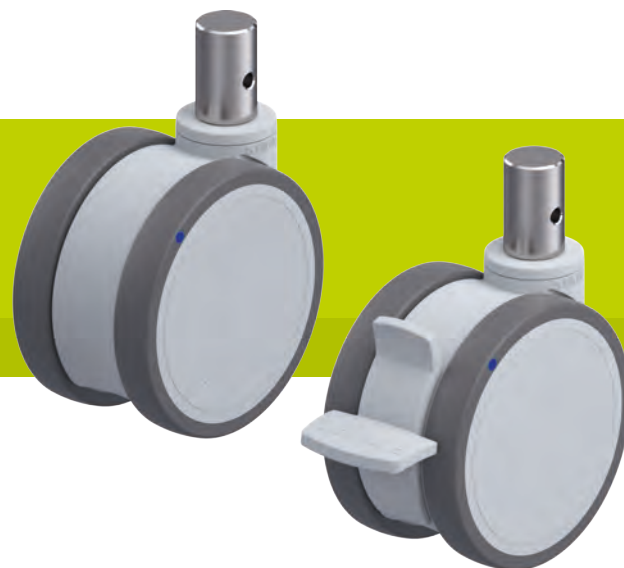


	electrically conductive version, non-marking	with combined wheel brake and directional lock (1 x 360°)	castor with special mounting height 121 / 135 mm	with threaded pin made from stainless steel M10 x 20 / M12 x 20	wheel Ø 150 mm	with stainless steel top plate fitting	in special colour
Technical description page	50	115		104		106	
Product code suffix	-ELS	-RIFI	LKDGXH-...	-GSX10 / -GSX12		-PX25 / -PX26	
Available for	all	wheel Ø 125 mm	wheel Ø 100 / 125 mm	all with bolt hole Ø 13 mm	upon request	upon request	upon request

* Other versions / options: expander fitting for all castors with bolt hole Ø 11 mm upon request (with exception of LKDGXH version), total height +5 mm, see page 180

LKDGX-PATH series

Blickle MOVE twin synthetic castors, corrosion-resistant, with stem, colour silver grey, wheel with thermoplastic polyurethane tread



100–125 kg

-20 °C to +60 °C

Bracket: LKDGX series

- high-quality nylon 6, impact resistant
- two corrosion-resistant grooved ball bearings in swivel head sealed on both sides
- with stainless steel plug-in stem, bolted and secured
- colour silver grey RAL 7001
- all parts including axle material are corrosion-resistant
- modern, appealing design

Wheel: PATH series

- tread: high-quality thermoplastic polyurethane (TPU), hardness 94 Shore A, colour dark grey, non-marking, non-staining
- wheel centre: high-quality nylon 6, impact resistant, colour silver grey RAL 7001

Other features:

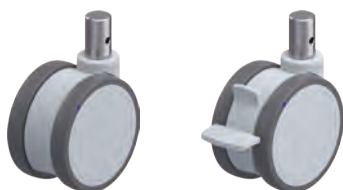
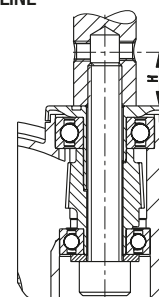
- the load capacity reduces at ambient temperatures above +30 °C

Additional details:

- bracket series: page 90
- brakes: page 112–113
- wheel series: page 61
- bearing types: page 84–85



2



Swivel castors	Swivel castors with "stop-fix" brake	Wheel Ø [mm]	Wheel width [mm]	Total castor width [mm]	Load capacity [kg]	Bearing type	Total height [mm]	Stem Ø [mm]	Stem length [mm]	Ø cross hole [mm]	Position cross hole (H) [mm]	Offset swivel castor [mm]
LKDGX-PATH 100XK-ZAX51	LKDGX-PATH 100XK-FI-ZAX51	100	2 x 18	80	100	ball bearing	103	18	62	M6	30	31
LKDGX-PATH 100XK-ZAX55	LKDGX-PATH 100XK-FI-ZAX55	100	2 x 18	80	100	ball bearing	103	22	45	M8	20	31
LKDGX-PATH 125XK-ZAX51	LKDGX-PATH 125XK-FI-ZAX51	125	2 x 20	80	125	ball bearing	130	18	62	M6	30	40
LKDGX-PATH 125XK-ZAX55	LKDGX-PATH 125XK-FI-ZAX55	125	2 x 20	80	125	ball bearing	130	22	45	M8	20	40

Swivel castor with "stop-fix" brake with easy release kick lever as standard



Versions / options



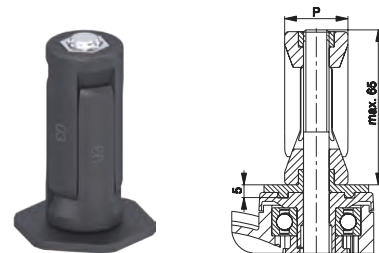
	electrically conductive version, non-marking	with combined wheel brake and directional lock (1 x 360°)	castor with special mounting height 121 / 135 mm	wheel Ø 150 mm	in special colour
Technical description page	50	115			
Product code suffix	-ELS	-RIFI	LKDGXH-...		
Available for	all	wheel Ø 125 mm	wheel Ø 100 / 125 mm	upon request	upon request

Versions / options for Blickle MOVE twin synthetic castors

2

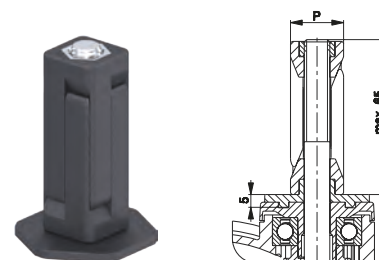
Synthetic expander fitting for round tubes

Product code suffix	Product code suffix Corrosion-resistant version	Internal tube dimension (P) [mm]	Available for all Blickle MOVE twin synthetic castors with the exception of the electrically conductive version. Castor and expander secured to prevent loosening with positive locking. Maximum fitting length is 65 mm. Increases total height of castors by 5 mm. Detailed description: page 105
-ER62	-EXR62	Ø 20–25	
-ER63	-EXR63	Ø 25–30	
-ER64	-EXR64	Ø 30–35	
-ER65	-EXR65	Ø 35–40	



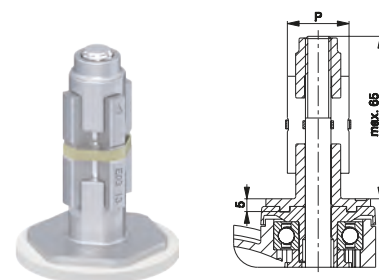
Synthetic expander fitting for square tubes

Product code suffix	Product code suffix Corrosion-resistant version	Internal tube dimension (P) [mm]	Available for all Blickle MOVE twin synthetic castors with the exception of the electrically conductive version. Castor and expander secured to prevent loosening with positive locking. Maximum fitting length is 65 mm. Increases total height of castors by 5 mm. Detailed description: page 105
-EV62	-EXV62	□ 18–21	
-EV63	-EXV63	□ 21–25	
-EV64	-EXV64	□ 25–29	
-EV65	-EXV65	□ 29–32	
-EV67	-EXV67	□ 32–38.5	



Metal expander fitting for round and square tubes

Product code suffix	Internal tube dimension round tube	Internal tube dimension square tube	Available for all Blickle MOVE twin synthetic castors with the exception of the corrosion-resistant version. Castor and expander secured to prevent loosening with positive locking. Maximum fitting length is 65 mm. Increases total height of castors by 5 mm. Detailed description: page 105
	(P) [mm]	(P) [mm]	
-E61	Ø 17–19	□ 17–19	
-E62	Ø 20–25	□ 18–21	
-E63	Ø 25–30	□ 21–25	
-E64	Ø 30–35	□ 25–29	
-E65	Ø 35–40	□ 29–32	
-E67	Ø 39–45	□ 32–38.5	



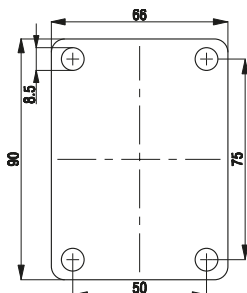
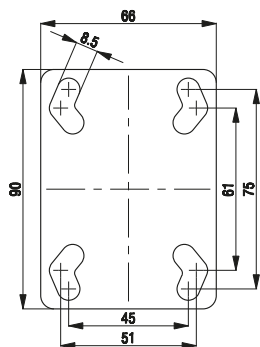
Versions / options for Blickle MOVE twin synthetic castors

Top plate fittings for Blickle MOVE twin synthetic castors

Product code suffix	Product code suffix Stainless steel version	Plate size [mm]	Bolt hole spacing [mm]	Bolt hole \emptyset [mm]	Top plate fitting in zinc-plated, blue-passivated design (Cr6-free) or corrosion-resistant design. Available upon request.
-P25	-PX25	90 x 66	75 x 45 / 61 x 51	8.5	
-P26	-PX26	90 x 66	75 x 50	8.5	

Plate no. 25

Plate no. 26



Stem fitting for Blickle MOVE twin synthetic castors

Product code suffix	Product code suffix Stainless steel version	Stem \emptyset P [mm]	Stem length Q [mm]	\emptyset Cross hole d [mm]	Position cross hole H [mm]
-ZA51	-ZAX51	18	62	M6	30
-ZA55	-ZAX55	22	45	M8	20

The castor is fitted using a plug-in stem, which is inserted into a corresponding tube or hole and secured. The stem fitting is fixed to the castor and a fixing bolt (cross hole) or clamp must be used to prevent it rotating or falling out.

The load capacities specified here can only be reached if the top plate of the swivel castor is completely supported by the entire diameter.

A stainless steel plug-in stem fitting is available for corrosion-resistant swivel castors.
The aforementioned dimensions must be taken into consideration when selecting the fitting with a stem.

