

## Cast iron and steel wheels and castors



## Selection tool

### Cast iron and steel wheels and castors



Series	G	SVS
Tread / wheel centre	Grey cast iron	Heat-treatable steel
Tread and tyre hardness	180–220 HB	190–230 HB
Wheel Ø	80–250 mm	65–300 mm
Load capacity up to	1,400 kg	15,000 kg
Heat resistance	optional	upon request
Use on concrete floors	–	–
For a description of the wheel, refer to	page 376	page 382
For information about swivel and fixed castors, refer to	page 377–381	page 383–384

✓ yes – no

## G series

### Cast iron wheels



250–1,400 kg

#### Tread and tyre hardness

180–220 HB

#### Smooth operation / floor preservation

sufficient

#### Rolling resistance

excellent

#### Wear resistance

excellent

#### Wheel:

- rugged grey cast iron, hardness 180–220 HB
- with grease nipple
- extremely low rolling and swivel resistance
- outstanding wear resistance
- machined tread and edges
- lacquered, colour silver

#### Other features:

- chemical resistance to many aggressive substances
- operating temperature:
  - plain bore version: -100 °C to +600 °C
  - ball bearing version: -20 °C to +120 °C
- consider the surface pressure on sensitive floors due to high point loads
- provide adequate lubrication on a regular basis for plain bore version
- to be lubricated according to the application temperature

#### Additional details:

- wheel series: page 70
- tread: page 59
- bearing types: page 84–85
- chemical resistance: page 51

Wheels	Wheel Ø (D) [mm]	Wheel width (T2) [mm]	Load capacity up to +70 °C [kg]	Bearing type	Axle bore Ø (d) [mm]	Hub length (T1) [mm]
G 80/12G	80	25	250	plain bore	12	35
G 80/15G	80	25	250	plain bore	15	35
G 100/15G	100	35	400	plain bore	15	45
G 100/15K	100	35	400	ball bearing	15	40
G 125/15G	125	35	450	plain bore	15	45
G 125/15K	125	35	450	ball bearing	15	45
G 127/20G	125	50	750	plain bore	20	60
G 127/20K	125	50	750	ball bearing	20	60
G 150/20G	150	50	900	plain bore	20	60
G 150/20K	150	50	900	ball bearing	20	60
G 200/20G	200	50	1,100	plain bore	20	60
G 200/20K	200	50	1,100	ball bearing	20	60
G 250/25G	250	60	1,400	plain bore	25	65
G 250/25K	250	60	1,400	ball bearing	25	70

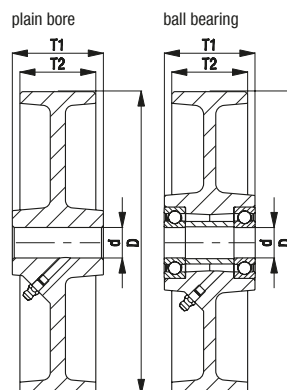
7

## Versions / options



heat-resistant versions

Technical description page	59, 97–99
Product code suffix	
Available for	see page 468



## L-G, B-G series

**Pressed steel castors, medium-duty version, with top plate, with cast iron wheel**

200–400 kg

**Bracket:** L/B series

- pressed steel, zinc-plated, blue-passivated, Cr6-free

**Swivel bracket:**

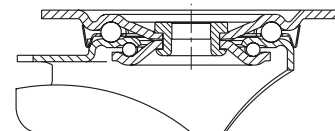
- double ball bearing in the swivel head
- strong central kingpin (from wheel Ø 150 mm)
- swivel head seal
- minimum swivel head play and smooth rolling characteristic and increased service life due to the special dynamic Blickle riveting process

**Wheel:** G series

- rugged grey cast iron, hardness 180–220 HB, grease nipple, lacquered, colour silver

**Additional details:**

- bracket series: page 91
- brakes: page 112–113
- wheel series: page 376
- bearing types: page 84–85



Swivel castors	Fixed castors	Swivel castors with "stop-fix" brake	Wheel Ø [mm]	Wheel width [mm]	Load capacity [kg]	Bearing type	Total height [mm]	Plate size [mm]	Bolt hole spacing [mm]	Bolt hole Ø [mm]	Offset swivel castor [mm]
L-G 80G	B-G 80G	L-G 80G-FI	80	25	200	plain bore	102	100 x 85	80 x 60	9	38
L-G 100G	B-G 100G	L-G 100G-FI	100	35	200	plain bore	125	100 x 85	80 x 60	9	36
L-G 125G	B-G 125G	L-G 125G-FI	125	35	200	plain bore	150	100 x 85	80 x 60	9	38
L-G 150G	B-G 150G	L-G 150G-FI	150	50	400	plain bore	190	140 x 110	105 x 75–80	11	60
L-G 200G	B-G 200G	L-G 200G-FI	200	50	400	plain bore	235	140 x 110	105 x 75–80	11	65

7

### Versions / options



	with "stop-top" brake	directional lock (separate) 1 x 360°	directional lock (separate) 1 x 360°	with steel foot guard	heat-resistant versions
Technical description page	112	115	115	116	59, 97–99
Product code suffix	-ST	RI-03.01	RI-05.03	-FS	
Available for	all	wheel Ø 100–125 mm*	wheel Ø 150–200 mm*	wheel Ø 100–200 mm upon request	see series LI-G (page 469)

\* Only for swivel castors without brake or swivel castor with "stop-top" brake upon request

## LK-G, BK-G, BH-G series

**Pressed steel castors, heavy-duty design,  
with top plate,  
with cast iron wheel**

250–600 kg

**Bracket:** LK/BK/BH series

- strong pressed steel, zinc-plated, blue-passivated, Cr6-free

**Swivel bracket:**

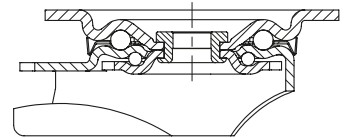
- double ball bearing in the swivel head
- strong central kingpin (from wheel Ø 125x50 mm)
- swivel head seal
- minimum swivel head play and smooth rolling characteristic and increased service life due to the special dynamic Blickle riveting process

**Wheel:** G series

- rugged grey cast iron, hardness 180–220 HB, grease nipple, lacquered, colour silver

**Additional details:**

- bracket series: page 92
- brakes: page 112–113
- wheel series: page 376
- bearing types: page 84–85



7

Swivel castors	Fixed castors	Swivel castors with "stop-fix" brake	Wheel Ø [mm]	Wheel width [mm]	Load capacity [kg]	Bearing type	Total height [mm]	Plate size [mm]	Bolt hole spacing [mm]	Bolt hole Ø [mm]	Offset swivel castor [mm]
LK-G 80G	BK-G 80G	LK-G 80G-FI	80	25	250	plain bore	110	100 x 85	80 x 60	9	40
LK-G 100G-1	BK-G 100G-1	LK-G 100G-1-FI	100	35	350	plain bore	130	100 x 85	80 x 60	9	45
LK-G 100K-1	BK-G 100K-1	LK-G 100K-1-FI	100	35	350	ball bearing	130	100 x 85	80 x 60	9	45
LK-G 100G-3	BK-G 100G-3	LK-G 100G-3-FI	100	35	350	plain bore	130	140 x 110	105 x 75–80	11	45
LK-G 100K-3	BK-G 100K-3	LK-G 100K-3-FI	100	35	350	ball bearing	130	140 x 110	105 x 75–80	11	45
LK-G 125G-1	BK-G 125G-1	LK-G 125G-1-FI	125	35	350	plain bore	155	100 x 85	80 x 60	9	48
LK-G 125K-1	BK-G 125K-1	LK-G 125K-1-FI	125	35	350	ball bearing	155	100 x 85	80 x 60	9	48
LK-G 125G-3	BK-G 125G-3	LK-G 125G-3-FI	125	35	350	plain bore	155	140 x 110	105 x 75–80	11	48
LK-G 125K-3	BK-G 125K-3	LK-G 125K-3-FI	125	35	350	ball bearing	155	140 x 110	105 x 75–80	11	48
LK-G 127G	BH-G 127G	LK-G 127G-FI	125	50	600	plain bore	170	140 x 110	105 x 75–80	11	55
LK-G 127K	BH-G 127K	LK-G 127K-FI	125	50	600	ball bearing	170	140 x 110	105 x 75–80	11	55
LK-G 150G	BH-G 150G	LK-G 150G-FI	150	50	600	plain bore	197	140 x 110	105 x 75–80	11	60
LK-G 150K	BH-G 150K	LK-G 150K-FI	150	50	600	ball bearing	197	140 x 110	105 x 75–80	11	60
LK-G 200G	BH-G 200G	LK-G 200G-FI	200	50	600	plain bore	245	140 x 110	105 x 75–80	11	62
LK-G 200K	BH-G 200K	LK-G 200K-FI	200	50	600	ball bearing	245	140 x 110	105 x 75–80	11	62

### Versions / options



	with "stop-top" brake	directional lock (separate) 1 x 360°	directional lock (separate) 1 x 360°	directional lock (separate) 1 x 360°	with steel foot guard
Technical description page	112	115	115	115	116
<b>Product code suffix</b>	<b>-ST</b>	<b>RI-05.01</b>	<b>RI-03.03</b>	<b>RI-05.03</b>	<b>-FS</b>
Available for	all	Ø 80–125x35 with plate 100x85 mm*	Ø 100–125x35 with plate 140x110 mm*	wheel Ø 125x50–200 mm*	wheel Ø 100–200 mm upon request

\* Only for swivel castors without brake or swivel castor with "stop-top" brake upon request

## LH-G, BH-G series

**Pressed steel castors, heavy-duty design, with top plate, with cast iron wheel**



250–900 kg

**Bracket:** LH/BH series

- strong pressed steel, zinc-plated, blue-passivated, Cr6-free
- heavy fork and top plate

**Swivel bracket:**

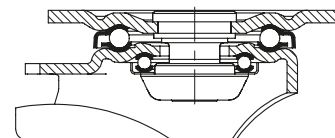
- double ball bearing in the swivel head
- bolted and secured central kingpin, extremely strong
- particularly resistant to shocks and impact due to **four specially-shaped, hardened bearing seats**

**Wheel:** G series

- rugged grey cast iron, hardness 180–220 HB, grease nipple, lacquered, colour silver

**Additional details:**

- bracket series: page 92
- brakes: page 112–113
- wheel series: page 376
- bearing types: page 84–85



Swivel castors	Fixed castors	Swivel castors with "stop-fix" brake	Wheel Ø [mm]	Wheel width [mm]	Load capacity [kg]	Bearing type	Total height [mm]	Plate size [mm]	Bolt hole spacing [mm]	Bolt hole Ø [mm]	Offset swivel castor [mm]
LH-G 80G	BH-G 80G	LH-G 80G-FI	80	25	250	plain bore	120	100 x 85	80 x 60	9	45
LH-G 100G-1	BH-G 100G-1	LH-G 100G-1-FI	100	35	400	plain bore	140	100 x 85	80 x 60	9	45
LH-G 100K-1	BH-G 100K-1	LH-G 100K-1-FI	100	35	400	ball bearing	140	100 x 85	80 x 60	9	45
LH-G 100G-3	BH-G 100G-3	LH-G 100G-3-FI	100	35	400	plain bore	140	140 x 110	105 x 75–80	11	45
LH-G 100K-3	BH-G 100K-3	LH-G 100K-3-FI	100	35	400	ball bearing	140	140 x 110	105 x 75–80	11	45
LH-G 125G-1	BH-G 125G-1	LH-G 125G-1-FI	125	35	450	plain bore	165	100 x 85	80 x 60	9	45
LH-G 125K-1	BH-G 125K-1	LH-G 125K-1-FI	125	35	450	ball bearing	165	100 x 85	80 x 60	9	45
LH-G 125G-3	BH-G 125G-3	LH-G 125G-3-FI	125	35	450	plain bore	165	140 x 110	105 x 75–80	11	45
LH-G 125K-3	BH-G 125K-3	LH-G 125K-3-FI	125	35	450	ball bearing	165	140 x 110	105 x 75–80	11	45
LH-G 127G	BH-G 127G	LH-G 127G-FI	125	50	750	plain bore	170	140 x 110	105 x 75–80	11	55
LH-G 127K	BH-G 127K	LH-G 127K-FI	125	50	750	ball bearing	170	140 x 110	105 x 75–80	11	55
LH-G 150G	BH-G 150G	LH-G 150G-FI	150	50	900	plain bore	197	140 x 110	105 x 75–80	11	65
LH-G 150K	BH-G 150K	LH-G 150K-FI	150	50	900	ball bearing	197	140 x 110	105 x 75–80	11	65
LH-G 200G	BH-G 200G	LH-G 200G-FI	200	50	900	plain bore	245	140 x 110	105 x 75–80	11	70
LH-G 200K	BH-G 200K	LH-G 200K-FI	200	50	900	ball bearing	245	140 x 110	105 x 75–80	11	70
LH-G 250G	BH-G 250G	*	250	60	900	plain bore	295	140 x 110	105 x 75–80	11	82
LH-G 250K	BH-G 250K	*	250	60	900	ball bearing	295	140 x 110	105 x 75–80	11	82

\* "stop-top" brake version, see versions / options

### Versions / options



	with "stop-top" brake	directional lock (separate) 1 x 360°	directional lock (separate) 1 x 360°	directional lock (separate) 1 x 360°	with steel foot guard	with spring-loaded foot guard	truck lock guard
Technical description page	112	115	115	115	116	116	114
Product code suffix	-ST	RI-04.01	RI-04.03	RI-05.03	-FS	-FG	FF 125 / 150 / 200
Available for	all	wheel Ø 80–125 mm with plate 100x85 mm**	Ø 100–125x35 with plate 140x110 mm**	wheel Ø 125x50–200 mm**	wheel Ø 100–250 mm	upon request	wheel Ø 125x50–200 mm

\*\* Only for swivel castors without brake or swivel castor with "stop-top" brake upon request

## LO-G, BO-G series

### Welded steel heavy-duty castors, with cast iron wheel

750–1,200 kg

**Bracket:** LO/BO series

- solid welded steel construction, zinc-plated, blue-passivated, Cr6-free

**Swivel bracket:**

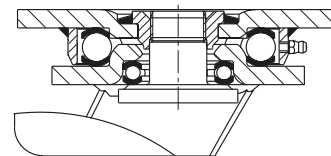
- double ball bearing in the swivel head
- **four specially-shaped, hardened bearing seats** for additional strength
- bolted and secured welded central kingpin, extremely strong
- swivel head seal with labyrinth design
- grease nipple

**Wheel:** G series

- rugged grey cast iron, hardness 180–220 HB, grease nipple, lacquered, colour silver

**Additional details:**

- bracket series: page 93
- brakes: page 112–113
- wheel series: page 376
- bearing types: page 84–85



Swivel castors	Fixed castors	Swivel castor with "stop-top" brake	Wheel Ø [mm]	Wheel width [mm]	Load capacity [kg]	Bearing type	Total height [mm]	Plate size [mm]	Bolt hole spacing [mm]	Bolt hole Ø [mm]	Offset swivel castor [mm]
LO-G 127G	BO-G 127G	LO-G 127G-ST	125	50	750	plain bore	170	140 x 110	105 x 75–80	11	50
LO-G 127K	BO-G 127K	LO-G 127K-ST	125	50	750	ball bearing	170	140 x 110	105 x 75–80	11	50
LO-G 150G	BO-G 150G	LO-G 150G-ST	150	50	900	plain bore	200	140 x 110	105 x 75–80	11	55
LO-G 150K	BO-G 150K	LO-G 150K-ST	150	50	900	ball bearing	200	140 x 110	105 x 75–80	11	55
LO-G 200G	BO-G 200G	LO-G 200G-ST	200	50	1,100	plain bore	245	140 x 110	105 x 75–80	11	60
LO-G 200K	BO-G 200K	LO-G 200K-ST	200	50	1,100	ball bearing	245	140 x 110	105 x 75–80	11	60
LO-G 250G	BO-G 250G	LO-G 250G-ST	250	60	1,200	plain bore	295	140 x 110	105 x 75–80	11	70
LO-G 250K	BO-G 250K	LO-G 250K-ST	250	60	1,200	ball bearing	295	140 x 110	105 x 75–80	11	70

7

#### Versions / options



	with directional lock 4 x 90°	with steel foot guard	truck lock	heat-resistant versions
Technical description page	115	116	114	59, 97–99
Product code suffix	<b>-RI4</b>	<b>-FS</b>	<b>FF 125 / 150 / 200</b>	
Available for	wheel Ø 125–200 mm	upon request	wheel Ø 125–200 mm	see series LI0-G (page 470)

## LS-G, BS-G series

### Welded steel heavy-duty castors, heavy-duty swivel head, with cast iron wheel

750–1,400 kg

**Bracket:** LS/BS series

- particularly robust welded steel construction, zinc-plated, yellow-passivated, Cr6-free

**Swivel bracket:**

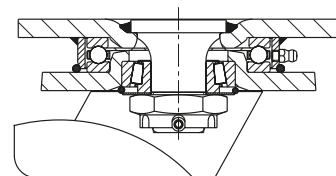
- axial grooved ball bearing ISO 104 and tapered roller bearing ISO 355 in the swivel head
- bolted and secured welded central kingpin, extremely strong
- dust and splash-proof
- grease nipple

**Wheel:** G series

- rugged grey cast iron, hardness 180–220 HB, grease nipple, lacquered, colour silver

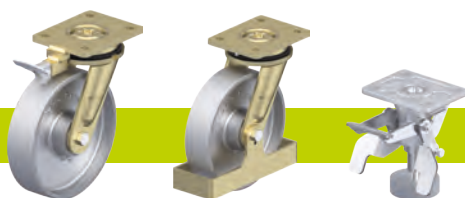
**Additional details:**

- bracket series: page 94
- brakes: page 112–113
- wheel series: page 376
- bearing types: page 84–85



Swivel castors	Fixed castors	Swivel castor with "stop-top" brake	Wheel Ø [mm]	Wheel width [mm]	Load capacity [kg]	Bearing type	Total height [mm]	Plate size [mm]	Bolt hole spacing [mm]	Bolt hole Ø [mm]	Offset swivel castor [mm]
LS-G 127G	BS-G 127G	LS-G 127G-ST	125	50	750	plain bore	170	140 x 110	105 x 75–80	11	50
LS-G 127K	BS-G 127K	LS-G 127K-ST	125	50	750	ball bearing	170	140 x 110	105 x 75–80	11	50
LS-G 150G	BS-G 150G	LS-G 150G-ST	150	50	900	plain bore	200	140 x 110	105 x 75–80	11	55
LS-G 150K	BS-G 150K	LS-G 150K-ST	150	50	900	ball bearing	200	140 x 110	105 x 75–80	11	55
LS-G 200G	BS-G 200G	LS-G 200G-ST	200	50	1,100	plain bore	245	140 x 110	105 x 75–80	11	60
LS-G 200K	BS-G 200K	LS-G 200K-ST	200	50	1,100	ball bearing	245	140 x 110	105 x 75–80	11	60
LS-G 250G	BS-G 250G	LS-G 250G-ST	250	60	1,400	plain bore	305	175 x 140	140 x 105	14	75
LS-G 250K	BS-G 250K	LS-G 250K-ST	250	60	1,400	ball bearing	305	175 x 140	140 x 105	14	75

### Versions / options

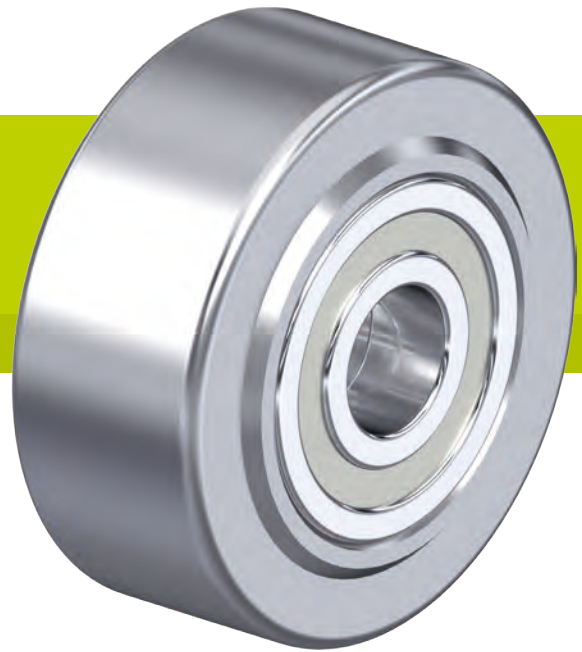


	with directional lock 4 x 90°	with steel foot guard	truck lock
Technical description page	115	116	114
Product code suffix	-RI4	-FS	FF 125 / 150 / 200
Available for	all	all	wheel Ø 125–200 mm



## SVS series

### Super heavy-duty solid steel wheels



750–15,000 kg

**Tread and tyre hardness**

190–230 HB

**Smooth operation / floor preservation**

sufficient

**Rolling resistance**

excellent

**Wear resistance**

excellent

**Wheel:**

- heat-treatable steel, machined, hardness 190–230 HB
- slightly crowned tread
- lightly-oiled surface
- extremely low rolling resistance
- easy operation on smooth surfaces
- outstanding wear resistance
- extremely high static and dynamic load capacity

**Other features:**

- chemical resistance to many aggressive substances
- operating temperature: -20 °C to +120 °C
- consider the surface pressure on sensitive floors due to high point loads

**Additional details:**

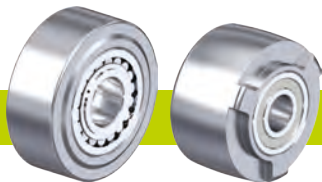
- wheel series: page 70
- tread: page 59
- bearing types: page 84–85
- chemical resistance: page 51

Wheels	Wheel Ø (D) [mm]	Wheel width (T2) [mm]	Load capacity [kg]	Bearing type	Axle bore Ø (d) [mm]	Hub length (T1) [mm]
<b>SVS 65/20K</b>	65	40	750	ball bearing	20	45
<b>SVS 80/20K</b>	80	40	1,100	ball bearing	20	45
<b>SVS 100/25K</b>	100	40	1,700	ball bearing	25	45
<b>SVS 127/30K</b>	125	55	2,750	ball bearing	30	60
<b>SVS 150/45K</b>	150	55	4,000	ball bearing	45	60
<b>SVS 201/50K</b>	200	55	6,000	ball bearing	50	60
<b>SVS 200/60K</b>	200	80	7,000	ball bearing	60	90
<b>SVS 250/70K</b>	250	65	10,000	ball bearing	70	75
<b>SVS 300/100K</b>	300	90	15,000	ball bearing	100	100

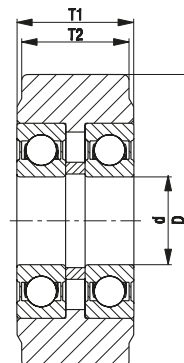
Other dimensions available upon request

7

### Versions / options



	with spherical roller bearing	other versions
Technical description page	85	
Product code suffix	-PR	
Available for	upon request	upon request



## LH-SVS, BH-SVS series

**Pressed steel castors, heavy-duty design, with top plate, with extra heavy-duty solid steel wheel**



700–900 kg

**Bracket:** LH/BH series

- strong pressed steel, zinc-plated, blue-passivated, Cr6-free
- heavy fork and top plate

**Swivel bracket:**

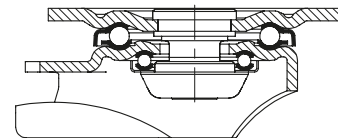
- double ball bearing in the swivel head
- bolted and secured central kingpin, extremely strong
- particularly resistant to shocks and impact due to **four specially-shaped, hardened bearing seats**

**Wheel:** SVS series

- heat-treatable steel, hardness 190–230 HB, slightly crowned tread

**Additional details:**

- bracket series: page 92
- wheel series: page 382
- bearing types: page 84–85



Swivel castors	Fixed castors	Wheel Ø [mm]	Wheel width [mm]	Load capacity [kg]	Bearing type	Total height [mm]	Plate size [mm]	Bolt hole spacing [mm]	Bolt hole Ø [mm]	Offset swivel castor [mm]
LH-SVS 65K	BH-SVS 65K	65	40	700	ball bearing	97	100 x 85	80 x 60	9	45
LH-SVS 80K	BH-SVS 80K	80	40	700	ball bearing	120	100 x 85	80 x 60	9	45
LH-SVS 100K-1	BH-SVS 100K-1	100	40	700	ball bearing	140	100 x 85	80 x 60	9	45
LH-SVS 100K-3	BH-SVS 100K-3	100	40	700	ball bearing	140	140 x 110	105 x 75–80	11	45
LH-SVS 127K	BH-SVS 127K	125	55	900	ball bearing	170	140 x 110	105 x 75–80	11	55

7

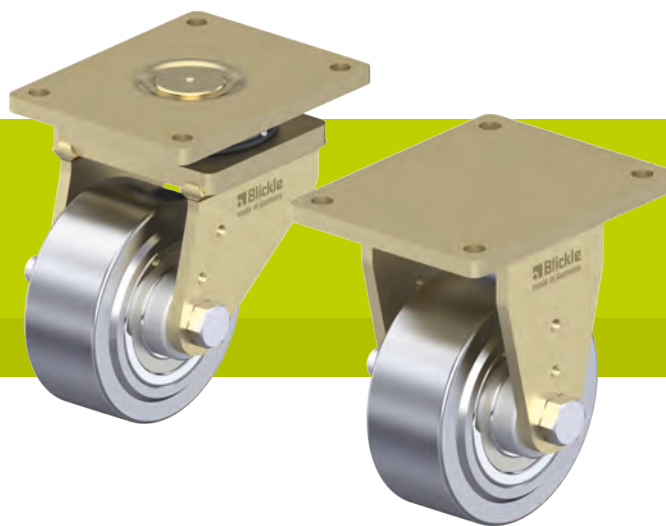
### Versions / options



	directional lock (separate) 1 x 360°	directional lock (separate) 1 x 360°	directional lock (separate) 1 x 360°	with steel foot guard	truck lock
Technical description page	115	115	115	116	112
<b>Product code suffix</b>	<b>RI-04.01</b>	<b>RI-04.03</b>	<b>RI-05.03</b>	<b>-FS</b>	<b>FF 125</b>
Available for	wheel Ø 80–100 mm with plate 100x85 mm	wheel Ø 100 mm with plate 140x110 mm	wheel Ø 125 mm	wheel Ø 125 mm upon request	wheel Ø 125 mm

## LS-SVS, BS-SVS series

**Welded steel heavy-duty castors,  
extra heavy-duty swivel head,  
with extra heavy-duty wheel made of solid steel**



1,700–12,000 kg

**Bracket:** LS/BS series

- particularly robust welded steel construction, zinc-plated, yellow-passivated, Cr6-free

**Swivel bracket:**

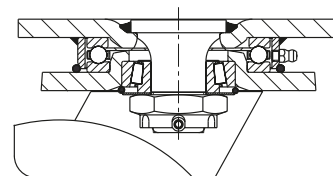
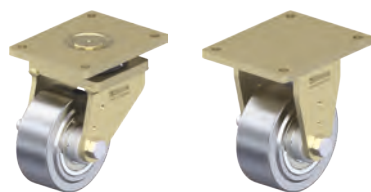
- axial grooved ball bearing ISO 104 and tapered roller bearing ISO 355 in the swivel head
- bolted and secured welded central kingpin, extremely strong
- dust and splash-proof
- grease nipple

**Wheel:** SVS series

- heat-treatable steel, hardness 190–230 HB, slightly crowned tread

**Additional details:**

- bracket series: page 94
- wheel series: page 382
- bearing types: page 84–85



Swivel castors	Fixed castors	Wheel Ø [mm]	Wheel width [mm]	Load capacity [kg]	Bearing type	Total height [mm]	Plate size [mm]	Bolt hole spacing [mm]	Bolt hole Ø [mm]	Offset swivel castor [mm]
LS-SVS 100K	BS-SVS 100K	100	40	1,700	ball bearing	145	140 x 110	105 x 75–80	11	50
LS-SVS 127K	BS-SVS 127K	125	55	1,750	ball bearing	170	140 x 110	105 x 75–80	11	50
LS-SVS 150K-35	BS-SVS 150K-35	150	55	3,000	ball bearing	205	175 x 140	140 x 105	14	65
LS-SVS 201K	BS-SVS 201K	200	55	3,000	ball bearing	255	175 x 140	140 x 105	14	65
LS-SVS 200K	BS-SVS 200K	200	80	6,000	ball bearing	280	255 x 200	210 x 160	18	75
LS-SVS 250K	BS-SVS 250K	250	65	10,000	ball bearing	380	400 x 300	340 x 240	26	110
LS-SVS 300K	BS-SVS 300K	300	90	12,000	ball bearing	430	400 x 300	340 x 240	26	110

7

### Versions / options



	with directional lock 4 x 90°	with directional lock 4 x 90° (inserted by hand)	with steel foot guard
Technical description page	115	115	116
<b>Product code suffix</b>	<b>-RI4</b>	<b>-RI4H</b>	<b>-FS</b>
Available for	wheel Ø 100–200x55 mm	wheel Ø 200x80–300 mm upon request	wheel Ø 100–200 mm