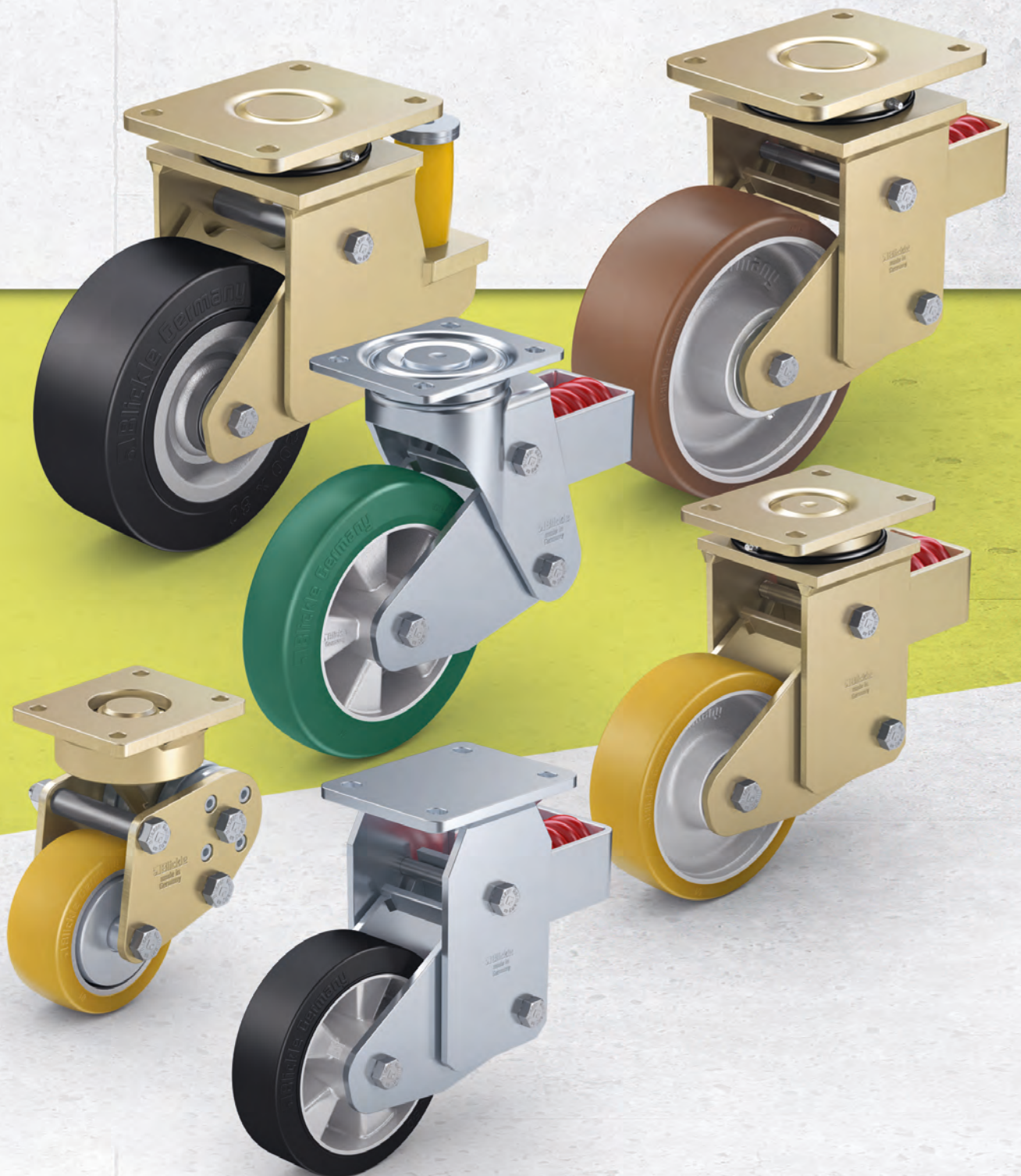
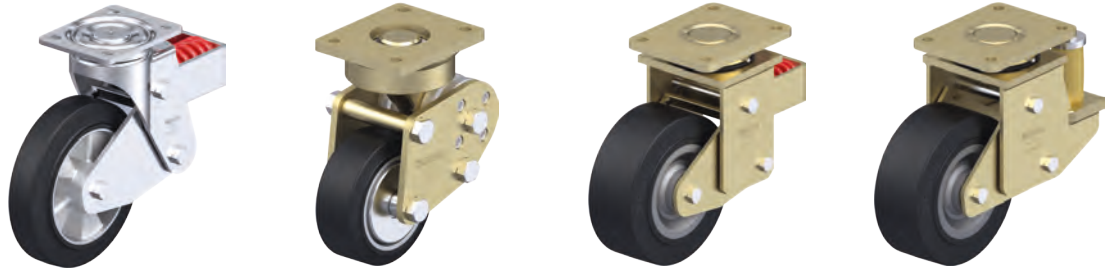


Spring-loaded castors



Selection tool

Spring-loaded castors



Series	LHF	LPFE	LSFN	LSFE
Bracket description	strong pressed steel	solid welded steel construction	robust welded steel construction	robust welded steel construction
Suspension	steel spring	polyurethane torsion spring	steel spring	polyurethane spring element
Wheel Ø	100–200 mm	100–150 mm	160–300 mm	160–250 mm
Castor load capacity up to	800 kg	500 kg	2,400 kg	1,800 kg
Initial tension	30–50 kg	40 kg	50–150 kg	50–200 kg
Spring tension	200–570 kg	330–500 kg	400–1,500 kg	300–1,200 kg
Max. spring travel	19–25 mm	16–25 mm	25–45 mm	25 mm
Speeds up to 16 km/h	■ ■ ■ ■ ■ □	■ ■ ■ ■ ■ ■	■ ■ ■ ■ ■ ■	■ ■ ■ ■ ■ ■
Damping characteristics	■ ■ ■ ■ □ □	■ ■ ■ ■ ■ ■	■ ■ ■ ■ □ □	■ ■ ■ ■ ■ ■
Used on challenging surfaces	■ ■ ■ ■ ■ □	■ ■ ■ ■ □ □	■ ■ ■ ■ ■ ■	■ ■ ■ ■ ■ ■
Available wheel series	ALEV, ALST, ALTH	ALEV, ALTH	SE, GST, GTH, GB	SE, GST, GTH, GB
For a description of the wheel, refer to	page 221, 294, 274	page 221, 274	page 228, 301, 286–287, 312–313	page 228, 301, 286–287, 312–313
For information about swivel and fixed castors, refer to	page 476, 480, 483	page 477, 484	page 478, 481, 485, 487	page 479, 482, 486, 488

■ ■ ■ ■ ■ excellent
 ■ ■ ■ ■ ■ very good
 ■ ■ ■ ■ good
 ■ ■ satisfactory
 ■ adequate

LHF-ALEV, BHF-ALEV series

Pressed steel castors, heavy-duty design, with steel spring, wheel with "Blickle EasyRoll" elastic solid rubber tyre

200–500 kg

Bracket: LHF/BHF series

- strong pressed steel, zinc-plated, blue-passivated, Cr6-free
- heavy fork and top plate
- robust spring structure with steel spring
- maintenance-free spring mechanism

Swivel bracket:

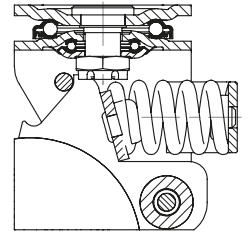
- double ball bearing in the swivel head
- bolted and secured central kingpin, extremely strong
- particularly resistant to shocks and impact due to **four specially-shaped, hardened bearing seats**

Wheel: ALEV series

- tyre: high-quality elastic solid rubber "Blickle EasyRoll" in smooth rolling quality, hardness 65 Shore A, colour black
- wheel centre: die-cast aluminium

Additional details:

- bracket series: page 94
- wheel series: page 63
- bearing types: page 84–85



Swivel castors	Fixed castors	Wheel Ø [mm]	Wheel width [mm]	Load capacity [kg]	Spring tension [kg]	Initial tension [kg]	Spring travel [mm]	Total height [mm]	Plate size [mm]	Bolt hole spacing [mm]	Bolt hole Ø [mm]	Offset swivel castor [mm]
LHF-ALEV 100K-1	BHF-ALEV 100K-1	100	40	200	200	30	19	175	100 x 85	80 x 60	9	32
LHF-ALEV 100K-3	BHF-ALEV 100K-3	100	40	200	200	30	19	175	140 x 110	105 x 75–80	11	32
LHF-ALEV 125K-1	BHF-ALEV 125K-1	125	40	250	240	30	21	200	100 x 85	80 x 60	9	45
LHF-ALEV 125K-3	BHF-ALEV 125K-3	125	40	250	240	30	21	200	140 x 110	105 x 75–80	11	45
LHF-ALEV 160K	BHF-ALEV 160K	160	50	400	400	50	25	245	140 x 110	105 x 75–80	11	65
LHF-ALEV 200K	BHF-ALEV 200K	200	50	500	400	50	25	265	140 x 110	105 x 75–80	11	65

11

Versions / options



	with non-marking grey tyre	electrically conductive version, black tyre	with "Radstop" wheel brake
Technical description page	52	50	113
Product code suffix	-SG	-EL	-RA
Available for	all	upon request	upon request

LPFE-ALEV, BPFE-ALEV series

Heavy-duty castors with polyurethane torsion springs, wheel with "Blickle EasyRoll" elastic solid rubber tyre

200–400 kg

Bracket: LPFE/BPFE series

- solid welded steel construction, solid forged part, zinc-plated, yellow-passivated, Cr6-free
- patented woodruff key design for outstanding spring-damping properties

Swivel bracket:

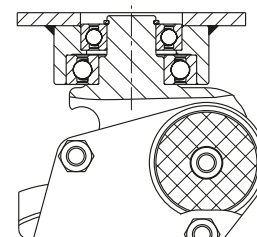
- one sealed lifetime lubricated grooved ball bearing in the swivel head (two for wheel Ø 125x50 mm or more)

Wheel: ALEV series

- tyre: high-quality elastic solid rubber "Blickle EasyRoll" in smooth rolling quality, hardness 65 Shore A, colour black
- wheel centre: die-cast aluminium

Additional details:

- bracket series: page 95
- wheel series: page 63
- bearing types: page 84–85



Swivel castors	Fixed castors	Wheel Ø [mm]	Wheel width [mm]	Load capacity [kg]	Spring tension [kg]	Initial tension [kg]	Spring travel [mm]	Total height [mm]	Plate size [mm]	Bolt hole spacing [mm]	Bolt hole Ø [mm]	Offset swivel castor [mm]
LPFE-ALEV 100K-FA	BPFE-ALEV 100K-FA	100	40	200	330	40	16	170	100 x 85	80 x 60	9	38
LPFE-ALEV 125K-FA	BPFE-ALEV 125K-FA	125	40	250	290	40	18	192	100 x 85	80 x 60	9	45
LPFE-ALEV 127K	BPFE-ALEV 127K	125	50	300	370	40	25	225	140 x 110	105 x 75–80	11	61
LPFE-ALEV 150K	BPFE-ALEV 150K	150	50	400	370	40	25	255	140 x 110	105 x 75–80	11	61

Versions / options



	with non-marking grey tyre	electrically conductive version, black tyre	with stem
Technical description page	52	50	104
Product code suffix	-SG	-EL	-ZA
Available for	all	upon request	upon request

LSFN-SE, BSFN-SE series

Welded steel heavy-duty castors with steel spring, wheel with "Blickle EasyRoll" elastic solid rubber tyres

450–1,000 kg

Bracket: LSFN/BSFN series

- particularly robust welded steel construction, zinc-plated, yellow-passivated, Cr6-free
- robust spring structure with steel spring
- maintenance-free spring mechanism

Swivel bracket:

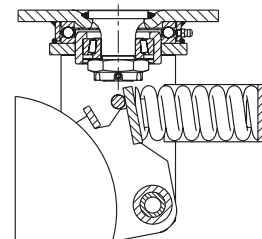
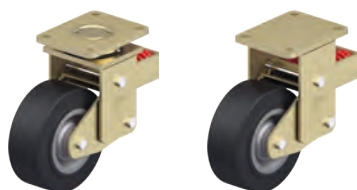
- axial grooved ball bearing ISO 104 and tapered roller bearing ISO 355 in the swivel head
- bolted and secured welded central kingpin, extremely strong
- dust and splash-proof
- grease nipple

Wheel: SE series

- tyre: high-quality elastic solid rubber "Blickle EasyRoll" in smooth rolling quality, hardness 65 Shore A, colour black
- wheel centre: thick-walled pressed steel, lacquered, colour anthracite

Additional details:

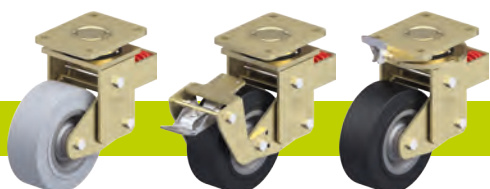
- bracket series: page 95
- wheel series: page 63
- bearing types: page 84–85



Swivel castors	Fixed castors	Wheel Ø [mm]	Wheel width [mm]	Load capacity [kg]	Spring tension [kg]	Initial tension [kg]	Spring travel [mm]	Total height [mm]	Plate size [mm]	Bolt hole spacing [mm]	Bolt hole Ø [mm]	Offset swivel castor [mm]
LSFN-SE 160K	BSFN-SE 160K	160	50	450	400	50	25	245	140 x 110	105 x 75–80	11	100
LSFN-SE 200K	BSFN-SE 200K	200	50	600	400	50	25	265	140 x 110	105 x 75–80	11	100
LSFN-SE 202K	BSFN-SE 202K	200	80	850	570	75	25	275	175 x 140	140 x 105	14	100
LSFN-SE 250K	BSFN-SE 250K	250	60	850	570	75	25	315	175 x 140	140 x 105	14	120
LSFN-SE 252K	BSFN-SE 252K	250	80	1,000	750	100	25	315	175 x 140	140 x 105	14	120
LSFN-SE 300K	BSFN-SE 300K	300	75	1,000	850	100	45	395	200 x 160	160 x 120	14	120

11

Versions / options



	with non-marking grey tyre	with "Radstop" wheel brake	with directional lock
Technical description page	52	113	115
Product code suffix	-SG	-RA	
Available for	wheel Ø 160–200 mm, others upon request	upon request	upon request

LSFE-SE, BSFE-SE series

Welded steel heavy-duty castors with polyurethane spring, wheel with "Blickle EasyRoll" elastic solid rubber tyres

450–1,000 kg

Bracket: LSFE/BSFE series

- particularly robust welded steel construction, zinc-plated, yellow-passivated, Cr6-free
- elastomer spring for excellent damping properties
- maintenance-free spring mechanism

Swivel bracket:

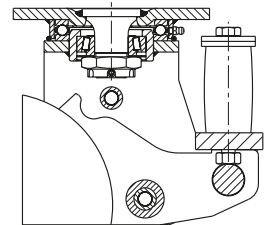
- axial grooved ball bearing ISO 104 and tapered roller bearing ISO 355 in the swivel head
- bolted and secured welded central kingpin, extremely strong
- dust and splash-proof
- grease nipple

Wheel: SE series

- tyre: high-quality elastic solid rubber "Blickle EasyRoll" in smooth rolling quality, hardness 65 Shore A, colour black
- wheel centre: thick-walled pressed steel, lacquered, colour anthracite

Additional details:

- bracket series: page 95
- wheel series: page 63
- bearing types: page 84–85



Swivel castors	Fixed castors	Wheel Ø [mm]	Wheel width [mm]	Load capacity [kg]	Spring tension [kg]	Initial tension [kg]	Spring travel [mm]	Total height [mm]	Plate size [mm]	Bolt hole spacing [mm]	Bolt hole Ø [mm]	Offset swivel castor [mm]
LSFE-SE 160K	BSFE-SE 160K	160	50	450	300	50	25	245	140 x 110	105 x 75–80	11	100
LSFE-SE 200K	BSFE-SE 200K	200	50	600	500	50	25	265	140 x 110	105 x 75–80	11	100
LSFE-SE 202K	BSFE-SE 202K	200	80	850	700	100	25	275	175 x 140	140 x 105	14	100
LSFE-SE 250K	BSFE-SE 250K	250	60	850	700	100	25	315	175 x 140	140 x 105	14	120
LSFE-SE 252K	BSFE-SE 252K	250	80	1,000	700	100	25	315	175 x 140	140 x 105	14	120

Versions / options



	with non-marking grey tyre	with "Radstop" wheel brake	with directional lock	different spring tension
Technical description page	52	113	115	
Product code suffix	-SG	-RA		
Available for	wheel Ø 160–200 mm, others upon request	upon request	upon request	upon request

LHF-ALST, BHF-ALST series

Pressed steel castors, heavy-duty design, with steel spring, wheel with Blickle Softhane® polyurethane tread

320–750 kg

Bracket: LHF/BHF series

- strong pressed steel, zinc-plated, blue-passivated, Cr6-free
- heavy fork and top plate
- robust spring structure with steel spring
- maintenance-free spring mechanism

Swivel bracket:

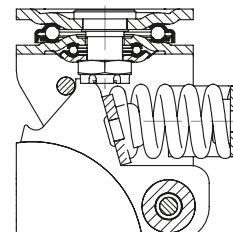
- double ball bearing in the swivel head
- bolted and secured central kingpin, extremely strong
- particularly resistant to shocks and impact due to **four specially-shaped, hardened bearing seats**

Wheel: ALST series

- tread: high-quality polyurethane elastomer Blickle Softhane®, hardness 75 Shore A, colour green, non-marking, non-staining
- wheel centre: die-cast aluminium, colour silver grey

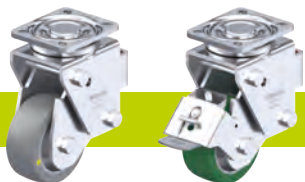
Additional details:

- bracket series: page 94
- wheel series: page 66
- bearing types: page 84–85



Swivel castors	Fixed castors	Wheel Ø [mm]	Wheel width [mm]	Load capacity [kg]	Spring tension [kg]	Initial tension [kg]	Spring travel [mm]	Total height [mm]	Plate size [mm]	Bolt hole spacing [mm]	Bolt hole Ø [mm]	Offset swivel castor [mm]
LHF-ALST 100K-1	BHF-ALST 100K-1	100	40	320	200	30	19	175	100 x 85	80 x 60	9	32
LHF-ALST 100K-3	BHF-ALST 100K-3	100	40	320	200	30	19	175	140 x 110	105 x 75–80	11	32
LHF-ALST 125K-1	BHF-ALST 125K-1	125	40	350	240	30	21	200	100 x 85	80 x 60	9	45
LHF-ALST 125K-3	BHF-ALST 125K-3	125	40	350	240	30	21	200	140 x 110	105 x 75–80	11	45
LHF-ALST 160K	BHF-ALST 160K	160	50	580	570	50	25	245	140 x 110	105 x 75–80	11	65
LHF-ALST 200K	BHF-ALST 200K	200	50	750	570	50	25	265	140 x 110	105 x 75–80	11	65

Versions / options



	antistatic version, non-marking grey	with "Radstop" wheel brake
Technical description page	50	113
Product code suffix	-AS	-RA
Available for	upon request	upon request

LSFN-GST, BSFN-GST series

Welded steel heavy-duty castors with steel spring, wheel with Blickle Softhane® polyurethane tread

600–1,800 kg

Bracket: LSFN/BSFN series

- particularly robust welded steel construction, zinc-plated, yellow-passivated, Cr6-free
- robust spring structure with steel spring
- maintenance-free spring mechanism

Swivel bracket:

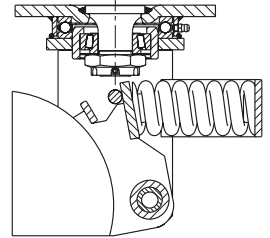
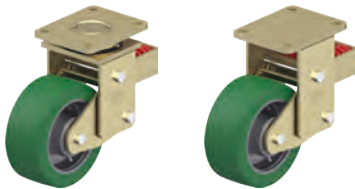
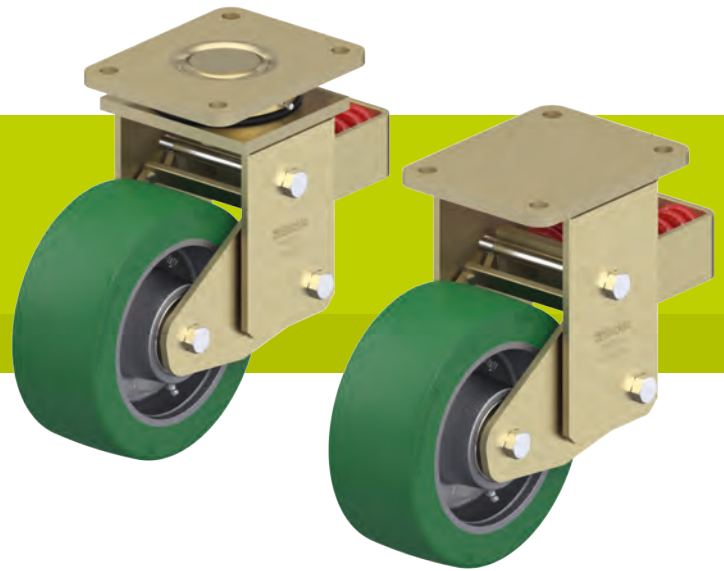
- axial grooved ball bearing ISO 104 and tapered roller bearing ISO 355 in the swivel head
- bolted and secured welded central kingpin, extremely strong
- dust and splash-proof
- grease nipple

Wheel: GST series

- tread: high-quality polyurethane elastomer Blickle Softhane®, hardness 75 Shore A, colour green, non-marking, non-staining
- wheel centre: rugged grey cast iron, with grease nipple, lacquered, colour silver

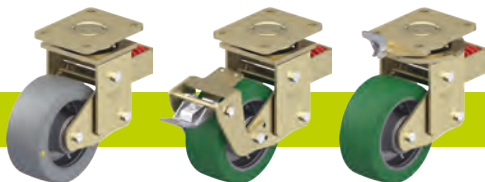
Additional details:

- bracket series: page 95
- wheel series: page 67
- bearing types: page 84–85



Swivel castors	Fixed castors	Wheel Ø [mm]	Wheel width [mm]	Load capacity [kg]	Spring tension [kg]	Initial tension [kg]	Spring travel [mm]	Total height [mm]	Plate size [mm]	Bolt hole spacing [mm]	Bolt hole Ø [mm]	Offset swivel castor [mm]
LSFN-GST 160K	BSFN-GST 160K	160	50	600	570	75	25	245	140 x 110	105 x 75–80	11	100
LSFN-GST 200K	BSFN-GST 200K	200	50	800	570	75	25	265	140 x 110	105 x 75–80	11	100
LSFN-GST 202K	BSFN-GST 202K	200	80	1,200	750	100	25	275	175 x 140	140 x 105	14	100
LSFN-GST 250K	BSFN-GST 250K	250	60	1,200	750	100	25	315	175 x 140	140 x 105	14	120
LSFN-GST 252K	BSFN-GST 252K	250	80	1,400	1,000	150	45	370	200 x 160	160 x 120	14	120
LSFN-GST 302K	BSFN-GST 302K	300	80	1,800	1,000	150	45	395	200 x 160	160 x 120	14	120

Versions / options



	antistatic version, non-marking grey	with "Radstop" wheel brake	with directional lock
Technical description page	50	113	115
Product code suffix	-AS	-RA	
Available for	upon request	upon request	upon request

LSFE-GST, BSFE-GST series

Welded steel heavy-duty castors with polyurethane spring, wheel with Blickle Softhane® polyurethane tread

600–1,400 kg

Bracket: LSFE/BSFE series

- particularly robust welded steel construction, zinc-plated, yellow-passivated, Cr6-free
- elastomer spring for excellent damping properties
- maintenance-free spring mechanism

Swivel bracket:

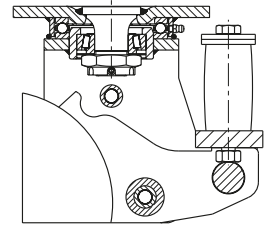
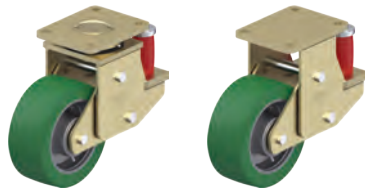
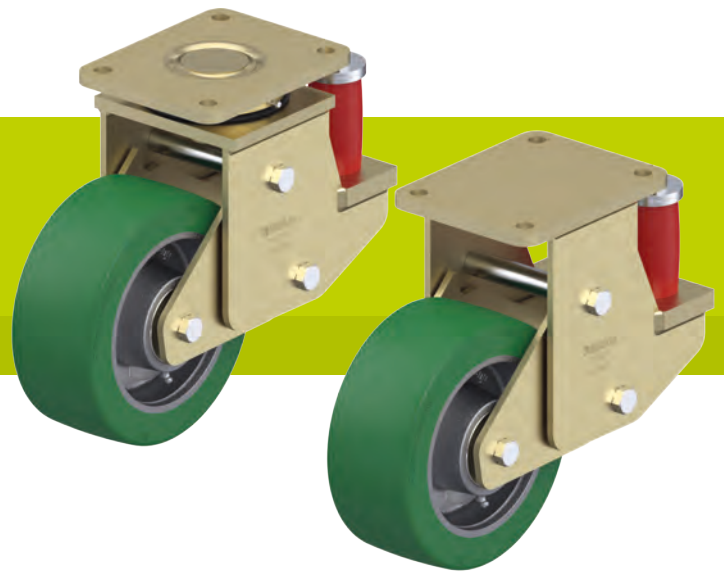
- axial grooved ball bearing ISO 104 and tapered roller bearing ISO 355 in the swivel head
- bolted and secured welded central kingpin, extremely strong
- dust and splash-proof
- grease nipple

Wheel: GST series

- tread: high-quality polyurethane elastomer Blickle Softhane®, hardness 75 Shore A, colour green, non-marking, non-staining
- wheel centre: rugged grey cast iron, with grease nipple, lacquered, colour silver

Additional details:

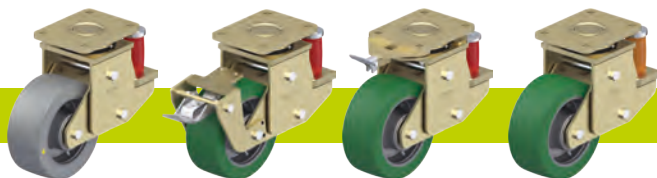
- bracket series: page 95
- wheel series: page 67
- bearing types: page 84–85



Swivel castors	Fixed castors	Wheel Ø [mm]	Wheel width [mm]	Load capacity [kg]	Spring tension [kg]	Initial tension [kg]	Spring travel [mm]	Total height [mm]	Plate size [mm]	Bolt hole spacing [mm]	Bolt hole Ø [mm]	Offset swivel castor [mm]
LSFE-GST 160K	BSFE-GST 160K	160	50	600	500	50	25	245	140 x 110	105 x 75–80	11	100
LSFE-GST 200K	BSFE-GST 200K	200	50	800	500	50	25	265	140 x 110	105 x 75–80	11	100
LSFE-GST 202K	BSFE-GST 202K	200	80	1,200	850	150	25	275	175 x 140	140 x 105	14	100
LSFE-GST 250K	BSFE-GST 250K	250	60	1,200	850	150	25	315	175 x 140	140 x 105	14	120
LSFE-GST 252K	BSFE-GST 252K	250	80	1,400	1,200	200	25	315	200 x 160	160 x 120	14	120

11

Versions / options



	antistatic version, non-marking grey	with "Radstop" wheel brake	with directional lock	different spring tension
Technical description page	50	113	115	
Product code suffix	-AS	-RA		
Available for	upon request	upon request	upon request	upon request

LHF-ALTH, BHF-ALTH series

Pressed steel castors, heavy-duty design, with steel spring, wheel with Blickle Extrathane® polyurethane tread

350–800 kg

Bracket: LHF/BHF series

- strong pressed steel, zinc-plated, blue-passivated, Cr6-free
- heavy fork and top plate
- robust spring structure with steel spring
- maintenance-free spring mechanism

Swivel bracket:

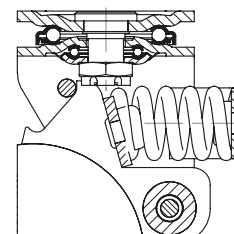
- double ball bearing in the swivel head
- bolted and secured central kingpin, extremely strong
- particularly resistant to shocks and impact due to **four specially-shaped, hardened bearing seats**

Wheel: ALTH series

- tread: high-quality polyurethane elastomer Blickle Extrathane®, hardness 92 Shore A, colour light brown, non-marking, non-staining
- wheel centre: die-cast aluminium, colour silver grey

Additional details:

- bracket series: page 94
- wheel series: page 65
- bearing types: page 84–85



Swivel castors	Fixed castors	Wheel Ø [mm]	Wheel width [mm]	Load capacity [kg]	Spring tension [kg]	Initial tension [kg]	Spring travel [mm]	Total height [mm]	Plate size [mm]	Bolt hole spacing [mm]	Bolt hole Ø [mm]	Offset swivel castor [mm]
LHF-ALTH 101K-1-FA	BHF-ALTH 101K-1-FA	100	40	350	200	30	19	175	100 x 85	80 x 60	9	32
LHF-ALTH 101K-1-FA-CO	BHF-ALTH 101K-1-FA-CO	100	40	350	200	30	19	175	100 x 85	80 x 60	9	32
LHF-ALTH 101K-3-FA	BHF-ALTH 101K-3-FA	100	40	350	200	30	19	175	140 x 110	105 x 75–80	11	32
LHF-ALTH 101K-3-FA-CO	BHF-ALTH 101K-3-FA-CO	100	40	350	200	30	19	175	140 x 110	105 x 75–80	11	32
LHF-ALTH 125K-1-FA	BHF-ALTH 125K-1-FA	125	40	350	240	30	21	200	100 x 85	80 x 60	9	45
LHF-ALTH 125K-1-FA-CO	BHF-ALTH 125K-1-FA-CO	125	40	350	240	30	21	200	100 x 85	80 x 60	9	45
LHF-ALTH 125K-3-FA	BHF-ALTH 125K-3-FA	125	40	350	240	30	21	200	140 x 110	105 x 75–80	11	45
LHF-ALTH 125K-3-FA-CO	BHF-ALTH 125K-3-FA-CO	125	40	350	240	30	21	200	140 x 110	105 x 75–80	11	45
LHF-ALTH 160K	BHF-ALTH 160K	160	50	750	570	50	25	245	140 x 110	105 x 75–80	11	65
LHF-ALTH 160K-CO	BHF-ALTH 160K-CO	160	50	750	570	50	25	245	140 x 110	105 x 75–80	11	65
LHF-ALTH 200K	BHF-ALTH 200K	200	50	800	570	50	25	265	140 x 110	105 x 75–80	11	65
LHF-ALTH 200K-CO	BHF-ALTH 200K-CO	200	50	800	570	50	25	265	140 x 110	105 x 75–80	11	65

Versions / options



	version with extremely crowned tread	antistatic version, non-marking grey	with "Radstop" wheel brake
Technical description page	55	50	113
Product code suffix	-CO	-AS	-RA
Available for		all	upon request

LPFE-ALTH, BPFE-ALTH series

Heavy-duty castors with polyurethane torsion springs, wheel with Blickle Extrathane® polyurethane tread

350–500 kg

Bracket: LPFE/BPFE series

- solid welded steel construction, solid forged part, zinc-plated, yellow-passivated, Cr6-free
- patented woodruff key design for outstanding spring-damping properties

Swivel bracket:

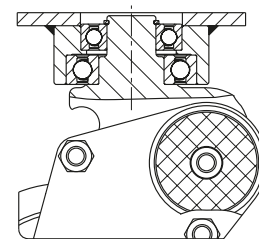
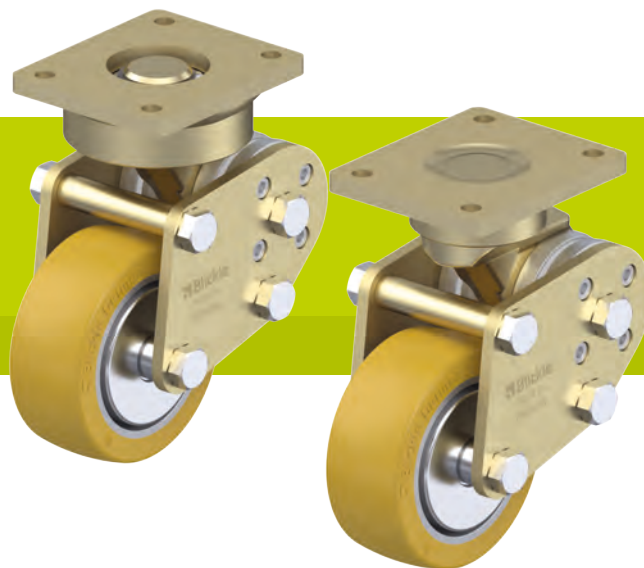
- one sealed lifetime lubricated grooved ball bearing in the swivel head (two for wheel Ø 125x50 mm or more)

Wheel: ALTH series

- tread: high-quality polyurethane elastomer Blickle Extrathane®, hardness 92 Shore A, colour light brown, non-marking, non-staining
- wheel centre: die-cast aluminium, colour silver grey

Additional details:

- bracket series: page 95
- wheel series: page 65
- bearing types: page 84–85



Swivel castors	Fixed castors	Wheel Ø [mm]	Wheel width [mm]	Load capacity [kg]	Spring tension [kg]	Initial tension [kg]	Spring travel [mm]	Total height [mm]	Plate size [mm]	Bolt hole spacing [mm]	Bolt hole Ø [mm]	Offset swivel castor [mm]
LPFE-ALTH 101K-FA	BPFE-ALTH 101K-FA	100	40	350	330	40	16	170	100 x 85	80 x 60	9	38
LPFE-ALTH 101K-FA-CO	BPFE-ALTH 101K-FA-CO	100	40	350	330	40	16	170	100 x 85	80 x 60	9	38
LPFE-ALTH 125K-FA	BPFE-ALTH 125K-FA	125	40	350	290	40	18	192	100 x 85	80 x 60	9	45
LPFE-ALTH 125K-FA-CO	BPFE-ALTH 125K-FA-CO	125	40	350	290	40	18	192	100 x 85	80 x 60	9	45
LPFE-ALTH 127K	BPFE-ALTH 127K	125	54	450	500	40	25	225	140 x 110	105 x 75–80	11	61
LPFE-ALTH 150K	BPFE-ALTH 150K	150	50	500	500	40	25	255	140 x 110	105 x 75–80	11	61

11

Versions / options



	version with extremely crowned tread	antistatic version, non-marking grey	with stem
Technical description page	55	50	104
Product code suffix	-CO	-AS	-ZA
Available for		all	upon request

LSFN-GTH, BSFN-GTH series

Welded steel heavy-duty castors with steel spring, wheel with Blickle Extrathane® polyurethane tread

800–2,400 kg

Bracket: LSFN/BSFN series

- particularly robust welded steel construction, zinc-plated, yellow-passivated, Cr6-free
- robust spring structure with steel spring
- maintenance-free spring mechanism

Swivel bracket:

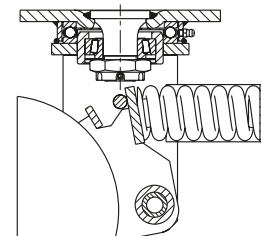
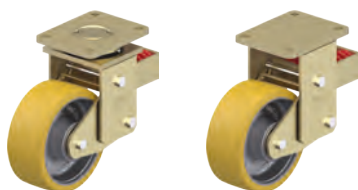
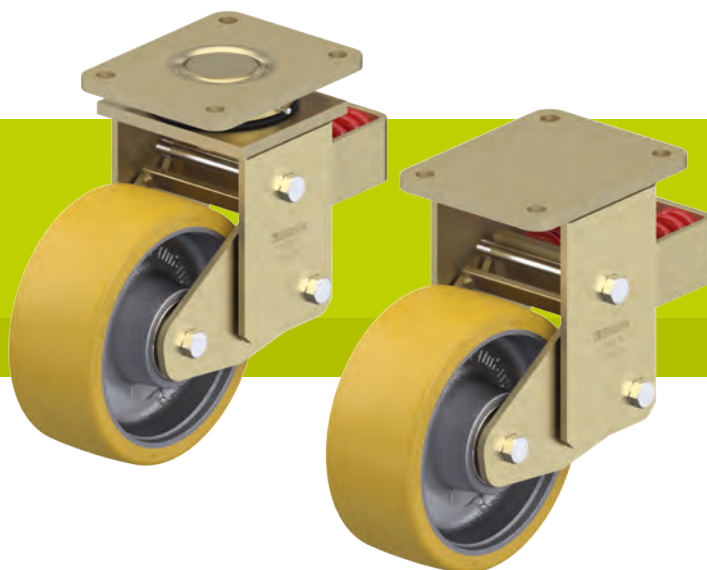
- axial grooved ball bearing ISO 104 and tapered roller bearing ISO 355 in the swivel head
- bolted and secured welded central kingpin, extremely strong
- dust and splash-proof
- grease nipple

Wheel: GTH series

- tread: high-quality polyurethane elastomer Blickle Extrathane®, hardness 92 Shore A, colour light brown, non-marking, non-staining
- wheel centre: rugged grey cast iron, with grease nipple, lacquered, colour silver

Additional details:

- bracket series: page 95
- wheel series: page 66
- bearing types: page 84–85



Swivel castors	Fixed castors	Wheel Ø [mm]	Wheel width [mm]	Load capacity [kg]	Spring tension [kg]	Initial tension [kg]	Spring travel [mm]	Total height [mm]	Plate size [mm]	Bolt hole spacing [mm]	Bolt hole Ø [mm]	Offset swivel castor [mm]
LSFN-GTH 160K	BSFN-GTH 160K	160	50	800	570	75	25	245	140 x 110	105 x 75–80	11	100
LSFN-GTH 200K	BSFN-GTH 200K	200	50	1,000	570	75	25	265	140 x 110	105 x 75–80	11	100
LSFN-GTH 202K	BSFN-GTH 202K	200	80	1,600	750	100	25	275	175 x 140	140 x 105	14	100
LSFN-GTH 250K	BSFN-GTH 250K	250	60	1,500	750	100	25	315	175 x 140	140 x 105	14	120
LSFN-GTH 252K	BSFN-GTH 252K	250	80	2,200	1,000	150	45	370	200 x 160	160 x 120	14	120
LSFN-GTH 252K-F30	BSFN-GTH 252K-F30	250	80	2,200	1,500	150	30	370	200 x 160	160 x 120	14	120
LSFN-GTH 302K	BSFN-GTH 302K	300	80	2,400	1,000	150	45	395	200 x 160	160 x 120	14	120
LSFN-GTH 302K-F30	BSFN-GTH 302K-F30	300	80	2,400	1,500	150	30	395	200 x 160	160 x 120	14	120

Version F30 with shortened spring travel

Versions / options



	antistatic version, non-marking grey	with "Radstop" wheel brake	with directional lock
Technical description page	50	113	115
Product code suffix	-AS	-RA	
Available for	upon request	upon request	upon request

LSFE-GTH, BSFE-GTH series

Welded steel heavy-duty castors with polyurethane spring, wheel with Blickle Extrathane® polyurethane tread

800–1,800 kg

Bracket: LSFE/BSFE series

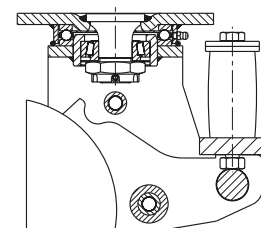
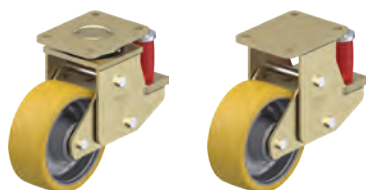
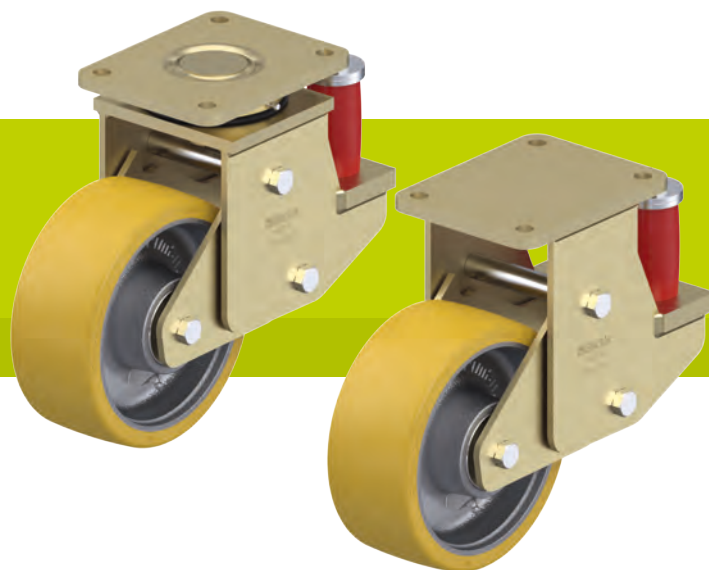
- particularly robust welded steel construction, zinc-plated, yellow-passivated, Cr6-free
- elastomer spring for excellent damping properties
- maintenance-free spring mechanism
- swivel bracket:
 - axial grooved ball bearing ISO 104 and tapered roller bearing ISO 355 in the swivel head
 - bolted and secured welded central kingpin, extremely strong
 - dust and splash-proof
 - grease nipple

Wheel: GTH series

- tread: high-quality polyurethane elastomer Blickle Extrathane®, hardness 92 Shore A, colour light brown, non-marking, non-staining
- wheel centre: rugged grey cast iron, with grease nipple, lacquered, colour silver

Additional details:

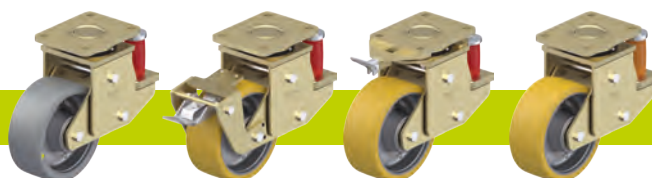
- bracket series: page 95
- wheel series: page 66
- bearing types: page 84–85



Swivel castors	Fixed castors	Wheel Ø [mm]	Wheel width [mm]	Load capacity [kg]	Spring tension [kg]	Initial tension [kg]	Spring travel [mm]	Total height [mm]	Plate size [mm]	Bolt hole spacing [mm]	Bolt hole Ø [mm]	Offset swivel castor [mm]
LSFE-GTH 160K	BSFE-GTH 160K	160	50	800	500	50	25	245	140 x 110	105 x 75–80	11	100
LSFE-GTH 200K	BSFE-GTH 200K	200	50	1,000	500	50	25	265	140 x 110	105 x 75–80	11	100
LSFE-GTH 202K	BSFE-GTH 202K	200	80	1,600	850	150	25	275	175 x 140	140 x 105	14	100
LSFE-GTH 250K	BSFE-GTH 250K	250	60	1,500	850	150	25	315	175 x 140	140 x 105	14	120
LSFE-GTH 252K	BSFE-GTH 252K	250	80	1,800	1,200	200	25	315	200 x 160	160 x 120	14	120

11

Versions / options



	antistatic version, non-marking grey	with "Radstop" wheel brake	with directional lock	different spring tension
Technical description page	50	113	115	
Product code suffix	-AS	-RA		
Available for	upon request	upon request	upon request	upon request

LSFN-GB, BSFN-GB series

Welded steel heavy-duty castors with steel spring, wheel with Blickle Besthane® polyurethane tread

800–2,400 kg

Bracket: LSFN/BSFN series

- particularly robust welded steel construction, zinc-plated, yellow-passivated, Cr6-free
- robust spring structure with steel spring
- maintenance-free spring mechanism

Swivel bracket:

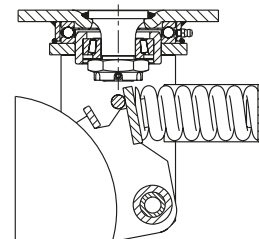
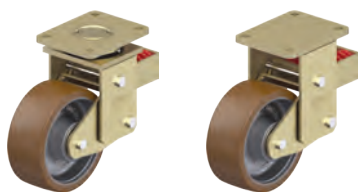
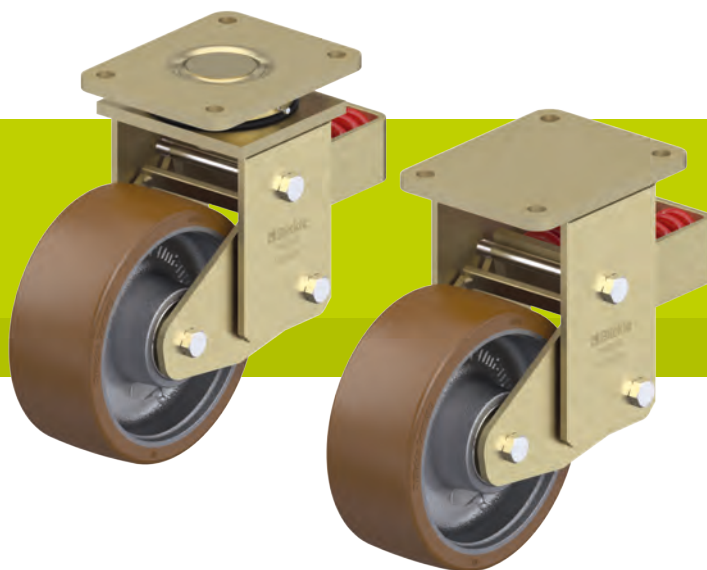
- axial grooved ball bearing ISO 104 and tapered roller bearing ISO 355 in the swivel head
- bolted and secured welded central kingpin, extremely strong
- dust and splash-proof
- grease nipple

Wheel: GB series

- tread: high-quality polyurethane elastomer Blickle Besthane®, hardness 92 Shore A, colour brown, non-marking, non-staining
- wheel centre: rugged grey cast iron, with grease nipple, lacquered, colour silver

Additional details:

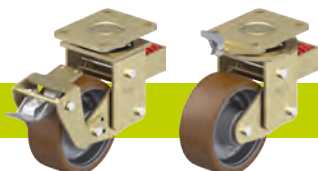
- bracket series: page 95
- wheel series: page 67
- bearing types: page 84–85



Swivel castors	Fixed castors	Wheel Ø [mm]	Wheel width [mm]	Load capacity [kg]	Spring tension [kg]	Initial tension [kg]	Spring travel [mm]	Total height [mm]	Plate size [mm]	Bolt hole spacing [mm]	Bolt hole Ø [mm]	Offset swivel castor [mm]
LSFN-GB 160K	BSFN-GB 160K	160	50	800	570	75	25	245	140 x 110	105 x 75–80	11	100
LSFN-GB 200K	BSFN-GB 200K	200	50	1,000	570	75	25	265	140 x 110	105 x 75–80	11	100
LSFN-GB 202K	BSFN-GB 202K	200	80	1,600	750	100	25	275	175 x 140	140 x 105	14	100
LSFN-GB 250K	BSFN-GB 250K	250	60	1,500	750	100	25	315	175 x 140	140 x 105	14	120
LSFN-GB 252K	BSFN-GB 252K	250	80	2,200	1,000	150	45	370	200 x 160	160 x 120	14	120
LSFN-GB 252K-F30	BSFN-GB 252K-F30	250	80	2,200	1,500	150	30	370	200 x 160	160 x 120	14	120
LSFN-GB 302K	BSFN-GB 302K	300	80	2,400	1,000	150	45	395	200 x 160	160 x 120	14	120
LSFN-GB 302K-F30	BSFN-GB 302K-F30	300	80	2,400	1,500	150	30	395	200 x 160	160 x 120	14	120

Version F30 with shortened spring travel

Versions / options



	with "Radstop" wheel brake	with directional lock
Technical description page	113	115
Product code suffix	-RA	
Available for	upon request	upon request

LSFE-GB, BSFE-GB series

Welded steel heavy-duty castors with polyurethane spring, wheel with Blickle Besthane® polyurethane tread

800–1,800 kg

Bracket: LSFE/BSFE series

- particularly robust welded steel construction, zinc-plated, yellow-passivated, Cr6-free
- elastomer spring for excellent damping properties
- maintenance-free spring mechanism

Swivel bracket:

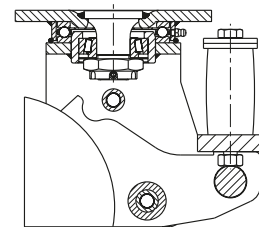
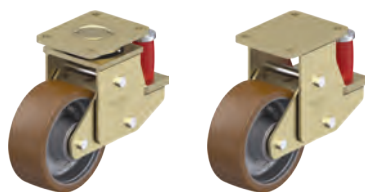
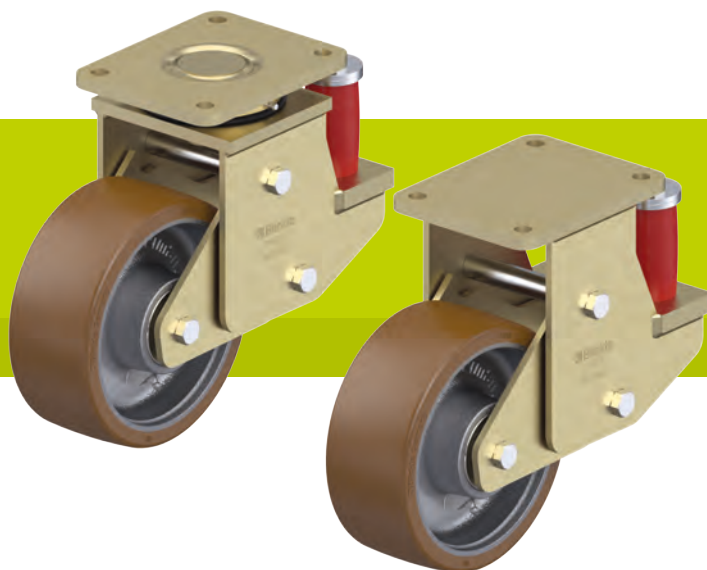
- axial grooved ball bearing ISO 104 and tapered roller bearing ISO 355 in the swivel head
- bolted and secured welded central kingpin, extremely strong
- dust and splash-proof
- grease nipple

Wheel: GB series

- tread: high-quality polyurethane elastomer Blickle Besthane®, hardness 92 Shore A, colour brown, non-marking, non-staining
- wheel centre: rugged grey cast iron, with grease nipple, lacquered, colour silver

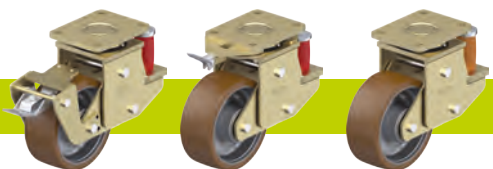
Additional details:

- bracket series: page 95
- wheel series: page 67
- bearing types: page 84–85



Swivel castors	Fixed castors	Wheel Ø [mm]	Wheel width [mm]	Load capacity [kg]	Spring tension [kg]	Initial tension [kg]	Spring travel [mm]	Total height [mm]	Plate size [mm]	Bolt hole spacing [mm]	Bolt hole Ø [mm]	Offset swivel castor [mm]
LSFE-GB 160K	BSFE-GB 160K	160	50	800	500	50	25	245	140 x 110	105 x 75–80	11	100
LSFE-GB 200K	BSFE-GB 200K	200	50	1,000	500	50	25	265	140 x 110	105 x 75–80	11	100
LSFE-GB 202K	BSFE-GB 202K	200	80	1,600	850	150	25	275	175 x 140	140 x 105	14	100
LSFE-GB 250K	BSFE-GB 250K	250	60	1,500	850	150	25	315	175 x 140	140 x 105	14	120
LSFE-GB 252K	BSFE-GB 252K	250	80	1,800	1,200	200	25	315	200 x 160	160 x 120	14	120

Versions / options



	with "Radstop" wheel brake	with directional lock	different spring tension
Technical description page	113	115	
Product code suffix	-RA		
Available for	upon request	upon request	upon request